

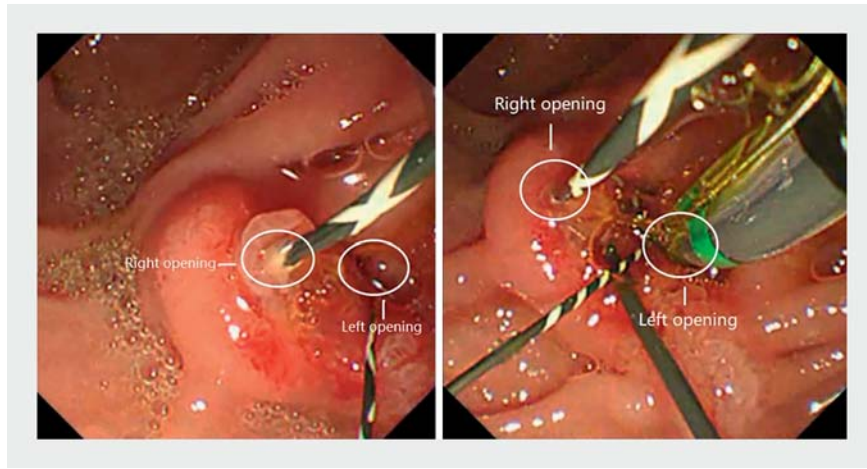
Diagnostic challenge: Mirizzi syndrome with anomalous pancreaticobiliary junction



► **Fig. 1** Magnetic resonance cholangiopancreatography showing one bile duct structure on the left side of the distal common bile duct, but the two were not connected. Gallstones appeared to be shown in both bile ducts (arrow).

A 35-year-old man was admitted to our hospital with abdominal pain after eating. A double bile duct structure was revealed by magnetic resonance cholangiopancreatography. The relationship and alignment of the double bile ducts appeared to be poorly represented (► **Fig. 1**). Endoscopic retrograde cholangiopancreatography (ERCP) was performed, and showed two separate openings in the zone of the major duodenal papilla (► **Fig. 2**, ► **Video 1**). The cholangiogram revealed that the patient had two common bile ducts (CBDs) that converged in the middle section of the bile duct, and the stones were disclosed in both ducts. Meanwhile, the pancreatic duct converged into the left CBD (► **Fig. 3**). We diagnosed type II double common bile duct (DCBD) [1] with anomalous pancreaticobiliary junction (APBJ) and cholelithiasis (► **Fig. 4 a**).

The patient underwent laparoscopic Roux-en-Y hepaticojejunostomy due to the risk of cholangiocarcinoma. Interestingly, we discovered during the operation



► **Fig. 2** Endoscopic views showing two separate openings in the zone of the papilla. The guidewire could enter from one opening and pass through the other opening.

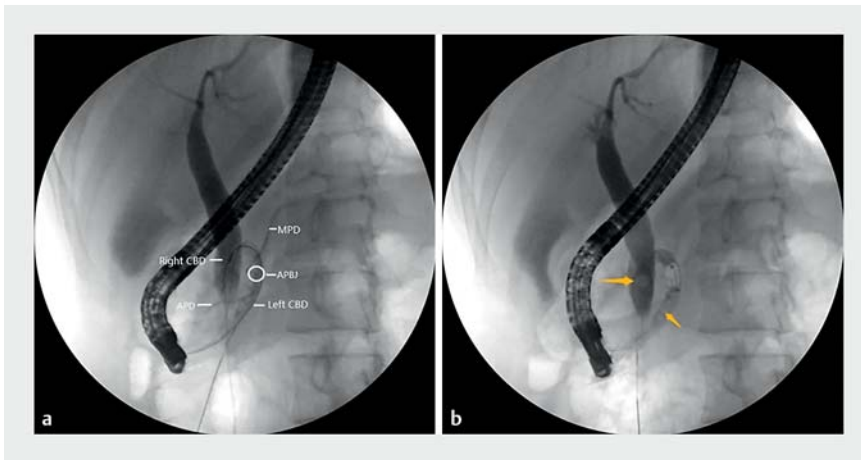


► **Video 1** A rare case: Mirizzi syndrome with anomalous pancreaticobiliary junction.

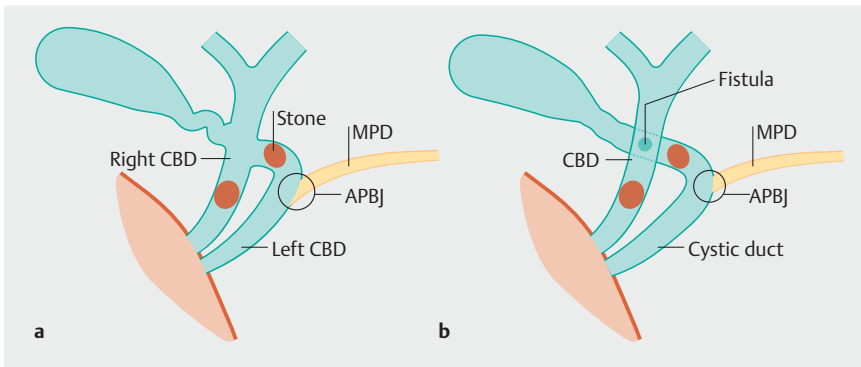
that the left CBD shown by the cholangiogram was in fact the cystic duct (► **Fig. 5**, ► **Video 1**). This indicated that the cystic duct formed a fistula with the CBD, and the pancreatic duct met the cystic duct. This suggested a deviation in our initial diagnosis. Based on the information above, we concluded that the cystic duct around the CBD on the left drained independently into the duo-

denum while forming a fistula with the duct in the middle. In fact, the cystic duct was where the pancreatic duct converged. The patient was eventually diagnosed with type II Mirizzi syndrome [2] in conjunction with a specific type of APBJ (► **Fig. 4 b**).

Both Mirizzi syndrome and DCBD are rare diseases of the biliary system, and ERCP is the current gold standard for diagnos-



► **Fig. 3** Endoscopic retrograde cholangiopancreatography (ERCP) showing double common bile duct (CBD). **a** Two CBDs converged in the middle section of the bile duct; the guidewire could be passed from the right CBD into the left CBD and vice versa, and the pancreatic duct converged into the left CBD. **b** Gallstones were revealed in both CBDs (arrow). APB, anomalous pancreaticobiliary junction; MPD, main pancreatic duct; APD, accessory pancreatic duct.



► **Fig. 4** Schema based on endoscopic retrograde cholangiopancreatography (ERCP). **a** The double common bile duct. **b** The final diagram of Mirizzi syndrome based on laparoscopic operation and ERCP. APB, anomalous pancreaticobiliary junction; CBD, common bile duct; MPD, main pancreatic duct.

ing them [1, 3]. However, this is the first report of Mirizzi syndrome in conjunction with APB that challenged our initial diagnosis; maybe choledochoscopy can make up for the lack of diagnosis [4, 5].

Endoscopy_UCTN_Code_TTT_1AR_2AB

Funding

Natural Science Foundation of Hebei Province
<http://dx.doi.org/10.13039/501100003787>
 H2020206514

Competing interests

The authors declare that they have no conflict of interest.

The authors

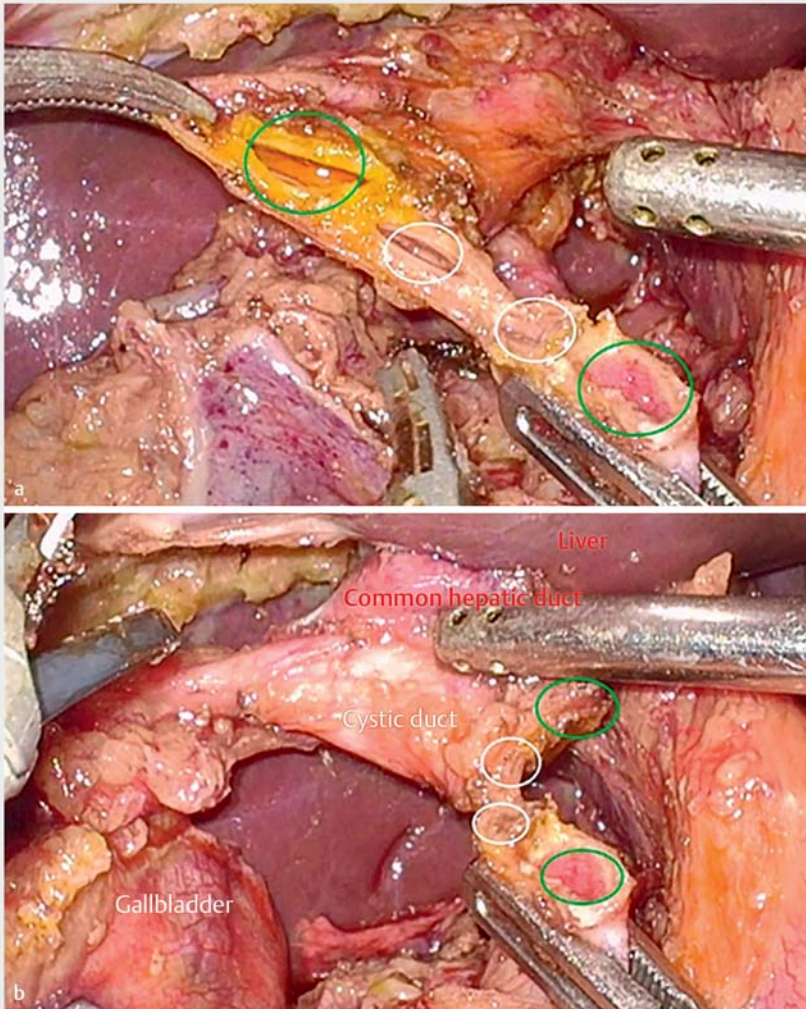
Tingting Yu, Yaoting Li, Suning Hou, Lichao Zhang, Jiao Tian, Senlin Hou
 Department of Biliopancreatic Endoscopic Surgery, The Second Hospital of Hebei Medical University, Shijiazhuang, P.R. China

Corresponding author

Senlin Hou, MD
 Department of Biliopancreatic Endoscopic Surgery, The Second Hospital of Hebei Medical University, Shijiazhuang, Hebei Province, P.R. China
 tinge2019@126.com

References

- [1] Kollı S, Etienne D, Reddy M et al. A review of double common bile duct and its sequelae. *Gastroenterology Res* 2018; 11: 1–4
- [2] Valderrama-Treviño AI, Granados-Romero JJ, Espejel-Deloiza M et al. Updates in Mirizzi syndrome. *Hepatobiliary Surg Nutr* 2017; 6: 170–178
- [3] Shirah BH, Shirah HA, Albeladi KB. Mirizzi syndrome: necessity for safe approach in dealing with diagnostic and treatment challenges. *Ann Hepatobiliary Pancreat Surg* 2017; 21: 122–130
- [4] Kim DC, Moon JH, Choi HJ et al. Successful endoscopic treatment for Mirizzi syndrome type II under direct peroral cholangioscopy using an ultraslim upper endoscope. *Endoscopy* 2014; 46: E103–E104
- [5] Miura S, Hamada S, Kume K et al. A case of double common bile duct visually detected only by cholangioscope. *Endoscopy* 2021; 53: E457–E458



► **Fig. 5** Laparoscopic operation findings. **a** A right channel (green circle) with bile and a left channel (white circle) with colorless fluid could be clearly seen after cutting the common bile duct. **b** The left channel extended into the gallbladder and the right channel extended into the liver.

Bibliography

Endoscopy 2022; 54: E974–E976

DOI 10.1055/a-1882-5137

ISSN 0013-726X

published online 29.7.2022

© 2022. The Author(s).

This is an open access article published by Thieme under the terms of the Creative Commons Attribution-NonDerivative-NonCommercial License, permitting copying and reproduction so long as the original work is given appropriate credit. Contents may not be used for commercial purposes, or adapted, remixed, transformed or built upon. (<https://creativecommons.org/licenses/by-nc-nd/4.0/>)

Georg Thieme Verlag KG, Rüdigerstraße 14,
70469 Stuttgart, Germany



ENDOSCOPY E-VIDEOS

<https://eref.thieme.de/e-videos>



Endoscopy E-Videos is an open access online section, reporting on interesting cases and new techniques in gastroenterological endoscopy. All papers include a high quality video and all contributions are freely accessible online. Processing charges apply (currently EUR 375), discounts and waivers acc. to HINARI are available.

This section has its own submission website at

<https://mc.manuscriptcentral.com/e-videos>