

Single-operator cholangioscopy in a patient with prior pancreaticoduodenectomy



A 64-year-old woman with a history of Gardner syndrome requiring classic pancreaticoduodenectomy for an ampullary adenoma 10 years prior presents for follow-up of adenomatous tissue at the hepaticojejunal anastomosis (▶ **Fig. 1**) with an intraductal extension of adenomatous tissue (▶ **Fig. 2**). She previously underwent endoscopic mucosal resection (EMR) of the adenomatous tissue and intraductal radiofrequency ablation (RFA) (▶ **Fig. 3**). After EMR and RFA, the patient developed a stricture at the hepaticojejunal anastomosis. Subsequently, stricture dilations at the anastomosis were performed. The decision was made to perform cholangioscopy to evaluate for intraductal extension of adenomatous tissue (▶ **Video 1**). A modified therapeutic upper endoscope (1T; GIF-1TH190 Olympus, Center Valley, Pennsylvania, United States) was used and advanced to the anastomosis. Cholangioscopy showed intraductal extension of adenomatous tissue. Cholangioscopy-directed biopsies were obtained. Pathology revealed tubular adenoma without high grade dysplasia. Repeat intraductal RFA is planned.

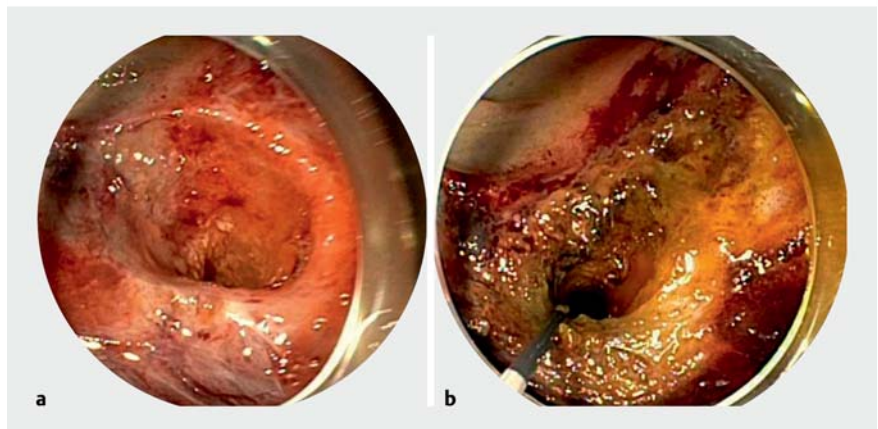
Cholangioscopy can be challenging in patients with prior pancreaticoduodenectomy. Various types of endoscopes are used for endoscopic retrograde cholangiopancreatography (ERCP) in patients with prior pancreaticoduodenectomy. These include adult and pediatric colonoscopes and balloon enteroscopy-assisted ERCP. However, cholangioscopy is not possible with these endoscopes owing to the length or width of their accessory channel. While the hepaticojejunal anastomosis can be reached with an adult upper endoscope, the cholangioscope is not compatible with the diameter of the endoscope accessory channel. In most patients with pancreaticoduodenectomy who need a single-operator cholangioscopy,



▶ **Fig. 1** Adenomatous tissue at the hepaticojejunal anastomosis.



▶ **Fig. 2** Intraductal extension of adenomatous tissue.



▶ **Fig. 3** **a** Circumferential endoscopic mucosal resection of adenomatous tissue. **b** Intraductal radiofrequency ablation of adenomatous tissue.

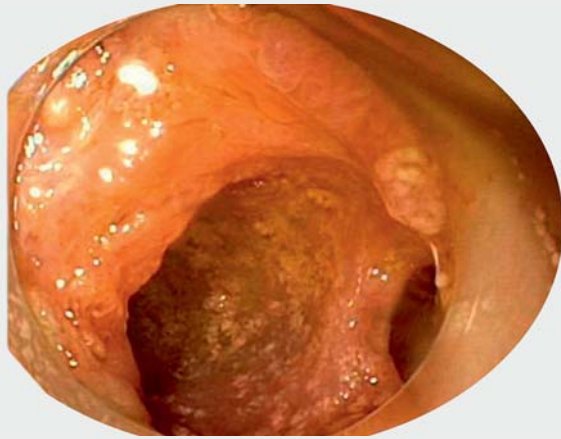
the most common approach is through a percutaneous biliary drain placed by interventional radiology prior to endoscopy. The modified therapeutic upper endoscope (1T) offers a working length of 103 cm, channel size of 3.7 cm, and accommodates almost all accessories as a conventional side-viewing duodenoscope, hence allowing for the passage of the cholangioscope [1]. Our case highlights that modified therapeutic upper endoscopy (1T) allows for cholangioscopy

to be performed in patients with pancreaticoduodenectomy when the hepaticojejunal anastomosis can be reached.

Endoscopy_UCTN_Code_CCL_1AZ_2AK

Competing interests

The authors declare that they have no conflict of interest.



Video 1 Single-operator cholangioscopy in a patient with prior pancreaticoduodenectomy.

Bibliography

Endoscopy 2023; 55: E74–E75

DOI 10.1055/a-1929-9094

ISSN 0013-726X

published online 30.9.2022

© 2022. The Author(s).

This is an open access article published by Thieme under the terms of the Creative Commons Attribution-NonDerivative-NonCommercial License, permitting copying and reproduction so long as the original work is given appropriate credit. Contents may not be used for commercial purposes, or adapted, remixed, transformed or built upon. (<https://creativecommons.org/licenses/by-nc-nd/4.0/>)

Georg Thieme Verlag KG, Rüdigerstraße 14, 70469 Stuttgart, Germany



ENDOSCOPY E-VIDEOS

<https://eref.thieme.de/e-videos>



Endoscopy E-Videos is an open access online section, reporting on interesting cases and new techniques in gastroenterological endoscopy. All papers include a high quality video and all contributions are freely accessible online. Processing charges apply (currently EUR 375), discounts and waivers acc. to HINARI are available.

This section has its own submission website at <https://mc.manuscriptcentral.com/e-videos>

The authors

Michelle Baliss¹, **Nicholas McDonald²**,
Mohamed Abdallah², **Mohammad Bilal³**

- 1 Saint Louis University, Department of Medicine, Division of Gastroenterology and Hepatology, Saint Louis, Missouri, USA
- 2 University of Minnesota, Department of Medicine, Division of Gastroenterology, Hepatology, and Nutrition, Minneapolis, Minnesota, USA
- 3 Minneapolis VA Medical Center, Department of Medicine, Division of Gastroenterology, Minneapolis, Minnesota, USA

Corresponding author

Michelle Baliss, MD

SLUCare Academic Pavilion, Second Floor,
1008 South Spring Avenue, St. Louis, MO
63110, USA

Fax: +1-314-977-1660

msbaliss@gmail.com

Reference

- [1] McDonald N, Abdallah M, Sunjaya D et al. Use of modified therapeutic upper endoscope for ERCP in patients post pancreaticoduodenectomy. *Endosc Int Open* 2022; 10: E905–E909