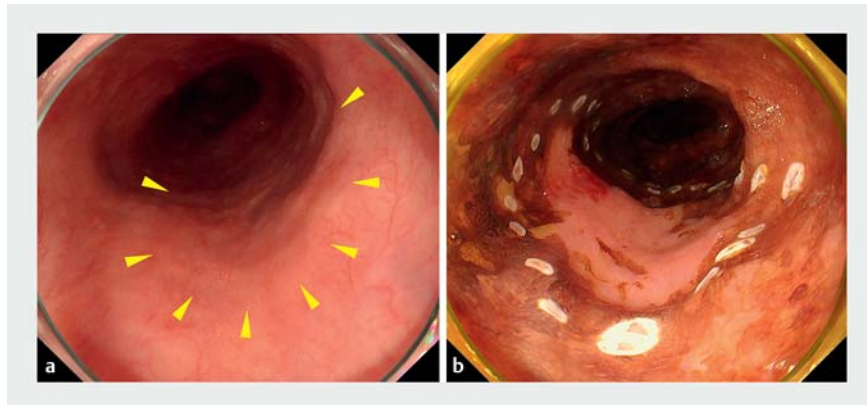


Additional irrigation tube with therapeutic endoscope to aid gel immersion endoscopic submucosal dissection

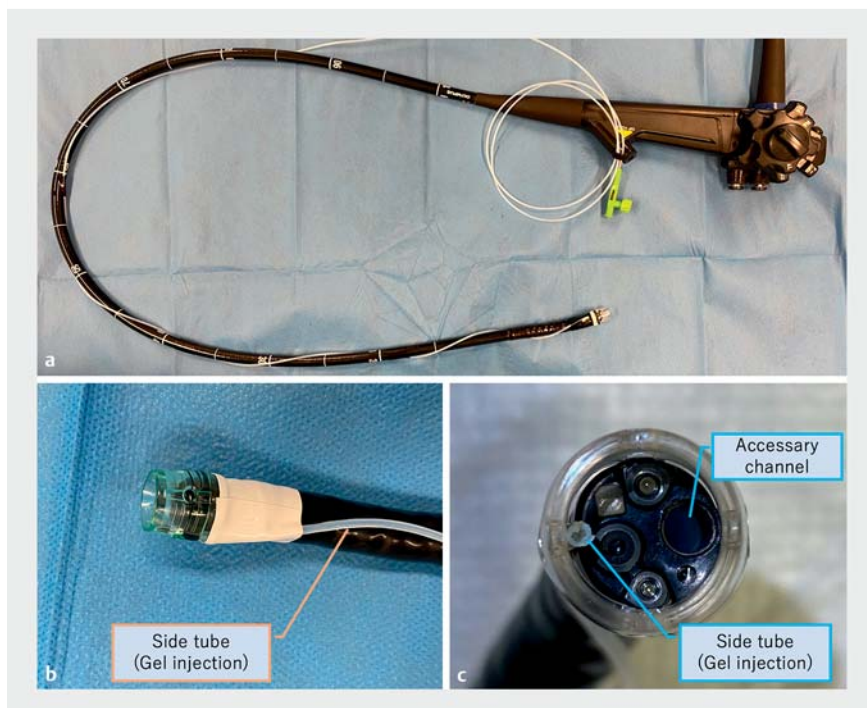
OPEN
ACCESS

Gel immersion endoscopy has several advantages including low pressure (to prevent patient discomfort) [1], easy implementation of hemostasis with clear visibility of the bleeding point [2,3], a clear visual field, and the buoyancy effect during endoscopic submucosal dissection (ESD) [4,5]. However, gel immersion endoscopy requires a specific device, the BioShield irrigator (US Endoscopy, Mentor, Ohio, USA) [4,5], which combines the gel supply, device insertion, and aspiration line into one accessory channel. This arrangement interferes with the gel or the air during insertion and removal of endoscopic devices, and wastes gel in the channel collected by aspiration. To overcome these disadvantages, we developed a novel technique using a scope fitted with an easily available tube for gel supply, and we achieved successful esophageal ESD with it.

A man in his 70s had a superficial esophageal squamous cell carcinoma, 28 mm in size (► Fig. 1). The lesion was located on the left-side wall of the middle thoracic esophagus, where water accumulates due to gravity. We decided to perform gel immersion ESD to secure a clear field. A general catheter for endoscopic retrograde cholangiopancreatography was prepared along with the scope (GIF-H290T; Olympus, Medical Systems Corp., Tokyo, Japan) to supply the gel products (Viscoseal gel; Otsuka Pharmaceutical Factory, Tokushima, Japan) (► Fig. 2, ► Video 1), which allowed us to supply the gel independently without wasting any of it. Air bubbles caused by thermal effects with an endoknife sometimes decreased visibility. Placing the tube tip on the opposite side of the accessory channel allowed air bubbles at the side of the tube not accessible via the accessory channel to be cleaned out by the pressure of the injected gel. Eventually, curative resection was achieved by gel immersion ESD without complications (► Fig. 3, ► Fig. 4).



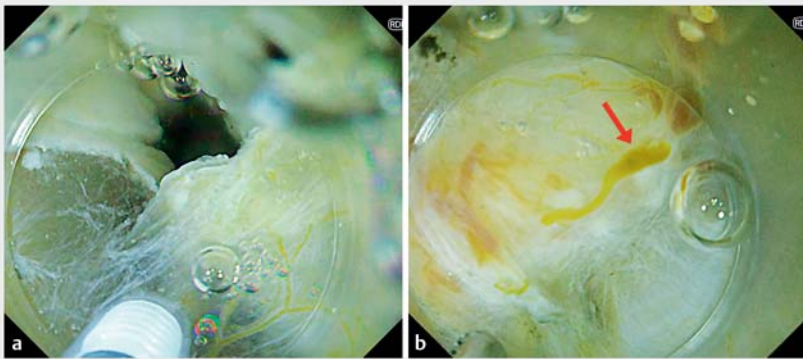
► **Fig. 1** Endoscopic images of a superficial esophageal squamous cell carcinoma, 28 mm in size, located on the left-side wall of the middle thoracic esophagus. **a** White-light imaging; **b** Lugol's iodine staining.



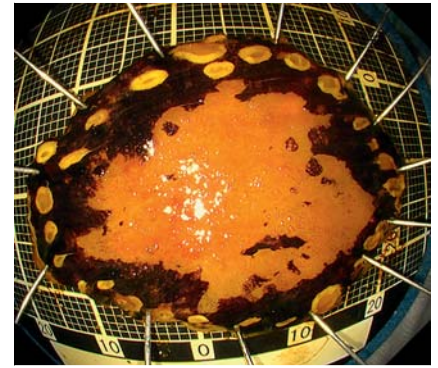
► **Fig. 2** **a** A therapeutic endoscope has a catheter for endoscopic retrograde cholangiopancreatography attached to inject the gel independently, without using an accessory channel of the scope. **b** The endoscope and the tube are attached with adhesive tapes, and their tips are attached with a transparent hood. **c** By placing the tube tip on the opposite side to the accessory channel, air bubbles at the side of the tube that cannot be reached by the accessory channel are cleaned out by the pressure of the injected gel.



▶ **Video 1** Gel immersion endoscopic submucosal dissection for a superficial esophageal cancer using a therapeutic endoscope with an additional irrigation tube attached for gel supply.



▶ **Fig. 3** Endoscopic images of esophageal endoscopic submucosal dissection (ESD) using the gel immersion technique in dual red imaging mode. The gel supply makes the visual field clear during esophageal ESD. **a** Gel immersion can make the lesion clearer and helps with the dissection. **b** It also makes the bleeding point (red arrow) clearly visible.



▶ **Fig. 4** Macroscopic image of the resected specimen of a superficial esophageal squamous cell carcinoma. Curative resection was achieved by ESD using the gel immersion technique.

References

- [1] Yano K, Yano T, Nagayama M et al. Hemostasis of an actively bleeding lesion at the ileocecal valve by low-pressure endoscopy using the gel immersion technique. *Video-GIE* 2021; 6: 184–186
- [2] Yano T, Nemoto D, Ono K et al. Gel immersion endoscopy: a novel method to secure the visual field during endoscopy in bleeding patients (with videos). *Gastrointest Endosc* 2016; 83: 809–811
- [3] Yano T, Takezawa T, Hashimoto K et al. Gel immersion endoscopy: innovation in securing the visual field – clinical experience with 265 consecutive procedures. *Endosc Int Open* 2021; 9: E1123–E1127
- [4] Tashima T, Miyaguchi K, Terada R et al. Gel immersion endoscopic submucosal dissection using a novel gel product for a duodenal epithelial tumor. *Endoscopy* 2022; 54: E162–E163
- [5] Nakano Y, Tashima T, Jinushi R et al. Conversion from conventional esophageal endoscopic submucosal dissection to the gel immersion method. *Endosc Int Open* 2021; 9: E1756–E1757

Bibliography

Endoscopy 2023; 55: E64–E65
 DOI 10.1055/a-1930-6140
 ISSN 0013-726X
 published online 30.9.2022
 © 2022. The Author(s).

This is an open access article published by Thieme under the terms of the Creative Commons Attribution-NonDerivative-NonCommercial License, permitting copying and reproduction so long as the original work is given appropriate credit. Contents may not be used for commercial purposes, or adapted, remixed, transformed or built upon. (<https://creativecommons.org/licenses/by-nc-nd/4.0/>)

Georg Thieme Verlag KG, Rüdigerstraße 14, 70469 Stuttgart, Germany



An additional irrigation tube with a therapeutic endoscope may be helpful for gel immersion ESD.

Endoscopy_UCTN_Code_CPL_1AH_2AZ

Competing interests

The authors declare that they have no conflict of interest.

The authors

Taro Iwatsubo^{1,2}, Yosuke Mori¹, Shinya Abe², Akitoshi Hakoda¹, Noriaki Sugawara¹, Kazuhiro Ota^{1,2}, Toshihisa Takeuchi^{1,2}

- 1 Second Department of Internal Medicine, Osaka Medical and Pharmaceutical University Hospital, Osaka, Japan
- 2 Endoscopy Center, Osaka Medical and Pharmaceutical University Hospital, Osaka, Japan

Corresponding author

Taro Iwatsubo, MD

Endoscopic Center, Osaka Medical and Pharmaceutical University Hospital, 2-7, Daigakumachi Takatsuki, Osaka 569-8686, Japan
 iwatsubotarou@gmail.com