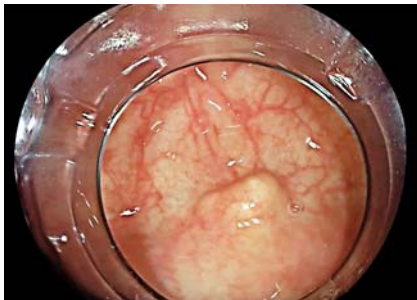


Diagnosis of an unexpected colonic submucosal lesion by double-clip traction endoscopic submucosal dissection

OPEN
ACCESS



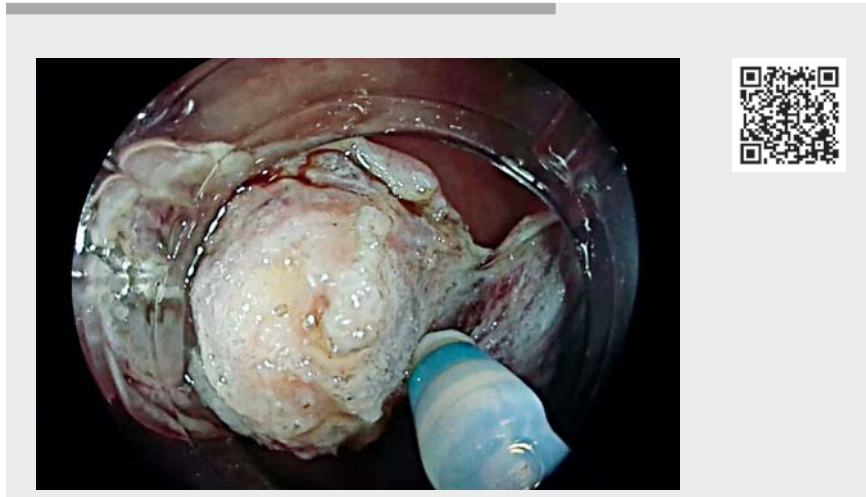
► **Fig. 1** Submucosal lesion in the right colon.



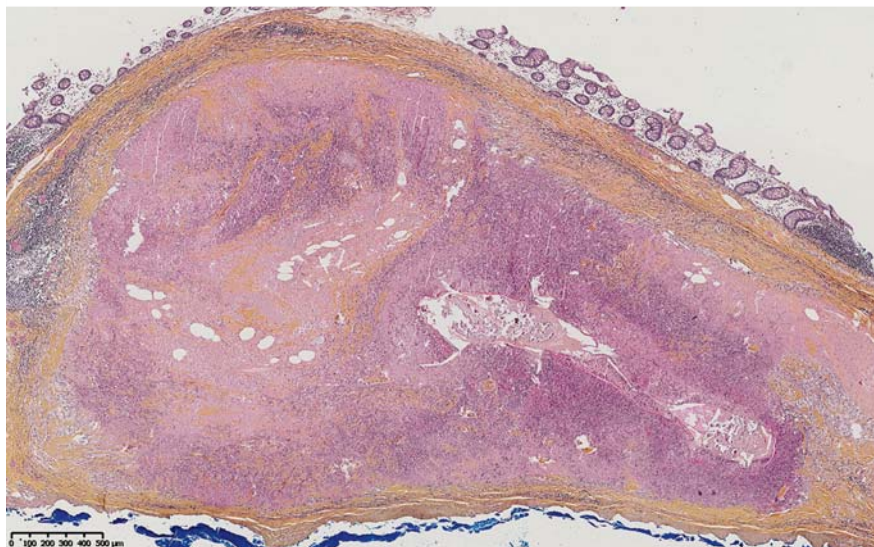
► **Fig. 2** Circumferential submucosal dissection.

Endoscopic submucosal dissection (ESD) is a reference method for the management of extensive lesions of the digestive tract. Its development extended the indications of ESD to lesions that were previously difficult to treat such as recurrences, lesions invading a diverticulum or the appendix, and submucosal lesions that may not be treatable by endoscopic mucosal resection [1, 2].

Colonic submucosal lesions are common, and their definitive diagnosis can be problematic. En bloc resection is essential in cases of submucosal tumors because of the potential for such to be carcinoid tumors or gastrointestinal stromal tumors (GISTs), and careful histological analysis is required [3, 4]. The submucosal nature of these lesions makes classic ESD challenging.



► **Video 1** Diagnosis of an unexpected colonic submucosal lesion by double-clip traction endoscopic submucosal dissection.

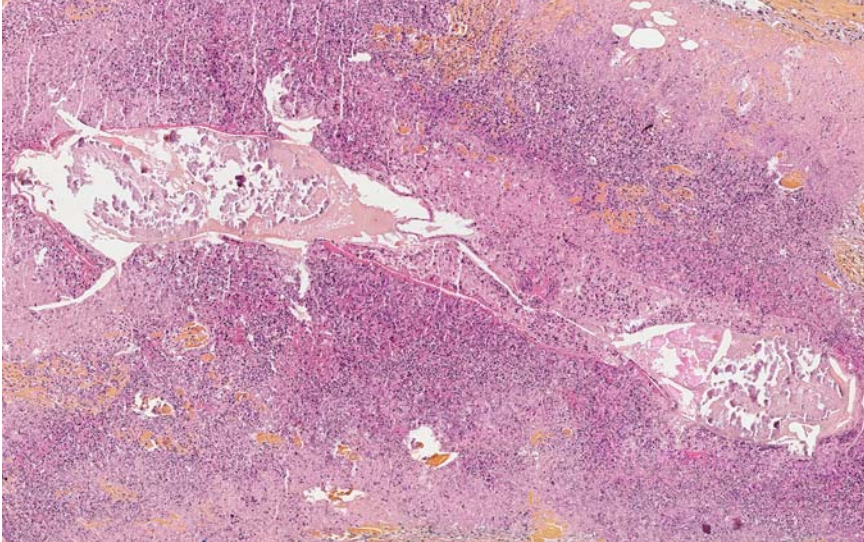


► **Fig. 3** Submucosal nematode.

We report here the case of a 75-year-old patient in whom a submucosal lesion in the right colon was detected during a screening colonoscopy (► **Fig. 1**). The submucosal lesion was <1 cm in diameter. Previous biopsies yielded ambiguous findings. We hypothesized that the pa-

tient had a GIST or carcinoid tumor, and so we performed resection by ESD to facilitate diagnosis and, potentially, be curative.

After injection and circumferential incision, traction using the double-clip traction method [5] was performed to en-



► **Fig. 4** Submucosal nematode (zoom).

sure complete resection (► **Fig. 2**). This method showed a small submucosal space immediately beneath a hard, whitish submucosal lesion (► **Video 1**). The patient was discharged the day after the resection and did not develop any complications. Histopathological analysis revealed an unexpected diagnosis of a submucosal nematode with an inflammatory reaction as a gigantocellular epithelioid granuloma with free lateral and deep margins (► **Fig. 3**, ► **Fig. 4**). This case demonstrates the complexity of management and the difficulty of histological prediction of colonic submucosal tumors, which range from digestive parasitosis to carcinoid tumor. ESD is a less invasive and efficient method of diagnosing and potentially treating patients with colonic submucosal tumors.

Endoscopy_UCTN_Code_CCL_1AD_2AJ

Competing Interest

The authors declare that they have no conflict of interest.

The authors

Jérémie Albouys¹, Sophie Geyl¹, Thomas Lambin², Romain Legros¹, Aurélie Charissoux³, Mathieu Pioche², Jérémie Jacques¹

- 1 Department of Endoscopy and Gastroenterology, Centre Hospitalier Universitaire Dupuytren, Limoges, France
- 2 Department of Endoscopy and Hepatogastroenterology, Pavillon L, Edouard Herriot Hospital, Lyon, France
- 3 Anatomopathology, Centre Hospitalier Universitaire Dupuytren, Limoges, France

Corresponding author

Jérémie Albouys, MD
 Department of Endoscopy and Gastroenterology, Centre Hospitalier Universitaire Dupuytren, 64 Boulevard Gambetta, 87000 Limoges, France
 Fax: +33 5 55 05 87 33
 jeremie.albouys@gmail.com

References

- [1] Lambin T, Yzet C, Albouys J et al. Endoscopic submucosal dissection of a subepithelial neuroendocrine tumor located in the duodenum using a countertraction technique. *Endoscopy* 2021. doi:10.1055/a-1492-2362
- [2] Albouys J, Geyl S, Guyot A et al. Endoscopic submucosal dissection with double-clip

traction for recurrent adenoma. *Endoscopy* 2020; 52: E439–E440. doi:10.1055/a-1158-8518

- [3] Liu Z, Sun Y, Li Y et al. Colonic gastrointestinal stromal tumor: a population-based analysis of incidence and survival. *Gastroenterol Res Pract* 2019; 2019: 3849850. doi:10.1155/2019/3849850
- [4] Kukar M, Kapil A, Papenfuss W et al. Gastrointestinal stromal tumors (GISTs) at uncommon locations: a large population based analysis. *J Surg Oncol* 2015; 111: 696–701. doi:10.1002/jso.23873
- [5] Bordillon P, Pioche M, Wallenhorst T et al. Double-clip traction for colonic endoscopic submucosal dissection: a multicenter study of 599 consecutive cases (with video). *Gastrointest Endosc* 2021; 94: 333–343. doi:10.1016/j.gie.2021.01.036

Bibliography

Endoscopy 2023; 55: E240–E241
 DOI 10.1055/a-1941-8301
 ISSN 0013-726X
 published online 21.11.2022
 © 2022. The Author(s).

This is an open access article published by Thieme under the terms of the Creative Commons Attribution-NonDerivative-NonCommercial License, permitting copying and reproduction so long as the original work is given appropriate credit. Contents may not be used for commercial purposes, or adapted, remixed, transformed or built upon. (<https://creativecommons.org/licenses/by-nc-nd/4.0/>)
 Georg Thieme Verlag KG, Rüdigerstraße 14, 70469 Stuttgart, Germany



ENDOSCOPY E-VIDEOS

<https://eref.thieme.de/e-videos>



Endoscopy E-Videos is an open access online section, reporting on interesting cases and new techniques in gastroenterological endoscopy. All papers include a high quality video and all contributions are freely accessible online. Processing charges apply (currently EUR 375), discounts and waivers acc. to HINARI are available.

This section has its own submission website at <https://mc.manuscriptcentral.com/e-videos>