

Endoscopic retrograde cholangiopancreatography performed through a temporary lumen-apposing metal stent in a patient with a benign gastric outlet obstruction



We report the case of an 87-year-old man who presented with acute cholangitis. At presentation, an abdominal computed tomography (CT) scan revealed choledocholithiasis with biliary dilation and homogenous thickening of the bile duct wall. He was admitted under antibiotics and a percutaneous cholecystos-



► **Fig. 1** Cholangiography revealing cholelithiasis and stones in the distal common bile duct.

tomy was performed. Cholangiography through the cholecystostomy (► **Fig. 1**) revealed a swollen gallbladder, cholelithiasis, and stones in the distal common bile duct (CBD) up to 8 mm. Given the patient's complaints and radiological findings, an endoscopic retrograde cholangiopancreatography (ERCP) was performed. During duodenoscopy an unexpected peptic stricture was observed at the duodenal bulb, preventing advancement of the duodenoscope into the duodenum (► **Fig. 2a**). The patient underwent balloon dilation up to 12 mm and started proton pump inhibitor (PPI) therapy. However, 2 weeks later the stricture was still not transposable by the duodenoscope (► **Fig. 2b**). To perform ERCP, a temporary 15-mm × 10-mm lumen-apposing metal stent (LAMS) (AXIOS; Boston Scientific, Marlborough, Massachusetts, USA) was deployed under endoscopic/ fluoroscopic control to access the papilla (► **Video 1**).

One week later, the lumen was widened enough to allow passage of the duodenoscope (► **Fig. 2c**) and ERCP was performed. After a needle-knife fistulotomy for biliary access, the cholangiogram

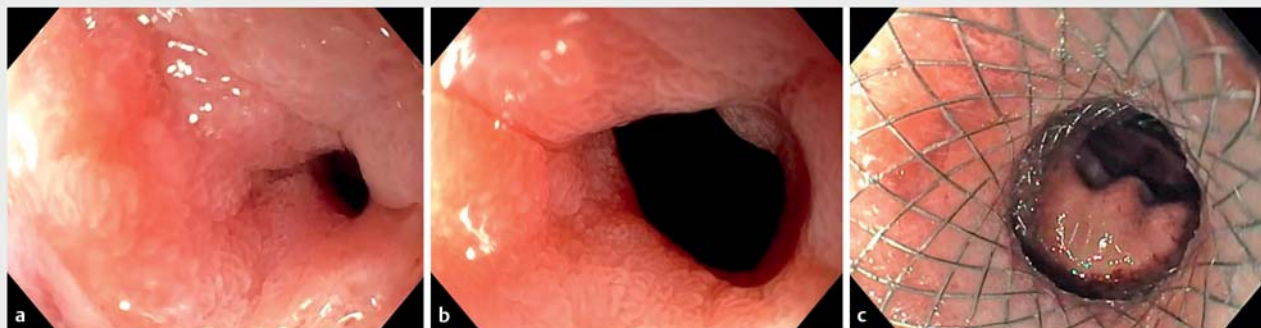
revealed two 10-mm stones in the distal CBD (► **Fig. 3**) that were removed using an extraction balloon. The patient recovered uneventfully and was discharged the following day.

Combined benign obstruction of the bile duct and duodenum is a rare finding. Gastric outlet obstruction due to peptic stenosis is seldom observed since the PPIs and *Helicobacter pylori* treatment era. Traditionally, treatment of benign short gastrointestinal strictures involves endoscopic balloon dilation, steroid injection, or incisional therapy; conventional fully-covered metal stents may be an option in refractory long strictures [1, 2]. Although initially designed to drain pancreatic collections, LAMS are effective, versatile, and safe for treatment of a benign stenosis of less than 10 mm [3, 4].

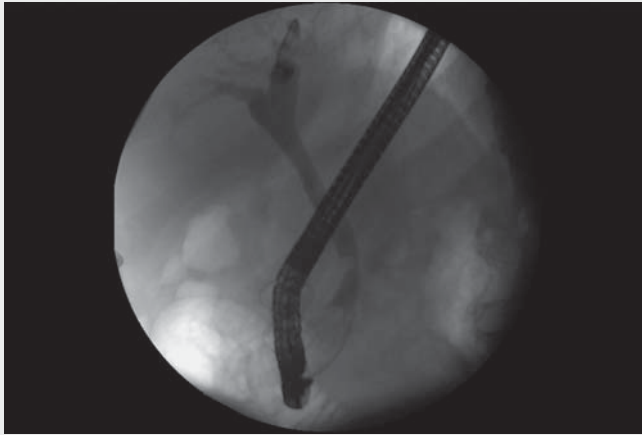
Endoscopy_UCTN_Code_TTT_1AR_2AG

Competing Interest

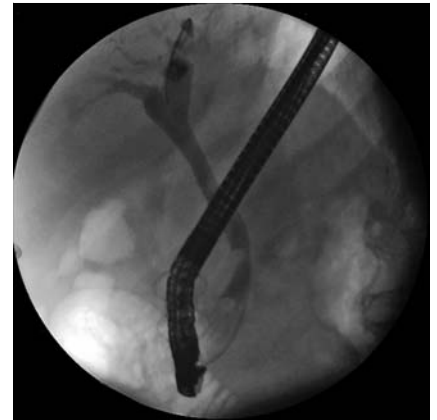
The authors declare that they have no conflict of interest.



► **Fig. 2** **a** Endoscopic retrograde cholangiopancreatography (ERCP) revealing a stricture of the duodenal bulb with a luminal diameter of less than 10 mm. **b** Duodenal bulb stricture after endoscopic balloon dilation up to 12 mm. **c** Duodenal bulb stricture with lumen-apposing metal stent in place.



▶ Video 1 Endoscopic placement of a temporary stent allowed access into the papilla to perform endoscopic retrograde cholangiopancreatography and treat choledocholithiasis.



▶ Fig. 3 ERCP cholangiogram showing two 10-mm stones in the common bile duct.

The authors

Ana Catarina Carvalho¹, Marta Moreira², Tarcísio Araújo², Jorge Canena³, Luís Lopes^{2,4,5}

- 1 Department of Gastroenterology, Centro Hospitalar Tondela-Viseu, E.P.E., Viseu, Portugal
- 2 Department of Gastroenterology, Unidade Local de Saúde Alto Minho, Viana do Castelo, Portugal
- 3 Department of Gastroenterology, Nova Medical School/Faculty of Medical Sciences, Lisbon, Portugal
- 4 Life and Health Sciences Research Institute (ICVS), School of Medicine, University of Minho, Braga, Portugal
- 5 ICVS/3B's – PT Government Associate Laboratory, Braga/Guimarães, Portugal

Corresponding author

Ana Catarina Carvalho, MD

Department of Gastroenterology, Centro Hospitalar Tondela-Viseu, E.P.E., Av. Rei D. Duarte, 3504-509 Viseu, Portugal
anacatarina54@gmail.com

References

- [1] Santos-Fernandez J, Paiji C, Shakhathreh M et al. Lumen-apposing metal stents for benign gastrointestinal tract strictures: an international multicenter experience. *World J Gastrointest Endosc* 2017; 9: 571–578. doi:10.4253/wjge.v9.i12.571

- [2] Daoud ND, Ghaz H, Mzaik O et al. Endoscopic management of luminal strictures: beyond dilation. *Dig Dis Sci* 2022; 67: 1480–1499. doi:10.1007/s10620-022-07396-w
- [3] Jain D. Efficacy and safety of lumen-apposing metal stent for benign gastrointestinal stricture. *Ann Gastroenterol* 2018. doi:10.20524/aog.2018.0272
- [4] Moreira M, Pita I, Fernandes J et al. Lumen-apposing metal stents (LAMs) in the management of refractory GI stenosis: a series of 3 cases. *GE Port J Gastroenterol* 2022; 29: 64–67. doi:10.1159/000514782

Bibliography

Endoscopy 2023; 55: E116–E117

DOI 10.1055/a-1944-9222

ISSN 0013-726X

published online 14.10.2022

© 2022. The Author(s).

This is an open access article published by Thieme under the terms of the Creative Commons Attribution-NonDerivative-NonCommercial License, permitting copying and reproduction so long as the original work is given appropriate credit. Contents may not be used for commercial purposes, or adapted, remixed, transformed or built upon. (<https://creativecommons.org/licenses/by-nc-nd/4.0/>)

Georg Thieme Verlag KG, Rüdigerstraße 14, 70469 Stuttgart, Germany



ENDOSCOPY E-VIDEOS

<https://eref.thieme.de/e-videos>



Endoscopy E-Videos is an open access online section, reporting on interesting cases and new techniques in gastroenterological endoscopy. All papers include a high quality video and all contributions are freely accessible online. Processing charges apply (currently EUR 375), discounts and waivers acc. to HINARI are available.

This section has its own submission website at <https://mc.manuscriptcentral.com/e-videos>