



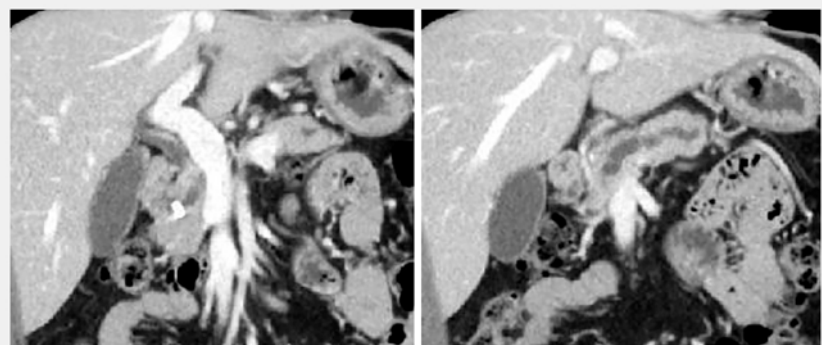
Recanalization using a novel drill-shaped dilator for a severe pancreatic duct stricture and impacted pancreatic duct stone

Pancreatic duct stones can cause severe acute pancreatitis and are sometimes fatal. Endoscopic pancreatic duct drainage has been established as a first-line treatment [1,2]; however, hard stones can make passing through strictures challenging. A Soehendra stent retriever with a screw tip (SSR-7; Cook Medical, Tokyo, Japan) may be useful in this situation [3], but a serious complication can occur should the tip of the stent retriever detach and migrate into the pancreatic duct [4]. A novel dilator with a unique shape was recently developed (Tornus ES for 0.025-inch guidewire; 7 Fr, stainless steel; Asahi Intecc, Aichi, Japan) [5] (► **Fig. 1**). This drill-shaped dilator can be rotated to break through strictures. Here, we describe recanalization using this novel drill-shaped dilator for a patient with severe pancreatic duct stricture and an impacted pancreatic duct stone (► **Video 1**).

A 49-year-old man with acute pancreatitis due to a pancreatic duct stone was admitted to our hospital. Computed tomography scans showed an impacted pancreatic duct stone in the pancreatic head with dilatation of the caudal pancreatic duct (► **Fig. 2**). We performed pancreatic duct drainage via the papilla. Although the caudal pancreatic duct could not be visualized on pancreatography because of the impacted stone, a guidewire was advanced across the stone into the dilated caudal pancreatic duct (► **Fig. 3**). Despite the use of various dilation devices, it was difficult to break through the stricture. With clockwise rotation, the novel drill-shaped dilator could however be passed through the stricture, while chipping away at the stone, without requiring a strong pushing force (► **Fig. 4**). A 5-Fr plastic stent was then successfully placed beyond the pancreatic duct stone (► **Fig. 5**). There were no adverse events and the patient was subsequently discharged.



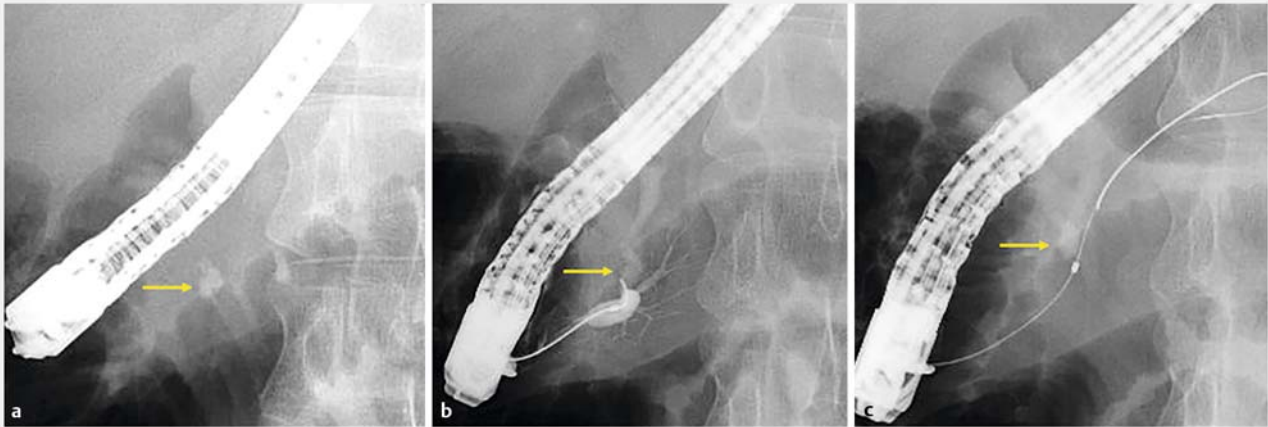
► **Fig. 1** Photograph of the novel drill-shaped dilator that can be advanced by rotation of the handle.



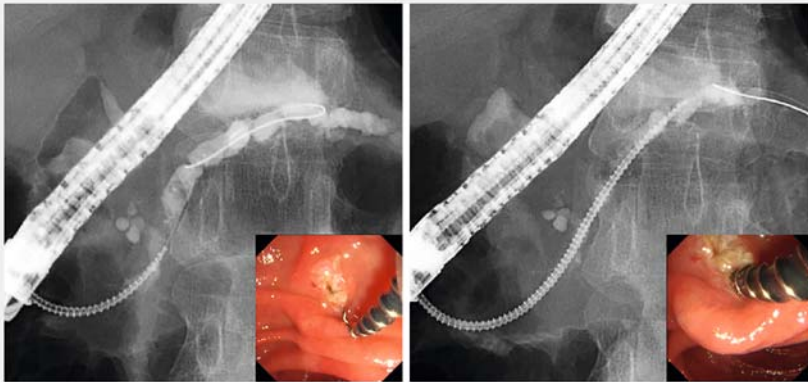
► **Fig. 2** Computed tomography scans showing pancreatitis due to an impacted pancreatic duct stone in the head of the pancreas

This novel drill-shaped dilator may be safe and effective for severe pancreatic duct strictures, and provides an innovative device for recanalization.

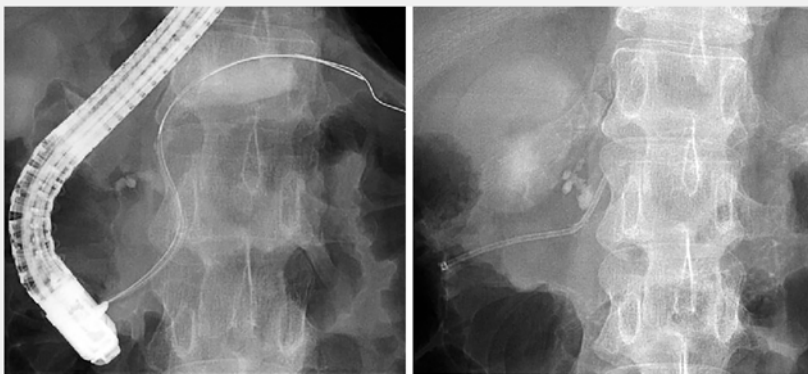
Endoscopy_UCTN_Code_TTT_1AR_2AG



► **Fig. 3** Radiographic images taken during endoscopic retrograde pancreatography showing: **a** a large pancreatic duct stone in the pancreatic head (yellow arrow); **b, c** a guidewire advanced into the dilated caudal pancreatic duct, although attempts to pass various dilators through the pancreatic duct stone failed.



► **Fig. 4** Fluoroscopic images (inset endoscopic images) showing the drill dilator being successfully passed through the impacted pancreatic duct stone.



► **Fig. 5** Fluoroscopic images showing successful placement of a 5-Fr plastic stent beyond the pancreatic duct stone.

Competing interests

The authors declare that they have no conflict of interest.

The authors

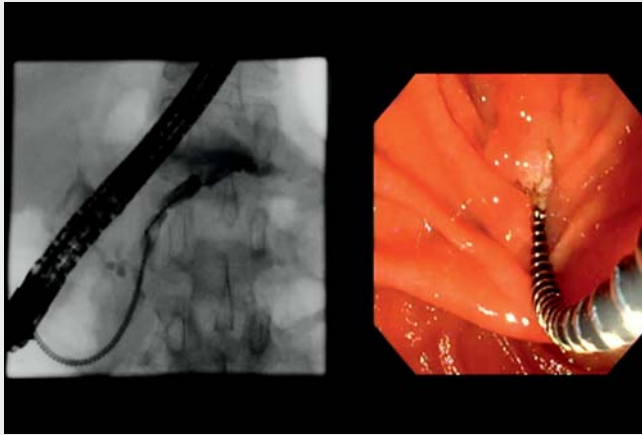
Hideyuki Shiomi, Ryota Nakano, Shogo Ota, Takashi Nishimura, Hirayuki Enomoto, Hiroko Iijima

Division of Gastroenterology and Hepatobiliary and Pancreatic Diseases, Department of Internal Medicine, Hyogo Medical University, Mukogawa, Japan

Corresponding author

Hideyuki Shiomi, MD

Division of Gastroenterology and Hepatobiliary and Pancreatic Diseases, Department of Internal Medicine, Hyogo Medical University, 1-1 Mukogawa-cho, Nishinomiya 663-8501, Japan
hideshio0403@gmail.com



Video 1 Recanalization using a novel drill-shaped dilator in a patient with a severe pancreatic duct stricture and an impacted pancreatic duct stone.

References

- [1] Deviere J. Pancreatic stents. *Gastrointest Endosc Clin N Am* 2011; 21: 499–510
- [2] Adler DG, Lichtenstein D, Baron TH et al. The role of endoscopy in patients with chronic pancreatitis. *Gastrointest Endosc* 2006; 63: 933–937
- [3] Ogura T, Kamiyama R, Yamada M et al. Recanalization method for pancreatic duct stricture complicated by a huge pancreatic stone. *Endoscopy* 2018; 50: E250–E251
- [4] Ogura T, Okuda A, Miyano A et al. Successful digital cholangioscopy removal of a stent-retriever tip migrated into the periphery of the bile duct. *Endoscopy* 2018; 50: E113–E114
- [5] Yamada M, Hara K, Haba S et al. Endoscopic ultrasound-guided hepaticogastrostomy using a novel drill dilator. *Endoscopy* 2022. doi:10.1055/a-1838-3682

Bibliography

Endoscopy 2023; 55: E351–E353

DOI 10.1055/a-1986-7295

ISSN 0013-726X

© 2023. The Author(s).

This is an open access article published by Thieme under the terms of the Creative Commons Attribution-NonDerivative-NonCommercial License, permitting copying and reproduction so long as the original work is given appropriate credit. Contents may not be used for commercial purposes, or adapted, remixed, transformed or built upon. (<https://creativecommons.org/licenses/by-nc-nd/4.0/>)

Georg Thieme Verlag KG, Rüdigerstraße 14, 70469 Stuttgart, Germany



ENDOSCOPY E-VIDEOS

<https://eref.thieme.de/e-videos>



Endoscopy E-Videos is an open access online section, reporting on interesting cases

and new techniques in gastroenterological endoscopy. All papers include a high quality video and all contributions are freely accessible online. Processing charges apply (currently EUR 375), discounts and wavers acc. to HINARI are available.

This section has its own submission website at

<https://mc.manuscriptcentral.com/e-videos>