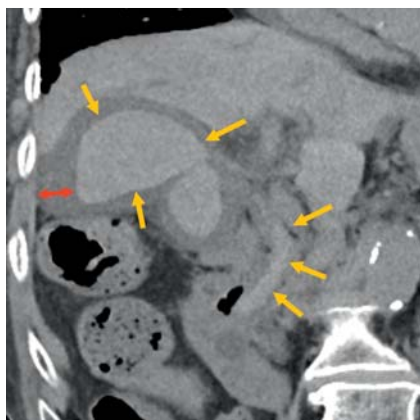
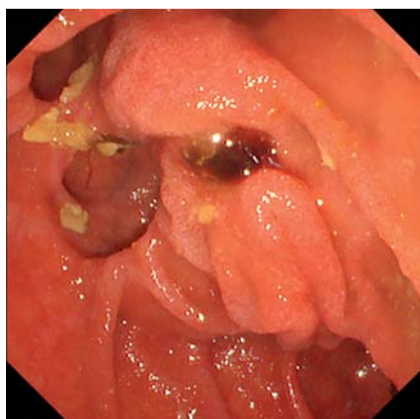


A novel technique of endoscopic introducer-assisted transpapillary gallbladder aspiration prior to drainage in a patient with acute cholecystitis

OPEN
ACCESS

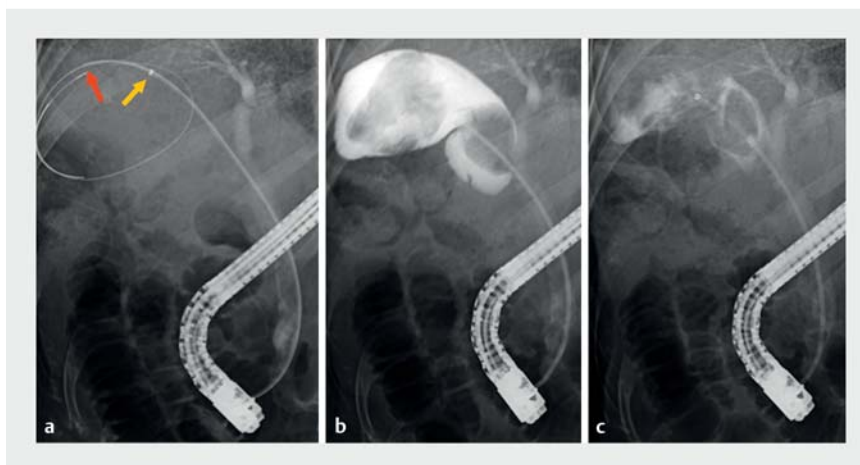


► **Fig. 1** Abdominal computed tomography (CT), coronal section. CT revealed a swollen gallbladder with an edematous wall and peripheral effusion (red double-headed arrow) containing a high-density structure suggestive of blood clots. The clots had flooded the common bile duct (yellow arrows).



► **Fig. 2** Endoscopic view of the papilla of Vater before biliary cannulation, demonstrating the clots impacted in the papilla.

Endoscopic transpapillary gallbladder drainage (ET-GBD) is the preferred technique in patients with acute cholecystitis and cholangitis [1]. Meta-analyses have reported technical and clinical success rates of 83% and 88.1% respectively [1, 2]. Aspiration of the infected bile and



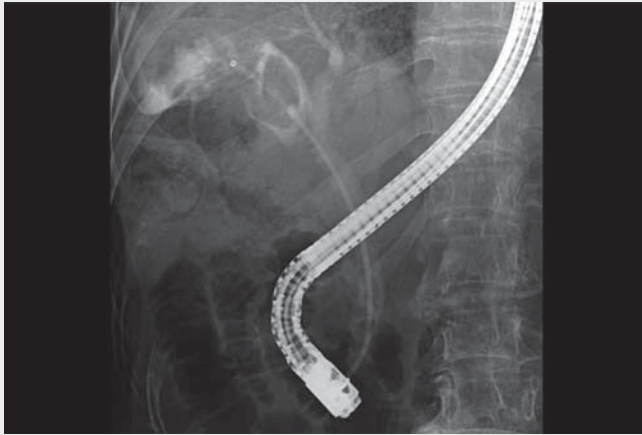
► **Fig. 3** Gallbladder aspiration and saline/contrast medium irrigation through the outer sheath of the endoscopic introducer. **a** An endoscopic introducer (EndoSheather) is advanced over the guidewire into the gallbladder. The red arrow indicates the tip of the inner sheath and the yellow arrow the radiopaque tip of the outer sheath. **b** Through the outer sheath, saline/contrast medium liquid is injected following aspiration of the gallbladder contents (80 ml) using a 50-ml syringe. Massive clots emerge in the gallbladder. **c** Gallbladder aspiration through the outer sheath is quickly performed.

saline irrigation using nasobiliary drainage is an acceptable method [1]; however, the performance of this maneuver during ET-GBD is time-consuming because of the high viscosity of the bile and the small caliber of the conventional endoscopic retrograde cholangiopancreatography catheter. Endoscopic introducer-assisted procedures have recently emerged as effective pancreaticobiliary interventions [3, 4]. This article describes gallbladder aspiration and irrigation using a novel dual-structure catheter.

An 83-year-old woman was referred to our department with suspected moderate acute hemorrhagic cholecystitis and cholangitis (► **Fig. 1**). ET-GBD was performed, followed by biliary clot removal (► **Video 1**). With the swollen Vater's papilla (major duodenal papilla) impacted by blood clots, we assumed the presence of acute hemorrhagic cholecystitis (► **Fig. 2**). Following biliary cystic duct cannulation using a traditional cannula

with a guidewire, we exchanged the cannula for an endoscopic introducer (EndoSheather; Piolax, Yokohama, Japan). After removal of the inner sheath of this device, gallbladder aspiration and saline/contrast medium irrigation using a 50-ml syringe were quickly performed through the outer sheath (► **Fig. 3**). ET-GBD was then performed without complications. The endoscopic introducer is composed of an inner sheath with a tapered tip, and an outer sheath (► **Video 1**). The internal and external diameters of the outer sheath are 6.2Fr and 7.2Fr, respectively [3]. Therefore, the outer sheath can easily advance into the gallbladder without obstruction in the cystic duct. In addition, the large caliber of the outer sheath facilitates quick aspiration and/or irrigation of the gallbladder in appropriate cases.

Endoscopy_UCTN_Code_TTT_1AR_2AK0



Video 1 A novel technique of endoscopic introducer-assisted transpapillary gallbladder aspiration prior to drainage in a patient with acute cholecystitis.

Competing interests

The authors declare that they have no conflict of interest.

The authors

Tesshin Ban¹, **Yoshimasa Kubota**¹, **Kazuki Hayashi**², **Takuya Takahama**¹, **Shun Sasoh**¹, **Tomoaki Ando**¹, **Takashi Joh**¹

- 1 Department of Gastroenterology and Hepatology, Gamagori City Hospital, Gamagori, Aichi, Japan
- 2 Department of Gastroenterology, Nagoya City East Medical Center, Nagoya, Aichi, Japan

Corresponding author

Tesshin Ban, MD

1-1 Mukaida, Hirata, Gamagori, Aichi 443-8501, Japan
venzosan0204@gmail.com

References

- [1] Saumoy M, Yang J, Bhatt A et al. Endoscopic therapies for gallbladder drainage. *Gastrointest Endosc* 2021; 94: 671–684
- [2] Mohan BP, Khan SR, Trakroo S et al. Endoscopic ultrasound-guided gallbladder drainage, transpapillary drainage, or percutaneous drainage in high risk acute cholecystitis patients: a systematic review and comparative meta-analysis. *Endoscopy* 2020; 52: 96–106
- [3] Kito Y, Kato A, Yoshida M et al. Facile and secure deployment of plastic stent through an endoscopic tapered sheath for endoscopic ultrasound-guided drainage. *Endoscopy* 2022; 54: E674–E675
- [4] Kato A, Natsume M, Yoshida M et al. Endoscopic tapered sheath-assisted removal of a proximally migrated pancreatic stent. *Endoscopy* 2022; 54: E767–E768

Bibliography

Endoscopy 2023; 55: E480–E481

DOI 10.1055/a-2020-9680

ISSN 0013-726X

© 2023. The Author(s).

This is an open access article published by Thieme under the terms of the Creative Commons Attribution-NonDerivative-NonCommercial License, permitting copying and reproduction so long as the original work is given appropriate credit. Contents may not be used for commercial purposes, or adapted, remixed, transformed or built upon. (<https://creativecommons.org/licenses/by-nc-nd/4.0/>)

Georg Thieme Verlag KG, Rüdigerstraße 14, 70469 Stuttgart, Germany



ENDOSCOPY E-VIDEOS

<https://eref.thieme.de/e-videos>



Endoscopy E-Videos is an open access online section, reporting on interesting cases

and new techniques in gastroenterological endoscopy. All papers include a high quality video and all contributions are freely accessible online. Processing charges apply, discounts and waivers acc. to HINARI are available.

This section has its own submission website at

<https://mc.manuscriptcentral.com/e-videos>