

Successful endoscopic removal of a large colonic lipoma causing intussusception



Fig. 1 Computed tomography shows a fatty tissue mass (arrow) in the transverse colon that is causing a colonic intussusception.

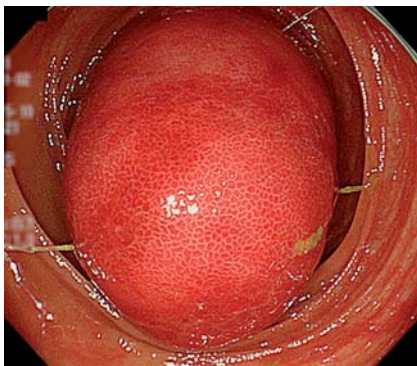


Fig. 2 Colonoscopy shows a large, hyperemic, round mass occupying more than 75% of the lumen.

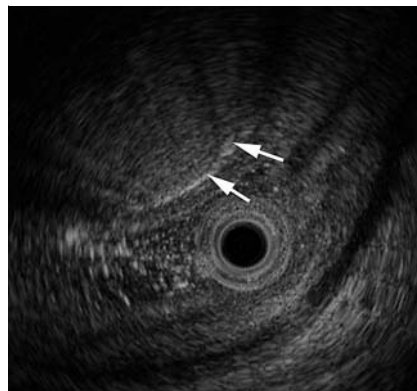


Fig. 3 Endoscopic ultrasonography shows a hyperechoic mass (arrows) in the submucosal layer.

A 73-year-old woman presented with symptoms of intermittent abdominal pain without hematochezia. Mild tenderness was noted on palpation over the right iliac fossa; however, all laboratory data, including the C-reactive protein level, were normal. Computed tomography revealed a fatty tissue mass in the transverse colon causing a colonic intus-

susception (● Fig. 1). Colonoscopy revealed a large mass in the ascending colon (● Fig. 2). Endoscopic ultrasonography revealed a hyperechoic mass in the submucosal layer (● Fig. 3). On the contrast radiograph, the semipedunculated mass was seen to arise from the ileocecal valve; the intussusception was disinvaginated by inserting the colonoscope (● Fig. 4). The

diagnosis was ascending–transverse colonic intussusception caused by a large lipoma originating at the ileocecal valve. Because of its shape, the endoscopic mucosal resection technique could be used to remove the lipoma without complications (● Fig. 5). The lesion was captured with a snare (SD-210U-25; Olympus Medical Systems Corp., Tokyo, Japan) after saline had been injected. Electrocautery (forced coagulation) was applied to cut the lesion. The resected specimen was a large submucosal tumor, 55×30×22 mm in size, with a yellowish cut surface (● Fig. 6). Histopathology indicated proliferating fat cells in the submucosal layer, and a lipoma was diagnosed. The patient was discharged from the hospital 5 days after treatment.

Lipomas are benign, nonepithelial tumors that occur throughout the gastrointestinal tract, but typically in the colon. Lipomas larger than 2 cm in diameter can cause intussusception, obstruction, or bleeding [1]. Although frequent in children, intestinal intussusception is unusual in adults. A colonic lipoma as the principal point for colonic intussusception is uncommon [2]. Endoscopic methods to remove ileocolonic lipoma have been reported previously [3–6]. However, to our knowledge, the endoscopic removal of a lipoma causing a definite intussusception has not been reported. In previous case reports, most patients with colonic lipoma intussusception have undergone surgical treatment. Endoscopic removal, which is less invasive, may be another option for the treatment of large colonic lipomas.

Endoscopy_UCTN_Code_CPL_1AJ_2AD

Competing interests: None

Ryo Kosaka¹, Tomohiro Noda¹, Junya Tsuboi¹, Kyosuke Tanaka²

¹ Department of Gastroenterology, Matsusaka City Hospital, Matsusaka, Japan

² Department of Endoscopic Medicine, Mie University Hospital, Tsu, Japan

References

- 1 Pfeil SA, Weaver MG, Abdul-Karim FW et al. Colonic lipomas: outcome of endoscopic removal. *Gastrointest Endosc* 1990; 36: 435–438
- 2 Rogers SO Jr, Lee MC, Ashley SW. Giant colonic lipoma as lead point for intermittent colo-colonic intussusception. *Surgery* 2002; 131: 687–688



Fig. 4 Contrast radiograph shows the large colonic mass to be semipedunculated.

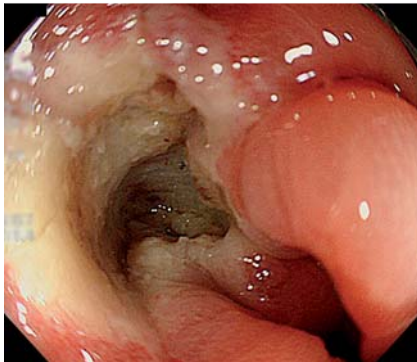


Fig. 5 The mass is removed endoscopically without perforation.



Fig. 6 The resected specimen is a large submucosal tumor, 55 × 30 × 22 mm in size, with a yellowish cut surface.

- 3 Bar-Meir S, Halla A, Baratz M. Endoscopic removal of colonic lipoma. *Endoscopy* 1981; 13: 135–136
- 4 Raju GS, Gomez G. Endoloop ligation of a large colonic lipoma: a novel technique. *Gastrointest Endosc* 2005; 62: 988–990
- 5 Morimoto T, Fu KI, Konuma H et al. Peeling a giant ileal lipoma with endoscopic unroofing and submucosal dissection. *World J Gastroenterol* 2010; 16: 1676–1679
- 6 Ivekovic H, Rustemovic N, Brkic T et al. Endoscopic ligation (“Loop-And-Let-Go”) is effective treatment for large colonic lipomas: a prospective validation study. *BMC Gastroenterol* 2014; 14: 122

Bibliography

DOI <http://dx.doi.org/10.1055/s-0034-1377953>
Endoscopy 2014; 46: E551–E552
 © Georg Thieme Verlag KG
 Stuttgart · New York
 ISSN 0013-726X

Corresponding author

Kyosuke Tanaka, MD, PhD
 Department of Endoscopic Medicine
 Mie University Hospital
 2-174 Edobashi, Tsu, Mie
 514-8507 Japan
 Fax: +81-59-231-5285
kyosuket@qa2.so-net.ne.jp