

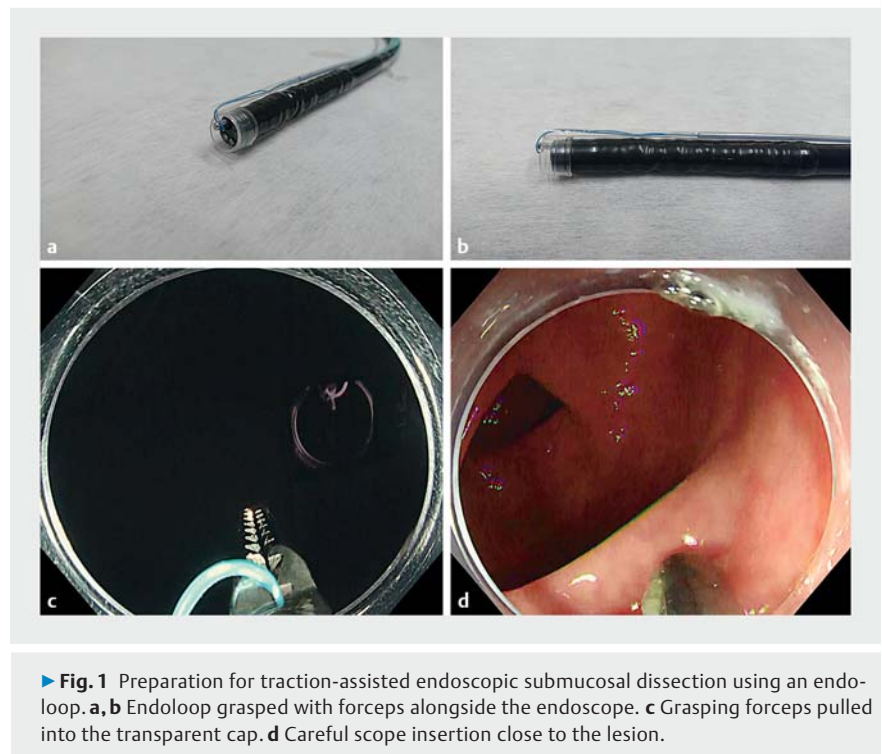
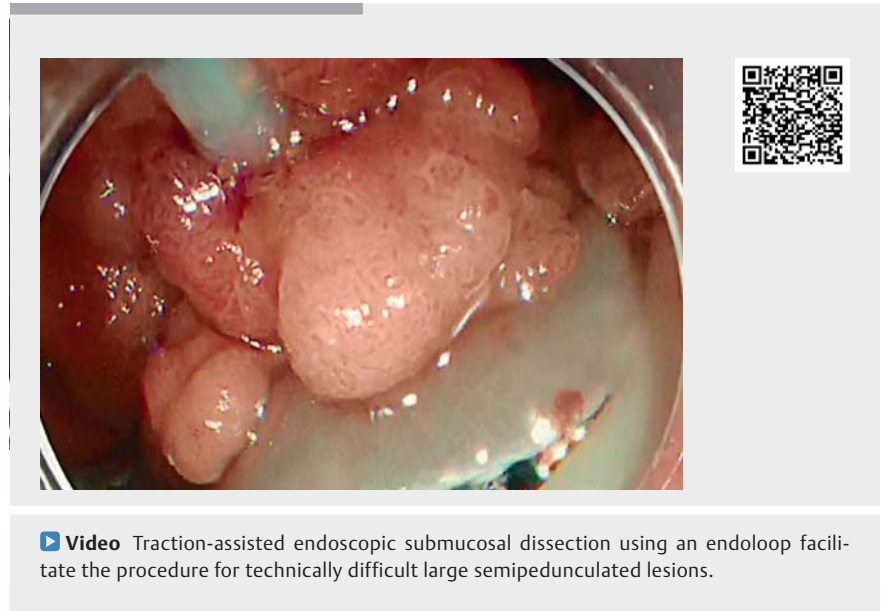
Traction-assisted colorectal endoscopic submucosal dissection using an endoloop for large semipedunculated lesions

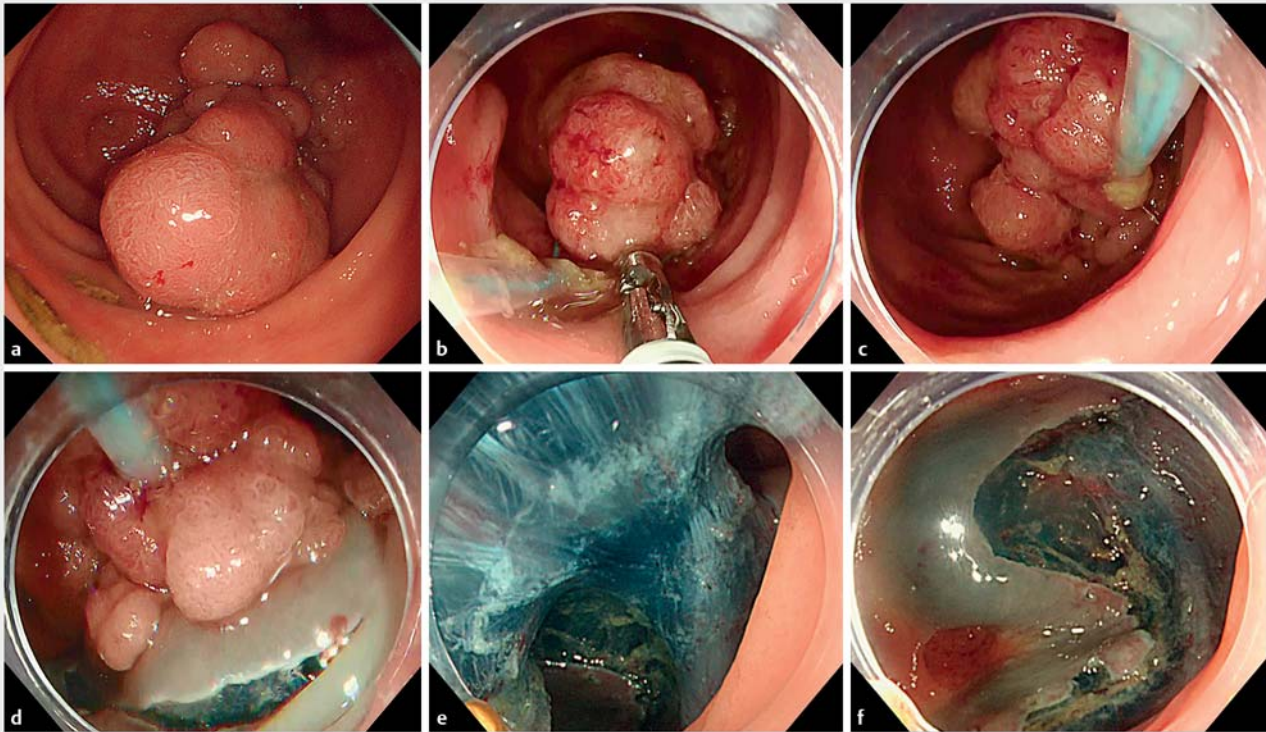
Endoscopic submucosal dissection (ESD) for large semipedunculated lesions remains a challenging technique [1]. These lesions often have severe fibrosis or display muscle retracting sign during ESD. Despite the recent advantages of traction-assisted colorectal ESD [2,3], the efficacy of this technique is rarely investigated for such lesions. Here we describe a case of traction-assisted ESD using an endoloop (MAJ-254; Olympus, Tokyo, Japan) for the treatment of a large semipedunculated lesion in the right colon (► **Video 1**).

A 73-year-old man was referred to our hospital for treatment of a colonic lesion. Lower endoscopy showed a large semipedunculated lesion in the cecum, 50mm in size. As technical difficulties were expected, and traction using a conventional clip was likely to tear the lesion, we attempted to obtain traction using an endoloop.

The endoloop was held alongside the scope using a grasping forceps and brought to the lesion carefully, where it was released (► **Fig. 1**). The lesion was gently grasped with the endoloop, and then pulled toward the anal side. The traction improved visibility of the submucosal layer, facilitating the dissection procedure. The lesion was promptly resected en bloc in 35 minutes without adverse event (► **Fig. 2**). Histological evaluation revealed Tis cancer with free margins.

As large semipedunculated lesions are heavy, traction via clip risks tearing the marginal mucosa or damaging the specimen. The endoloop maintained good traction throughout the procedure. This method is not always effective because traction cannot be applied in all directions. In addition, if colonoscope insertion is technically difficult, it could also be difficult to bring the endoloop to the lesion while grasping it. However, this method offers an alternative for technically difficult large semipedunculated lesions in colorectal ESD.





► **Fig. 2** Procedure of traction-assisted endoscopic submucosal dissection (ESD) using an endoloop. **a** Large semipedunculated lesion located in the cecal base. **b, c** Lesion gently grasped with an endoloop and pulled toward the anal side. **d, e** Dissection becomes easy and safe with traction. **f** Mucosal defect after ESD.

Endoscopy_UCTN_Code_TTT_1AQ_2AD

Competing interests

The authors declare that they have no conflict of interest.

The authors

Maiko Takita, Eiji Sakai, Takashi Muramoto, Ken Ohata

Department of Gastrointestinal Endoscopy, NTT Medical Center Tokyo, Tokyo, Japan

Corresponding author

Ken Ohata, MD, PhD

Department of Gastrointestinal Endoscopy, NTT Medical Center Tokyo, 5-9-22 Higashi-Gotanda Shinagawa-ku, Tokyo 141-8625, Japan

Fax: +81-3-34486541

ken.ohata1974@gmail.com

References

- [1] Choi YS, Lee JB, Lee EJ et al. Can endoscopic submucosal dissection technique be an alternative treatment option for a difficult giant (30 mm) pedunculated colorectal polyp? *Dis Colon Rectum* 2013; 56: 660–666
- [2] Sakamoto N, Osada T, Shibuya T et al. The facilitation of a new traction device (S-O clip) assisting endoscopic submucosal dissection for superficial colorectal neoplasms. *Endoscopy* 2008; 40: E94–E95
- [3] Mori H, Kobara H, Nishiyama N et al. Novel effective and repeatedly available ring-thread counter traction for safer colorectal endoscopic submucosal dissection. *Surg Endosc* 2017; 31: 3040–3047

Bibliography

DOI <https://doi.org/10.1055/a-1104-5082>
 Published online: 5.2.2020
 Endoscopy 2020; 52: E279–E280
 © Georg Thieme Verlag KG
 Stuttgart · New York
 ISSN 0013-726X

ENDOSCOPY E-VIDEOS

<https://eref.thieme.de/e-videos>



Endoscopy E-Videos is a free access online section, reporting on interesting cases and new techniques in gastroenterological endoscopy. All papers include a high quality video and all contributions are freely accessible online.

This section has its own submission website at <https://mc.manuscriptcentral.com/e-videos>