

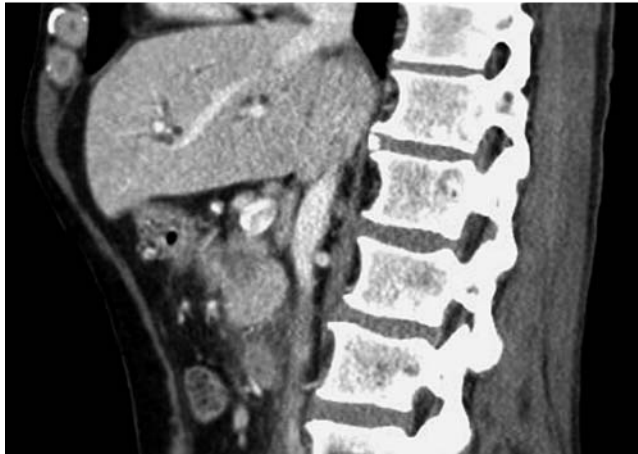
## Obstructive jaundice as a complication of a peptic duodenal ulcer mimicking pancreatic cancer

A 56-year-old man was admitted to our gastroenterology department for upper gastrointestinal bleeding. The patient was a heavy smoker and drank an average of 50 g of ethanol per day. On urgent upper endoscopy, an active bleeding ulcer was observed in the upper wall of the first duodenal flexure. In spite of therapeutic sclerosis with epinephrine 1:10000 (4 mL) and etoxiesclerol 2% (4 mL) the ulcer bled again. After a second unsuccessful attempt at therapeutic endoscopy with injection of epinephrine 1:10000 (6 mL) and etoxiesclerol 2% (4 mL) the patient was operated and the bleeding point sutured. After 2 months, the patient was readmitted for painless obstructive jaundice. An abdominal computed tomography (CT) scan showed dilated intra- and extrahepatic bile ducts (up to the intrapancreatic portion) and an increase in the size of the pancreatic head with an ill-defined hypodense area measuring 21 × 13 mm (● Fig. 1).

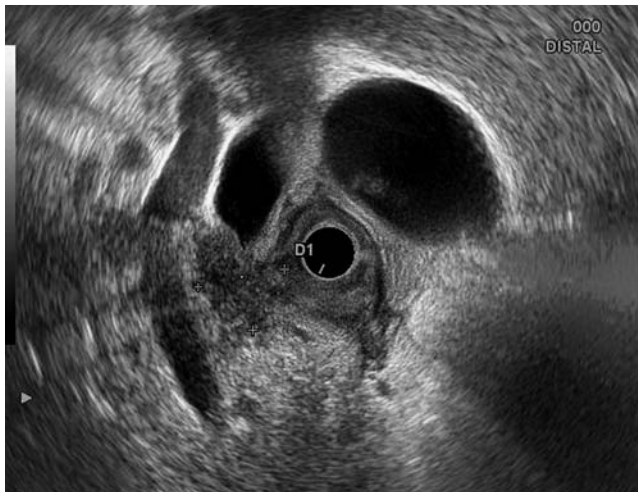
During endoscopic ultrasonography (EUS), a duodenal bulb ulcer with inflammation and mild stenosis of the duodenal flexure was observed. The EUS also revealed a lesion, 20 × 15 mm, with spiculated margins in the head of the pancreas and contiguous with the thickened duodenal wall (● Fig. 2).

Endoscopic biopsies and the cytologic examination of the material obtained by EUS-guided fine-needle aspiration were negative for malignant cells. Percutaneous cholangiography performed shortly afterward showed abrupt obstruction of the distal bile duct. Surgery was finally required to treat the biliary obstruction and a cephalic duodenopancreatectomy was performed. Histological study of the surgical specimen showed a duodenal ulcer with scarring retraction involving the pancreatic head and distal bile duct, but with no malignant infiltration (● Fig. 3). The postoperative course was favorable, and 3 months after the operation the patient was asymptomatic and generally well.

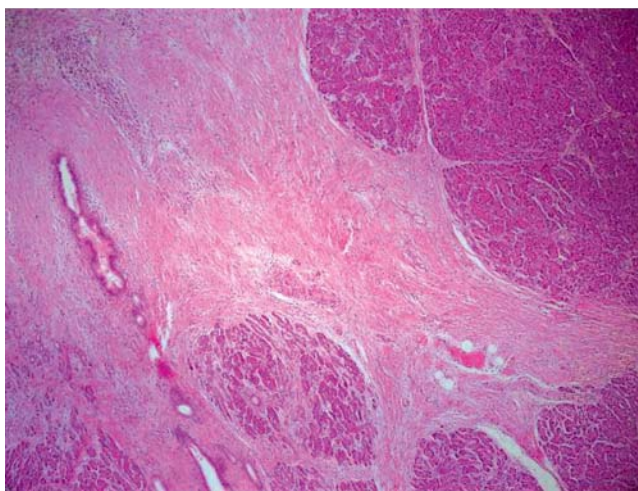
Obstructive jaundice secondary to a local pancreatic lesion has been related to malignant pancreatic tumors or to pseudotumors of inflammatory etiology, such as chronic pancreatitis [1]. Bile obstruction



**Fig. 1** A hypodense lesion visible in the pancreatic head on an abdominal computed tomography (CT) scan.



**Fig. 2** A localized lesion visible in the pancreatic head on radial endoscopic ultrasonography. The lesion is contiguous with the thickened duodenal wall and is causing bile duct obstruction.



**Fig. 3** Histological section showing pancreatic tissue replaced by fibrous scar retraction with starlike morphology mimicking an infiltrating tumor (hematoxylin and eosin, original magnification × 200).

as a complication of the treatment of a peptic ulcer is rare. Recently, this complication has been shown to be the result of a

peri-ulcerous inflammatory component [2] or the result of hemostatic treatment using sclerotic substances [3].

**Competing interests:** None

Endoscopy\_UCTN\_Code\_CCL\_1AF\_2AZ\_3AB  
Endoscopy\_UCTN\_Code\_CCL\_1AZ\_2AZ

**L. Hidalgo<sup>1</sup>, A. Repiso<sup>1</sup>, M. Romero<sup>1</sup>,  
J. Navajas<sup>1</sup>, R. Sánchez-Simón<sup>2</sup>,  
R. Gómez-Rodríguez<sup>1</sup>, J. M. Carrolles<sup>1</sup>**

<sup>1</sup> Gastroenterology Department, Virgen de la Salud Hospital, Toledo, Spain

<sup>2</sup> Anatomical Pathology Department, 'Virgen de la Salud' Hospital, Toledo, Spain

## References

- 1 *Tony E, Yusuf MD, Manoop S, Bhutan MD.* Differentiating pancreatic cancer from pseudo-tumorous chronic pancreatitis. *Curr Gastroenterol Reports* 2002; 4: 135 – 139
- 2 *Chiu-Yung H, Tseng-Shing C, Full-Young C, Shou-Dong L.* Bening nontraumatic inflammatory stricture of mid portion of common bile duct mimicking malignant tumor: Report of two cases. *World J Gastroenterol* 2004; 10: 2153 – 2155
- 3 *Luman W, Hudson N, Choudari CP et al.* Distal biliary stricture as a complication of sclerosant injection for bleeding duodenal ulcer. *Gut* 1994; 35: 1665 – 1667

## Bibliography

**DOI** 10.1055/s-0030-1255785

*Endoscopy* 2010; 42: E294 – E295

© Georg Thieme Verlag KG Stuttgart · New York · ISSN 0013-726X

## Corresponding author

**L. Hidalgo**

Digestive System Services  
Virgen de la Salud Hospital

Avda Barber 30

45004 Toledo

Spain

loha1983@hotmail.com