

Tubercular Ulcer: Not so Uncommon Cause of Odynophagia

Manoj Kohle¹ Vikas Singla² Shivam Khare¹ Nishant Wadhwa³ Pooja Bakshi⁴ Anil Arora⁵

¹Institute of Liver, Gastroenterology and Pancreaticobiliary Sciences, Sir Ganga Ram Hospital, New Delhi, India

²Department of Gastroenterology, Sir Ganga Ram Hospital, New Delhi, India

³Department of Paediatrics, Sir Ganga Ram Hospital, New Delhi, India

⁴Department of Cytopathology, Sir Ganga Ram Hospital, New Delhi, India

Address for correspondence Vikas Singla, DM, Department of Gastroenterology, Sir Ganga Ram Hospital, New Delhi, India (e-mail: singlavikas1979@gmail.com).

⁵Department of Gastroenterology and Hepatology, Sir Gangaram Hospital, New Delhi, India

J Digest Endosc:2020;11:297–297

These images are from a 13-year-old girl, who presented with odynophagia. Upper gastrointestinal (GI) endoscopy revealed longitudinal ulcer in the mid esophagus (►Fig. 1). CT chest ►Fig. 2 and endoscopic ultrasound (EUS) (►Fig. 3) showed a node in the left paratracheal region. Cytology examination showed necrotic granulomas (►Fig. 4), and stain for acid-fast

bacillus (AFB) was positive. Midesophageal ulcers have varied etiology such as viral diseases, pill esophagitis, corrosive injury, submucosal lesions, or malignancy. In endemic places, tuberculosis should be considered as differential diagnosis. Subepithelial bulge with ulcer (summit ulcer) has been explained in tuberculosis.

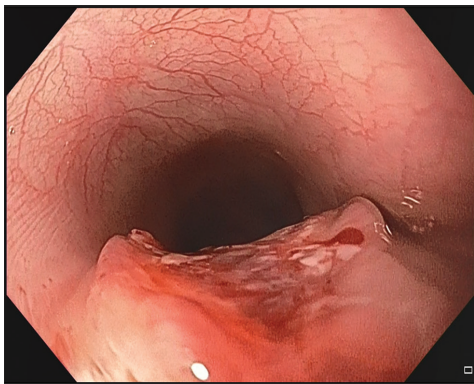


Fig. 1 Longitudinal ulcer in the esophagus over the underlying bulge.

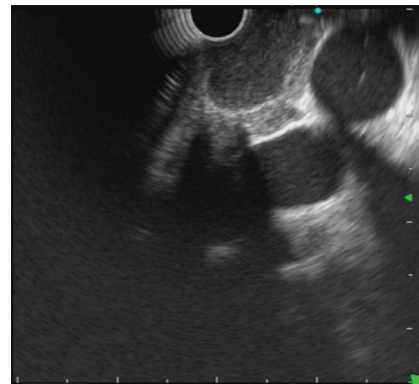


Fig. 3 Endoscopic ultrasound examination from mid esophagus showing homogeneous hypoechoic node in left lower paratracheal region.

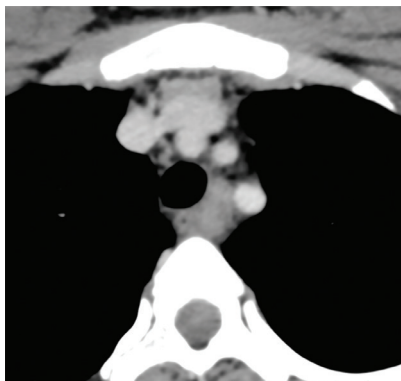


Fig. 2 CT image of the chest showing enlarged node in left lower paratracheal region.

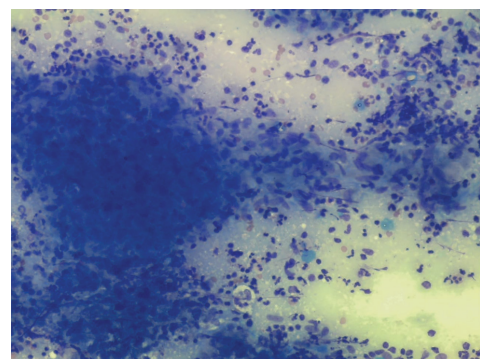


Fig. 4 Cytology examination of the EUS FNA sample showing epithelioid granuloma, MGG stain, 20X.

DOI <https://doi.org/10.1055/s-0040-1722386>
ISSN 0976-5042.

© 2020. Society of Gastrointestinal Endoscopy of India.
This is an open access article published by Thieme under the terms of the Creative Commons Attribution-NonDerivative-NonCommercial-License, permitting copying and reproduction so long as the original work is given appropriate credit. Contents may not be used for commercial purposes, or adapted, remixed, transformed or built upon. (<https://creativecommons.org/licenses/by-nc-nd/4.0/>).
Thieme Medical and Scientific Publishers Pvt. Ltd. A-12, 2nd Floor, Sector 2, Noida-201301 UP, India