

Images in Clinical Oncology

Umbilical Metastasis from Ovarian Carcinoma: Sister Mary Joseph's Nodule



Fig 1: Photograph showing umbilical nodule

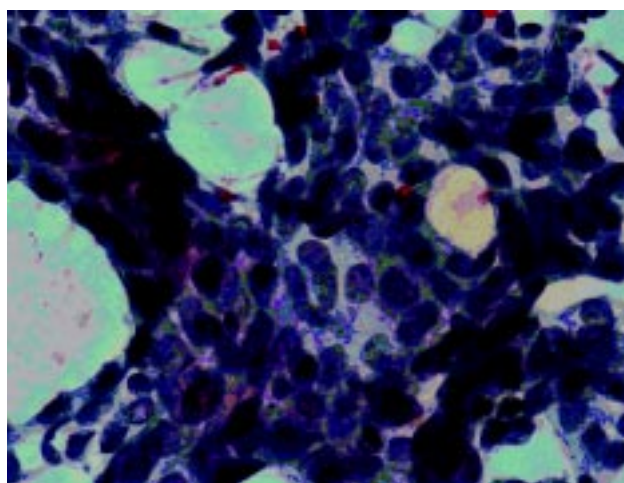


Fig 2: Aspirate from umbilical nodule showing a poorly differentiated carcinoma (Papanicolaou x 200).

Mrs. SY, 38 years old female was diagnosed to have carcinoma ovary stage IV (malignant pleural effusion) in February 2002. She received 3 cycles of neoadjuvant chemotherapy using paclitaxel and carboplatin and underwent interval-debulking surgery followed by 3 more cycles of same chemotherapy till Aug 2002 and achieved complete response. She was disease free for 1 year following which she relapsed with pelvic mass, ascites and retroperitoneal nodes. She was treated with 6 cycles of chemotherapy using cyclophosphamide, adriamycin and cisplatin (CAP) till Jan 2004. She achieved complete response and was disease free for 7 months. In Aug 2004, she developed umbilical nodule (sister Mary Joseph's nodule) shown in fig 1 and pelvic mass. Fine needle aspiration cytology from the nodule showed poorly differentiated carcinoma (fig 2). She received 6 cycles of single agent cisplatin with no response. Following 2 cycles of paclitaxel and adriamycin umbilical nodule regressed completely. However, she died of progressive disease in April 2006.

Roopa Hariprasad, Lalit Kumar, D. Panda & Sandeep Mathur*
Department of Medical oncology & Cytopathology*
All India Institute of Medical Sciences
New Delhi-110029
E mail: lalitaiims@yahoo.com