



# Management of Coincident Pituitary Macroadenoma and Cavernous Carotid Aneurysm: A Systematic Literature Review

Keenan J. Piper<sup>1</sup> Michael Karsy<sup>2</sup> Blair Barton<sup>3</sup> Mindy Rabinowitz<sup>3</sup> Marc R. Rosen<sup>3</sup>  
Gurston G. Nyquist<sup>3</sup> James J. Evans<sup>2</sup> Stavropoula Tjoumakaris<sup>2</sup> Christopher J. Farrell<sup>2</sup>

<sup>1</sup> Sidney Kimmel Medical College, Thomas Jefferson University Hospital, Philadelphia, Pennsylvania, United States

<sup>2</sup> Department of Neurological Surgery, Thomas Jefferson University Hospital, Philadelphia, Pennsylvania, United States

<sup>3</sup> Department of Otolaryngology, Thomas Jefferson University Hospital, Philadelphia, Pennsylvania, United States

Address for correspondence Christopher J. Farrell, MD, Department of Neurological Surgery, Thomas Jefferson University Hospital, Philadelphia 19107, PA, United States  
(e-mail: christopher.farrell@jefferson.edu).

J Neurol Surg Rep 2021;82:e25–e31.

## Abstract

**Introduction** Pituitary adenomas are a common intracranial pathology with an incidence of 15 to 20% in the population while cerebral aneurysms are less common with a prevalence of 1:50 patients. The incidence of aneurysms in patients with pituitary adenoma has been estimated at 2.3 to 5.4% of patients; however, this remains unclear. Equally, the management of concomitant lesions lacks significant understanding.

**Methods** A case report is presented of a concomitant cerebral aneurysm and pituitary adenoma managed by minimally invasive endovascular and endoscopic methods, respectively. A systematic review of the literature for terms “pituitary adenoma” and “aneurysm” yielded 494 studies that were narrowed to 19 relevant articles.

**Results** We report a case of a 67-year-old patient with an enlarging pituitary macroadenoma, cavernous carotid aneurysm, and unilateral carotid occlusion. After successful treatment of the aneurysm by a pipeline flow diverter, the pituitary adenoma was surgically resected by an endoscopic transsphenoidal approach.

**Conclusion** The use of a pipeline flow diverter and endonasal approach was feasible in the treatment of our patient. This is the first report to our knowledge of the use of pipeline flow diversion in the management of a cavernous carotid aneurysm prior to pituitary adenoma treatment.

## Keywords

- ▶ macroadenoma
- ▶ cavernous carotid aneurysm
- ▶ pipeline
- ▶ endoscopic
- ▶ transsphenoidal
- ▶ pituitary adenoma
- ▶ intracranial aneurysm

## Introduction

Pituitary adenomas are the third most common intracranial tumors in adults with an estimated prevalence of approximately 15 to 20% of the population.<sup>1</sup> Although pituitary

adenomas are overwhelmingly benign, they can still confer significant health burden due to visual loss and endocrine dysfunction. Management of pituitary adenomas remains complex due to the heterogeneity of tumor types with multiple guidelines and consensus statements currently

received  
November 8, 2020  
accepted after revision  
May 26, 2021

DOI <https://doi.org/10.1055/s-0041-1735904>.  
ISSN 2193-6358.

© 2021. The Author(s).

This is an open access article published by Thieme under the terms of the Creative Commons Attribution-NonDerivative-NonCommercial-License, permitting copying and reproduction so long as the original work is given appropriate credit. Contents may not be used for commercial purposes, or adapted, remixed, transformed or built upon. (<https://creativecommons.org/licenses/by-nc-nd/4.0/>)

Georg Thieme Verlag KG, Rüdigerstraße 14, 70469 Stuttgart, Germany

being available; however, surgical resection remains the mainstay of treatment for the majority of symptomatic pituitary adenomas.<sup>2-4</sup>

Intracerebral aneurysms show a prevalence of 1:50 for unruptured aneurysms; however, the presence of coincident pituitary adenomas and cerebral aneurysms is rare.<sup>5</sup> Retrospective studies demonstrate an incidence of intracranial aneurysm in patients with a pituitary adenoma of 2.3 to 5.4%,<sup>6,7</sup> suggesting a purely coincidental relationship.

The combination of a cavernous sinus aneurysm embedded within a pituitary adenoma is even rarer and the approach for treatment is controversial. In this report, we detail the management of a patient with a nonfunctioning pituitary macroadenoma and an embedded cavernous carotid aneurysm. A systematic review of the literature was performed showing 20 prior reports of pituitary adenomas with associated aneurysms of the cavernous sinus (►Table 1). We also discuss the integration of modern endovascular therapy and propose a novel treatment strategy.

## Literature Review

A systematic literature review was performed on PubMed with search terms “pituitary adenoma” and “aneurysm.” A total of 494 studies were identified and after review of study titles and abstracts, the number was narrowed down to 20 articles after removing duplicates, studies not in English, and nonclinical studies (►Fig. 1). Patients were included if they demonstrated concomitantly treated pituitary adenomas and intracerebral aneurysms of the cavernous sinus. The Preferred Reporting Items for Systematic Reviews and Meta-Analyses (PRISMA) guidelines were used in drafting this manuscript.

## Case Report

The patient was an asymptomatic 67-year-old male presenting with a nonfunctional pituitary macroadenoma (17 mm × 16 mm × 13 mm) and an associated left cavernous carotid artery aneurysm protruding into the left superior aspect of the tumor discovered incidentally during evaluation for headaches (►Fig. 2). The pituitary adenoma showed superior displacement of the normal pituitary gland and minimal suprasellar extension without abutment of the optic chiasm. Vascular imaging showed a left cavernous carotid artery aneurysm (3.7 mm × 3.4 mm), complete right internal carotid artery (ICA) occlusion, and a small anterior communicating artery (ACOM) aneurysm.

The macroadenoma and aneurysm were followed closely with serial imaging for 6 years until slow progressive growth of the pituitary adenoma demonstrated compression of the optic chiasm. Ophthalmologic evaluation revealed no visual deficits. After a multidisciplinary discussion, a recommendation for initial repair of the aneurysm followed by delayed tumor treatment was made. The patient proceeded initially with attempted coil embolization which could not be completed due to aneurysm anatomy. Subsequently, a

5 mm × 18 mm pipeline flex flow diverter was placed. The patient was maintained on dual antiplatelet therapy and the aneurysm showed complete radiographic occlusion 6 months later (►Fig. 3). Repeat magnetic resonance (MR) imaging showed progression of the macroadenoma (21 mm × 19 mm × 22 mm) with increasing optic tract compression. Unfortunately, before tumor surgery could be performed, the patient suffered a minor cerebrovascular accident (CVA) which was treated with resumption of dual antiplatelet treatment for an additional 6 months and continued on maintenance aspirin.

For the pituitary adenoma resection, an endoscopic transsphenoidal approach was performed using the previously described “1.5 approach” that involves a full unilateral sphenoidotomy and smaller contralateral sphenoidotomy with preservation of bilateral sphenopalatine artery pedicles to the nasal septum.<sup>8</sup> During surgery, extreme caution was taken in the left lateral region of the sella where the aneurysm and only patent carotid artery were located. A gross total resection of the tumor was accomplished. The patient was discharged on postoperative day 1 and aspirin was reinitiated 3 days postsurgery without complication.

## Discussion

The presence of a pituitary macroadenoma with an embedded cavernous sinus aneurysm is an exceptionally rare phenomenon which requires special considerations.<sup>6,9</sup> Currently available guidelines<sup>2-4</sup> do not make specific recommendations on this rare situation. The incorporation of endovascular treatments in the management of pituitary tumors and aneurysms has had limited exploration.

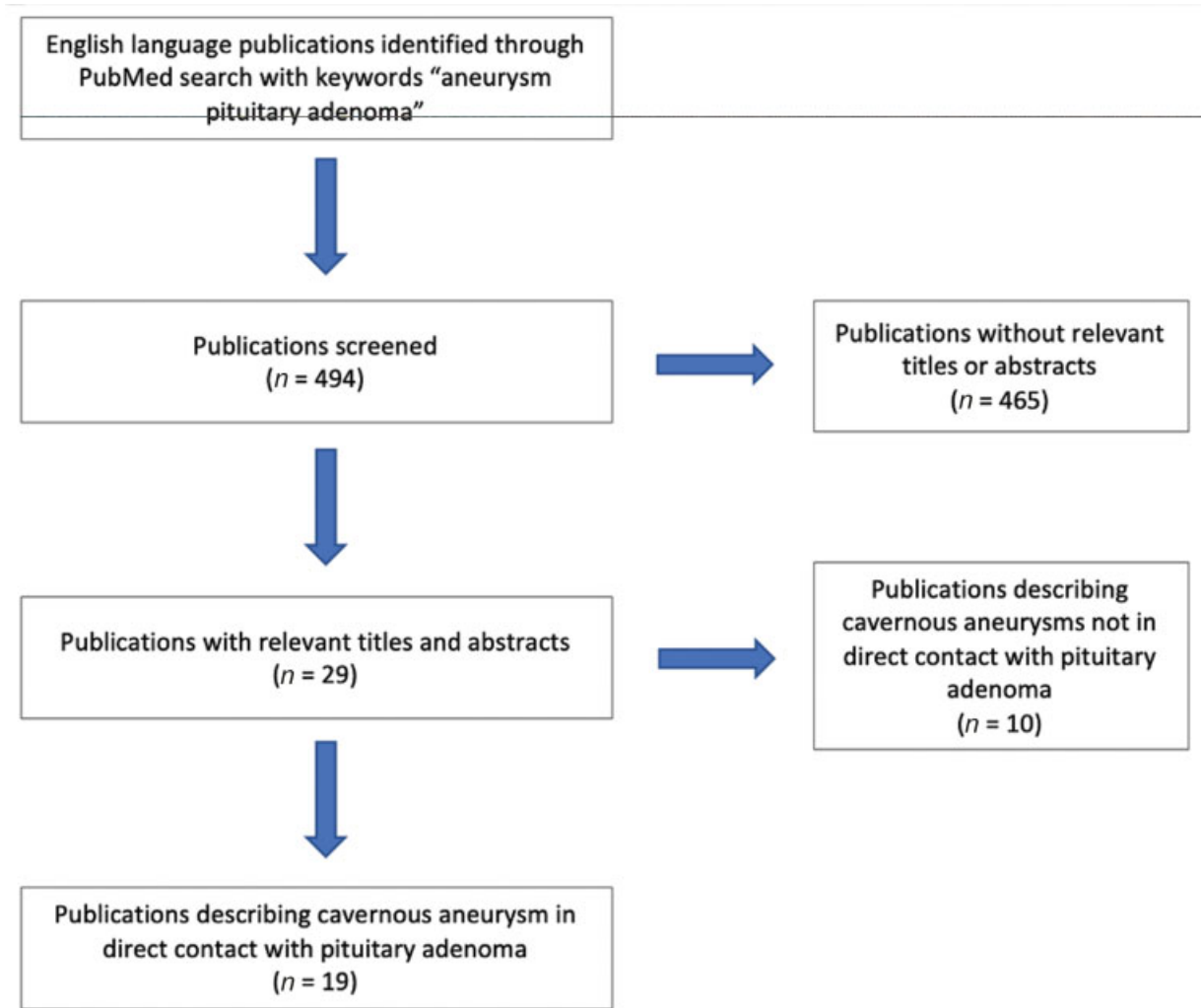
We conducted a review of the literature and analyzed all case reports discussing the phenomenon of a cavernous sinus aneurysm embedded within a pituitary adenoma (►Fig. 1). A total of 20 studies described pituitary adenomas in direct contact with cavernous sinus aneurysms (►Table 1). Regarding aneurysm treatment among the 20 studies, 14 involved endovascular approaches, 5 involved open approaches, and 1 case showed a patient fatality prior to treatment. For adenoma treatment, 4 involved transcranial approaches, 11 involved endonasal approaches, 4 involved medical management, and 1 patient had a fatality prior to treatment (►Fig. 1). To our knowledge, our case represents the first case of initial aneurysm treatment with pipeline flow diversion prior to adenoma treatment. The use of the pipeline aided the treatment of an aneurysm in an otherwise difficult location to treat. Certainly, the use of a pipeline stent and need for antiplatelet medication complicate the timing for adenoma resection; however, as most adenomas are slow growing, the urgency of tumor treatment is less significant.

Several cases of ruptured intracranial carotid artery aneurysms embedded within adenomas causing subarachnoid hemorrhage have been reported.<sup>10</sup> Additionally, aneurysms in the posterior circulation have also been described which may confer increased surgical morbidity during pituitary surgery.<sup>11</sup> Cavernous carotid artery aneurysms located proximal to the distal dural ring present a decreased risk for

**Table 1** Reports of internal carotid artery aneurysms associated with pituitary adenomas

Study (year)	Aneurysm location	Discovery of aneurysm	Surgical approach for aneurysm	Discovery of adenoma	Approach for adenoma
Hori et al (1982) <sup>15</sup>	ICA	Incidental	TC	Acromegaly	TC
Matsuyama and Masuda (1993) <sup>16</sup>	ICA	Incidental	TC	Amenorrhea	TC
Salpietro et al (1997) <sup>22</sup>	CS ICA	Incidental	IVR (coil)	Vision loss	TS
Imamura et al (1998) <sup>32</sup>	CS ICA	Fatal epistaxis	Fatal epistaxis prior to treatment	Incidental	Fatal epistaxis prior to treatment
Ohki et al (1999) <sup>33</sup>	ICA	Incidental	TC	Hyperthyroidism	TS
Sade et al (2004) <sup>23</sup>	CS ICA	Incidental	IVR (coil)	Acromegaly	TS
Yang et al (2005) <sup>27</sup>	CS ICA	Incidental	TC	Hyperprolactinemia	TC
Chuang et al (2006) <sup>28</sup>	CS ICA	Incidental	IVR (coil) + TC	Vision loss, apoplexy	TC
Curto et al (2007) <sup>34</sup>	CS ICA	Incidental	IVR (balloon)	Acromegaly	Medication
Seda et al (2008) <sup>35</sup>	ICA	Incidental	TC	Acromegaly	TS
Soni et al (2008) <sup>36</sup>	CS ICA	Incidental	IVR (balloon)	Ophthalmoplegia, hyperprolactinemia, apoplexy	Medication
Wang et al (2009) <sup>24</sup>	ICA	Incidental	IVR (coil)	Vision loss, hyperprolactinemia	TS
Yu et al (2011) <sup>25</sup>	ICA	Incidental	IVR (coil)	Vision loss, facial paresthesia	TS
Yamada et al (2012) <sup>18</sup>	ICA-SHA	Incidental	IVR (coil)	Incidental	TS
Xia et al (2012) <sup>26</sup>	ICA-SHA	Incidental	IVR (coil)	Acromegaly	TS
Choi et al (2013) <sup>10</sup>	ICA-SHA	Incidental	IVR (coil)	Vision loss	TS
Peng et al (2015) <sup>12</sup>	CS ICA	Epistaxis, vision loss	IVR (balloon)	Incidental	TS
Khalsa et al (2016) <sup>37</sup>	CS ICA	Incidental <sup>a</sup>	IVR for deconstruction (coil + microvascular plug + onyx)	Hyperprolactinemia	Medication
Khachatryan et al (2018) <sup>38</sup>	ICA	Incidental	IVR (coil)	Acromegaly	Medication
Kino et al (2020) <sup>14</sup>	ICA-SHA	Incidental	TC	Vision loss	TS
Present study	CS ICA	Incidental	IVR (pipeline)	Incidental	TS

Abbreviations: CS, cavernous sinus; ICA, internal carotid artery; IVR, interventional radiology; SHA, superior hypophyseal artery; TC, transcranial; TS, transsphenoidal.  
<sup>a</sup>Incidental discovery of aneurysm but progressive growth resulted in vision loss and eventual hemorrhage.



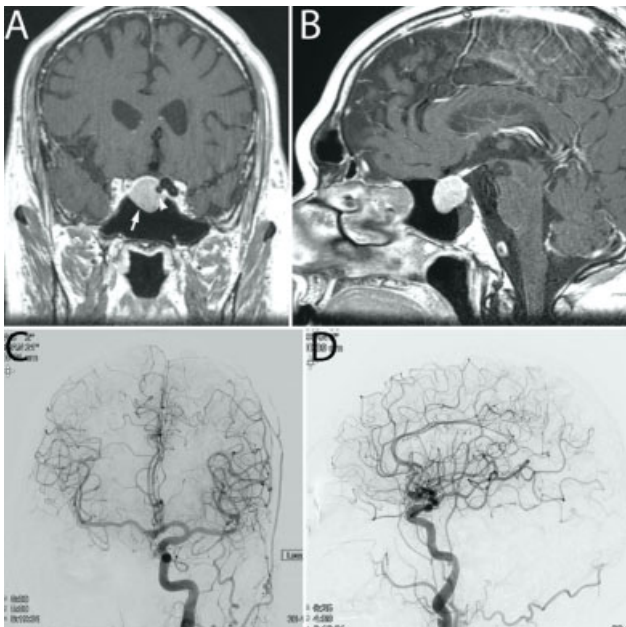
**Fig. 1** PRISMA flowchart describing the methods of literature review in this study. PRISMA, The Preferred Reporting Items for Systematic Reviews and Meta-Analyses.

rupture-associated morbidity and mortality due to their extradural origin and are therefore less commonly treated surgically or endovascularly.<sup>5</sup> Rupture of aneurysms extending within pituitary adenomas, however, may present as pituitary apoplexy with visual, cranial nerve, and endocrine dysfunction.<sup>12</sup> Additionally, cavernous aneurysms located within pituitary adenomas carry risk for catastrophic rupture during surgical resection of these tumors. While the mortality rate for aneurysm rupture during pituitary surgery is not known, a 14% mortality rate after carotid artery injury during transsphenoidal surgery has been reported with a 24% rate of significant neurological disability.<sup>13</sup> As such, the decision to proceed with surgical intervention for pituitary adenomas in these rare cases requires either a preoperative or concomitant strategy for treating the aneurysm.

Fortunately, management strategies for the treatment of cerebral aneurysms have greatly expanded and improved over the last several decades with the decision to coil, flow-divert, or clip a cerebral aneurysm partially depending on the angiographic features of the aneurysm and ability to tolerate single or dual antiplatelet agents to prevent thromboembolic complications. Several cases of simultaneous open

transcranial or combined transcranial and endoscopic clip ligation management of intracranial aneurysm rupture and pituitary adenoma resection have been reported in the setting of subarachnoid hemorrhage.<sup>14</sup> Although open surgical treatment of a carotid cavernous aneurysm and pituitary adenoma has been described previously in the literature,<sup>15,16</sup> this method has been replaced by modern endovascular techniques. Endovascular treatments are generally associated with lower medical comorbidity than open treatment but may require the use of single or dual antiplatelet agents that would delay the timing of pituitary adenoma treatment, especially with the use of flow diversion.<sup>17</sup>

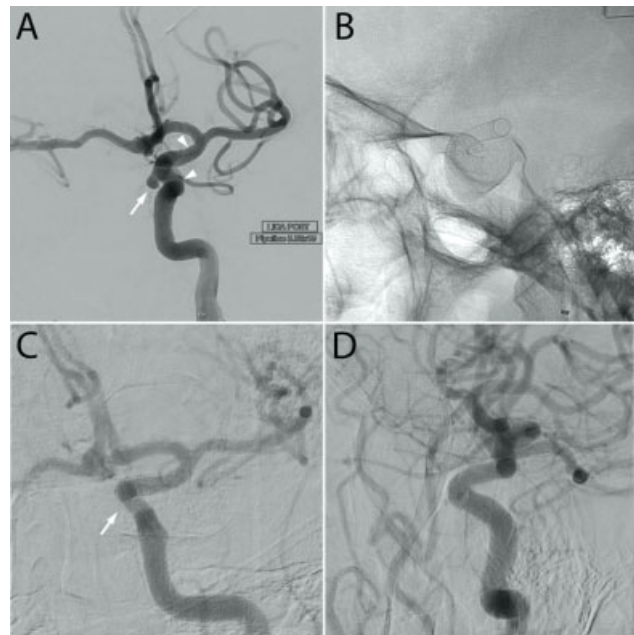
Modern approaches for the treatment of pituitary adenomas and carotid aneurysms have incorporated the use of endovascular treatment to secure aneurysms before tumor surgery.<sup>18</sup> Coil embolization typically does not require the postoperative use of antiplatelet agents and may be considered the preferred option for securing the aneurysm. Endovascular coiling, however, is highly dependent on the aneurysm morphology and may result in incomplete aneurysm obliteration or aneurysm recurrence. Alternatively, for aneurysms with wide necks or not amenable to direct



**Fig. 2** Preoperative MRI and angiogram views of concomitant pituitary adenoma and internal carotid artery aneurysm. Preoperative (A) coronal and (B) sagittal T1 contrast enhanced imaging demonstrates a pituitary macroadenoma with expansion of the sella (arrow). The left sided cavernous segment aneurysm can be noted as a flow void (arrowhead). (C) Anteroposterior and (D) lateral cerebral angiogram views demonstrate a medial projecting cavernous segment aneurysm.

coiling, stent-assisted coiling or flow-diversion strategies may be utilized. Flow diverters promote aneurysm occlusion through a process of endoluminal reconstruction of the parent artery and by redirecting blood flow away from the aneurysm sac. Review of patients at our institution treated with the pipeline embolization device demonstrated a complete aneurysm occlusion rate of 86% which was significantly higher than that achieved with coiling (41%).<sup>19</sup> The thrombogenicity of flow diversion stents, however, requires the use of single- or dual-antiplatelet therapy to reduce the risks of thromboembolic complications. Overall, thromboembolic events have been observed in approximately 6% of patients with higher rates of complications occurring in patients treated with aspirin and clopidogrel therapy for less than 6 months.<sup>20</sup> Therefore, the use of aneurysm obliteration via flow diversion should occur at least 6 months prior to any planned surgical intervention for the pituitary adenoma and may be best reserved for asymptomatic patients without optic apparatus compression or progressively enlarging adenomas where intervention may be safely delayed.

Many cavernous sinus aneurysms do not present with symptoms, though some may result in cranial nerve palsies due to their proximity in the cavernous sinus. According to Stiebel-Kalish et al, the most common presenting symptoms are diplopia (65%), pain (59%), and unilateral headaches (33%).<sup>21</sup> Less commonly, the aneurysms may rupture, causing carotid-cavernous fistulas or severe epistaxis warranting immediate surgical intervention. In 18 of the 20 cases included in our systematic review, the cavernous aneurysms were found incidentally on imaging workup (— **Table 1**) and



**Fig. 3** Diagnostic cerebral angiogram demonstrating complete occlusion of a medial internal carotid artery aneurysm. (A) Anteroposterior and (B) lateral cerebral angiogram views demonstrate a medially projecting cavernous segment aneurysm (arrow) along with the limits of a Pipeline flow diverter (arrowhead). 6-month follow-up (C) anteroposterior and (D) lateral cerebral angiogram views demonstrate resolution of the aneurysm (arrow).

the selection of treatment for these incidental aneurysms will depend on patient risk factors, aneurysm morphology, and tumor behavior including the urgency with which the adenoma must be treated.

In general, the preferred treatment for ruptured or unruptured cavernous aneurysm with a pituitary adenoma would be endovascular coiling. Antiplatelet therapy is generally not required and this intervention has been shown to provide aneurysm protection with low morbidity and facilitate trans-sphenoidal resection of the adenoma.<sup>10,18,22–26</sup> The rare cases of aneurysms are not amenable to coiling for which urgent decompression of the adenoma is necessary, typically due to macroadenomas with suprasellar extension and vision loss or pituitary apoplexy, a transcranial approach with simultaneous tumor resection and clipping of the aneurysm may be indicated.<sup>15,16,27,28</sup> While endoscopic endonasal intracranial clipping of cavernous carotid aneurysm has been reported and is technically feasible, simultaneous endonasal pituitary adenoma resection and aneurysm has not been performed to the best of our knowledge.<sup>29</sup> Additionally, a recent review of endonasal aneurysm clipping demonstrated significantly higher rates of complications compared with open clipping and endovascular management.<sup>30</sup> In our opinion, consideration of endoscopic endonasal clipping of an aneurysm during pituitary adenoma resection is best reserved for emergency management of inadvertent intraoperative aneurysmal rupture encountered during the tumor resection. In the event that an unruptured aneurysm is unexpectedly discovered during pituitary adenoma resection, due to the potential for catastrophic

hemorrhagic complications, we recommend that subtotal tumor resection to be performed without perturbation of the aneurysm. Subsequent definitive aneurysm therapy may then be pursued followed by delayed reintervention for the adenoma if clinically indicated.

As an additional point of consideration, surgical reconstruction of the skull base defect after adenoma resection by use of a nasoseptal flap may warranted to provide long-term protection of the aneurysm from inadvertent injury from subsequent interventions, such as nasogastric tube placement or to provide an additional layer of coverage, to the aneurysm wall in cases of stereotactic radiosurgery is anticipated.<sup>30,31</sup>

## Conclusion

This case report and systematic review suggests that concomitant treatment of cerebral aneurysms and pituitary adenomas requires knowledge of up-to-date surgical and endovascular options for each pathology, as well as careful consideration of the timing and sequence of intervention.

### Ethics Statement

Michael Karsy reports disclosure with Cyrus Surgical (part owner) and Thieme Medical Publishing (royalties).

### Funding

Publication made possible in part by support from the Thomas Jefferson University Open Access Fund.

### Conflict of Interest

None declared.

## References

- Ezzat S, Asa SL, Couldwell WT, et al. The prevalence of pituitary adenomas: a systematic review. *Cancer* 2004;101(03):613–619
- Freda PU, Beckers AM, Katznelson L, et al; Endocrine Society. Pituitary incidentaloma: an endocrine society clinical practice guideline. *J Clin Endocrinol Metab* 2011;96(04):894–904
- Aghi MK, Chen CC, Fleseriu M, et al. Congress of neurological surgeons systematic review and evidence-based guidelines on the management of patients with nonfunctioning pituitary adenomas: executive summary. *Neurosurgery* 2016;79(04):521–523
- Chanson P, Raverot G, Castinetti F, Cortet-Rudelli C, Galland F, Salenave S French Endocrinology Society non-functioning pituitary adenoma work-group. Management of clinically non-functioning pituitary adenoma. *Ann Endocrinol (Paris)* 2015;76(03):239–247
- Seinfeld J, Karim S. Cavernous sinus aneurysm. In: StatPearls. StatPearls Publishing; Treasure Island, FL 2020
- Oh MC, Kim EH, Kim SH. Coexistence of intracranial aneurysm in 800 patients with surgically confirmed pituitary adenoma. *J Neurosurg* 2012;116(05):942–947
- Pant B, Arita K, Kurisu K, Tominaga A, Eguchi K, Uozumi T. Incidence of intracranial aneurysm associated with pituitary adenoma. *Neurosurg Rev* 1997;20(01):13–17
- Farrell CJ, Nyquist GG, Farag AA, Rosen MR, Evans JJ. Principles of pituitary surgery. *Otolaryngol Clin North Am* 2016;49(01):95–106
- Hanak BW, Zada G, Nayar VV, et al. Cerebral aneurysms with intrasellar extension: a systematic review of clinical, anatomical, and treatment characteristics. *J Neurosurg* 2012;116(01):164–178
- Choi HS, Kim MS, Jung YJ, Kim OL. Incidental superior hypophyseal artery aneurysm embedded within pituitary adenoma. *J Korean Neurosurg Soc* 2013;54(03):250–252
- Habibi Z, Miri SM, Sheikhezadei A. Pituitary macroadenoma coexistent with a posterior circulation aneurysm leading to subarachnoidal hemorrhage during transsphenoidal surgery. *Turk Neurosurg* 2015;25(03):469–474
- Peng Z, Tian D, Wang H, et al. Epistaxis and pituitary apoplexy due to ruptured internal carotid artery aneurysm embedded within pituitary adenoma. *Int J Clin Exp Pathol* 2015;8(11):14189–14197
- Raymond J, Hardy J, Czepko R, Roy D. Arterial injuries in transsphenoidal surgery for pituitary adenoma; the role of angiography and endovascular treatment. *AJNR Am J Neuroradiol* 1997;18(04):655–665
- Kino H, Ito Y, Akutsu H, et al. Combined endoscopic endonasal and bilateral subfrontal approach for a nonfunctioning pituitary adenoma associated with an internal carotid artery-superior hypophyseal artery aneurysm. *World Neurosurg* 2020;134:297–301
- Hori T, Muraoka K, Hokama Y, Takami M, Saito Y. A growth-hormone-producing pituitary adenoma and an internal carotid artery aneurysm. *Surg Neurol* 1982;18(02):108–111
- Matsuyama T, Masuda A. A rare case of infraclinoid aneurysm accompanied with pituitary adenoma extending over the extrasellar space [in Japanese]. *No Shinkei Geka* 1993;21(02):171–175
- Molyneux A, Kerr R, Stratton I, et al; International Subarachnoid Aneurysm Trial (ISAT) Collaborative Group. International Subarachnoid Aneurysm Trial (ISAT) of neurosurgical clipping versus endovascular coiling in 2143 patients with ruptured intracranial aneurysms: a randomised trial. *Lancet* 2002;360(9342):1267–1274
- Yamada S, Yamada SM, Hirohata T, et al. Endoscopic extracapsular removal of pituitary adenoma: the importance of pretreatment of an adjacent unruptured internal carotid artery aneurysm. *Case Rep Neurol Med* 2012;2012:891847
- Chalouhi N, Tjoumakaris S, Starke RM, et al. Comparison of flow diversion and coiling in large unruptured intracranial saccular aneurysms. *Stroke* 2013;44(08):2150–2154
- Saber H, Kherallah RY, Hadied MO, Kazemlou S, Chamiraju P, Narayanan S. Antiplatelet therapy and the risk of ischemic and hemorrhagic complications associated with pipeline embolization of cerebral aneurysms: a systematic review and pooled analysis. *J Neurointerv Surg* 2019;11(04):362–366
- Stiebel-Kalish H, Kalish Y, Bar-On RH, et al. Presentation, natural history, and management of carotid cavernous aneurysms. *Neurosurgery* 2005;57(05):850–857, discussion 850–857
- Salpietro FM, Longo M, Alafaci C, Gervasio O, Tomasello F. Coexisting pituitary tumour and intracavernous asymptomatic aneurysm: management implications. *Acta Neurochir (Wien)* 1997;139(08):791–792
- Sade B, Mohr G, Tampieri D, Rizzo A. Intrasellar aneurysm and a growth hormone-secreting pituitary macroadenoma. Case report. *J Neurosurg* 2004;100(03):557–559
- Wang CS, Yeh TC, Wu TC, Yeh CH. Pituitary macroadenoma coexistent with supraclinoid internal carotid artery cerebral aneurysm: a case report and review of the literature. *Cases J* 2009;2:6459
- Yu K, Herwadkar A, Kearney T, Gnanalingham KK. Pituitary adenoma and incidental superior hypophyseal aneurysm. *Br J Neurosurg* 2011;25(03):432–433
- Xia X, Ramanathan M, Orr BA, et al. Expanded endonasal endoscopic approach for resection of a growth hormone-secreting pituitary macroadenoma coexistent with a cavernous carotid artery aneurysm. *J Clin Neurosci* 2012;19(10):1437–1441
- Yang MY, Chen C, Shen CC. Cavernous aneurysm and pituitary adenoma: management of dual intrasellar lesions. *J Clin Neurosci* 2005;12(04):477–481

- 28 Chuang CC, Chen YL, Pai PC. A giant intracavernous carotid artery aneurysm embedded in pituitary macroadenoma presenting with pituitary apoplexy. *Cerebrovasc Dis* 2006;21(1,2):142–144
- 29 Xiao LM, Tang B, Xie SH, et al. Endoscopic endonasal clipping of anterior circulation aneurysm: surgical techniques and results. *World Neurosurg* 2018;115:e33–e44
- 30 Martinez-Perez R, Hardesty DA, Silveira-Bertazzo G, Albonette-Felicio T, Carrau RL, Prevedello DM. Safety and effectiveness of endoscopic endonasal intracranial aneurysm clipping: a systematic review. *Neurosurg Rev* 2021;44(02):889–896
- 31 Ryu G, So YK, Seo MY, et al. Using the nasoseptal flap for reconstruction after endoscopic debridement of radionecrosis in nasopharyngeal carcinoma. *Am J Rhinol Allergy* 2018;32(01):61–65
- 32 Imamura J, Okuzono T, Okuzono Y. Fatal epistaxis caused by rupture of an intratumoral aneurysm enclosed by a large prolactinoma—case report. *Neurol Med Chir (Tokyo)* 1998;38(10):654–656
- 33 Ohki M, Sato K, Tuchiya D, et al. A case of TSH-secreting pituitary adenoma associated with an unruptured aneurysm: successful treatment by two-stage operation and gamma-knife [in Japanese]. *No To Shinkei* 1999;51(10):895–899
- 34 Curto L, Squadrito S, Almoto B, et al. MRI finding of simultaneous coexistence of growth hormone-secreting pituitary adenoma with intracranial meningioma and carotid artery aneurysms: report of a case. *Pituitary* 2007;10(03):299–305
- 35 Seda L Jr., Cukiert A, Nogueira KC, Huayllas MK, Liberman B. Intracellular internal carotid aneurysm coexisting with GH-secreting pituitary adenoma in an acromegalic patient. *Arq Neuropsiquiatr* 2008;66(01):99–100
- 36 Soni A, De Silva SR, Allen K, Byrne JV, Cudlip S, Wass JA. A case of macroprolactinoma encasing an internal carotid artery aneurysm, presenting as pituitary apoplexy. *Pituitary* 2008;11(03):307–311
- 37 Khalsa SS, Hollon TC, Shastri R, Trobe JD, Gemmete JJ, Pandey AS. Spontaneous subarachnoid hemorrhage due to ruptured cavernous internal carotid artery aneurysm after medical prolactinoma treatment. *BMJ Case Rep* 2016;2016:2016
- 38 Khachatryan T, Khachatryan M, Fanarjyan R, Grigoryan M, Grigorian A. Enlargement of an incidental internal carotid artery aneurysm embedded in pituitary adenoma associated with medical shrinkage of the tumor: Case report. *Surg Neurol Int* 2018;9:30