



Short-Term Evaluation of Prosthetic Rehabilitation of Thin Wiry Ridge by Ridge Splitting and Simultaneous Implants Placement: Non-randomized Control Trial

Mohamed Y. Sharaf¹ Asharf Email Eskander² Ahmed Ibrahim Elbakery³

¹Department of Prosthodontics, Faculty of Dentistry, University of Menoufia, Menoufia, Egypt

²Department of Prosthodontics, Faculty of Dentistry, University of Cairo, Cairo, Egypt

³Department of Prosthodontics, Faculty of Dentistry, University of Ahram Canadian, Cairo, Egypt

Address for correspondence Mohamed Y. Sharaf, DDS, MSc, PhD, Department of Prosthodontics, Faculty of Dentistry, University of Menoufia, Menoufia, 32511, Egypt (e-mail: dent_1983@yahoo.com; mohamedsharaf@dent.bsu.edu.eg).

Eur J Dent 2022;16:414–423.

Abstract

Objective This article evaluates the success of prosthetic rehabilitation of thin wiry ridge and implants placed simultaneously in splitted ridge both clinically and radiographically.

Materials and Methods Twenty-one participants were enrolled of which 13 patients (8 females and 5 males) were suffering from maxillary ridge atrophy and 8 patients (5 females and 3 males) had mandibular ridge atrophy; a total of 42 implants were performed using the ridge expansion technique. The expansion was performed using the conventional disk technique, piezoelectric corticotomy, and self-threading expanders. Implants were placed and loaded with fixed partial denture after 4 months for the mandible and 6 months for the maxilla. Implant stability quotient (ISQ) was measured at T0 (implant placement) and TL (loading). Crestal bone levels were measured at different times: T0, TL, and T12 (12 months). Evaluation of prosthetic and surgical complications was carried out. Data were analyzed and compared using analysis of variance and paired *t*-tests at a significance level of 5%.

Results All implants met the criteria for success. All implants showed a higher mean bone loss from T0 to TL (1.259 ± 0.3020) than from TL to T12 (0.505 ± 0.163) with a statistically significant difference ($p < 0.0001$). ISQ values sharply increased at the time of loading (72.52 ± 2.734) than at implant insertion (44.5 ± 4.062) with a significant difference ($p < 0.0001$). Minor prosthetic and surgical complications were reported.

Conclusion The results from this study support the efficacy of prosthetic rehabilitation of thin wiry ridge using split ridge technique and the success of implants placed simultaneously in splitted ridge.

Keywords

- ▶ implant
- ▶ knife-edge ridge
- ▶ ridge expansion
- ▶ piezoelectric
- ▶ implant-supported prosthesis
- ▶ prosthetic complications

Introduction

Prosthetic rehabilitation of maxillary and mandibular thin partially edentulous ridge areas represents a challenging

procedure that is difficult to be restored by removable prosthesis, tooth-supported fixed partial dentures, and implant-supported prosthesis. Increasing the ridge width could be of value in improving prosthetic rehabilitation. Ridge

published online
December 4, 2021

DOI <https://doi.org/10.1055/s-0041-1736292>.
ISSN 1305-7456.

© 2021. The Author(s).

This is an open access article published by Thieme under the terms of the Creative Commons Attribution License, permitting unrestricted use, distribution, and reproduction so long as the original work is properly cited. (<https://creativecommons.org/licenses/by/4.0/>)

Thieme Medical and Scientific Publishers Pvt. Ltd., A-12, 2nd Floor, Sector 2, Noida-201301 UP, India

expansion techniques of thin ridges were used as a form of preprosthetic surgery for improving the support of partial and complete dentures. However, with the introduction of osseointegration concepts and implants, ridge expansion techniques became highly recommended.¹

In general, in order to ensure a successful outcome of implants, a minimum thickness of 1 to 1.5 mm of bone should be present on both buccal and lingual/palatal aspects of the implant(s), that is, a minimum of 6 to 7 mm bone width is required for placement of an implant with a diameter of 3.5 to 4 mm.²⁻⁴ Narrow alveolar ridges remain a severe challenge for placement of implants using the prosthetic-driven concept rather than bone-driven one for successful prosthetic rehabilitation regarding both the function and esthetics.^{5,6}

Several approved techniques were introduced to overcome narrow ridge width, including onlay bone grafts, horizontal guided bone regeneration, alveolar ridge expansion, and alveolar ridge splitting of the edentulous ridge.^{2,7,8} The principal disadvantage of onlay bone grafts is the invasiveness because of the technique of bone harvesting from intraoral or extraoral sites, which increase the morbidity with the risk of bone graft resorption.^{9,10} The problems of normal guided bone regeneration include the risk of membrane exposure, infection, and unpredictable rate of bone resorption after the reconstructive, regenerative procedures and implant placement.^{11,12} Also, the alveolar ridge expansion technique provides a gradual increase of the ridge width and allows positioning of implants simultaneously, thus significantly reducing treatment time. However, it is recommended only for soft bone quality (D3 and D4).¹³⁻¹⁶ Alveolar ridge splitting/expansion technique (ARST) involves splitting the alveolar ridge vertically with displacing buccal and lingual or palatal plates both in the maxilla and the mandible, creating a middle gap, usually occupied mostly by the inserted implants.^{2,17,18} ARST with simultaneous placement of the dental implants arose a great interest in the last years because of the reduction of morbidity (no bone harvesting, no risk of membrane exposure, no risk of graft loss) and decreasing the postoperative swelling and pain, increasing the patient cooperation for the surgery, eliminating the need for a second surgical site as well as a second surgery, reduce the treatment cost, and reduce the total treatment time.^{2,19,20}

Several materials are used for prosthetic part construction. Trilor disk is one of the computer-aided design and computer-aided manufacturing systems. It is a fiberglass disc with a unique weave and epoxy resin that offers high performance. Trilor (fiber-reinforced composites) is a new technopolymer consisting of a thermo-hardening resin and a multidirectional reinforced with multidirectional fiberglass, which is used in racing cars, airplanes, and many other fields where the demand for high toughness, low weight, and excellent resistance to deformation are essential needs. Trilor is characterized by flexural resistance of 540 MPa, flexural modulus 26 GPa, and density 1.8 g/cm³.²¹

This study aimed to evaluate the success of the prosthetic rehabilitation of thin wiry ridge and evaluate implants placed simultaneously in splitted ridge both clinically and radiographically.

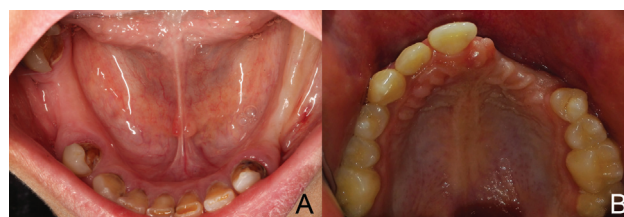


Fig. 1 Preoperative view of both the maxilla and mandible.

Material and Methods

Patient Selection

Twenty-one participants were enrolled of which 13 patients (8 females and 5 males) were suffering from maxillary ridge atrophy and 8 patients (5 females and 3 males) had mandibular ridge atrophy with an average age of 20 to 45 years (→**Fig. 1**) according to the following criteria: participants with a partially edentulous ridge of 2 to 4 mm of initial alveolar crest width and sufficient height of at least 8 mm from the crest of the alveolar ridge to the vital neighboring structures and good oral hygiene. In contrast, the exclusion criteria were patients who smoke more than 10 cigarettes per day and patients with any systemic disease which directly affects the bone metabolism and healing such as diabetes mellitus, osteoporosis, and periodontal disease. All included participants agreed to have the treatment and signed the informed consent. The study was approved by the Ethical Committee and adhered to the principles of the Declaration of Helsinki.

Cone beam computed tomography was carried out for each patient to check the bone width, available bone height, and determine the proposed implant site (→**Fig. 2**). Alginate impressions were made, and a diagnostic wax-up was made on the study cast to fabricate a vacuum stent to locate the proposed osteotomy sites during surgery.

Surgical Procedures

The surgical guide was disinfected by immersing it in 2% glutaraldehyde solution for 15 minutes. Patients received amoxicillin 2 g two hours before surgery. Local anesthesia was given in the proposed implant sites. The surgical guide was placed, and an explorer was used to mark the proposed implant sites. A lingual or palatal incision was made extending 6 to 8 mm mesial and distal beyond the marked implant site. The incision may extend to include the interdental papilla for the adjacent natural teeth in some cases, and a vertical incision may be made according to each case. A split-thickness flap was reflected. The surgical guide was placed again, and a round surgical bur was used to mark the proposed sites for implant placement on the bony ridge.

The crestal osteotomy was made using the disk saw kit (small disk, large disk, mandrel and expanders, and finger ratchet) (Precision Dental). The small disk (6 mm diameter) was mounted within a straight handpiece and held perpendicular to the ridge, and rotated under a copious amount of coolant for making the initial osteotomy of 3-mm depth; then, the disk was replaced with larger disks 10.14 mm

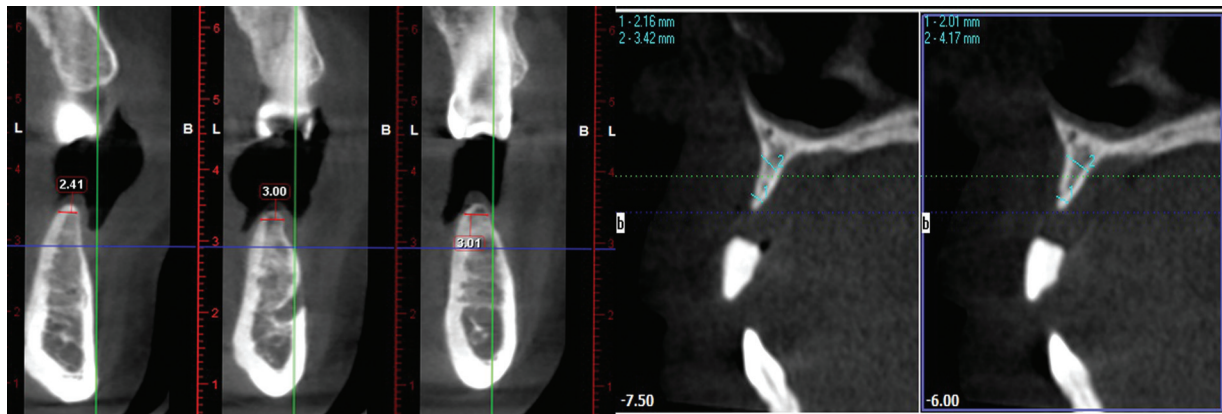


Fig. 2 Cross-section of the proposed implant site.

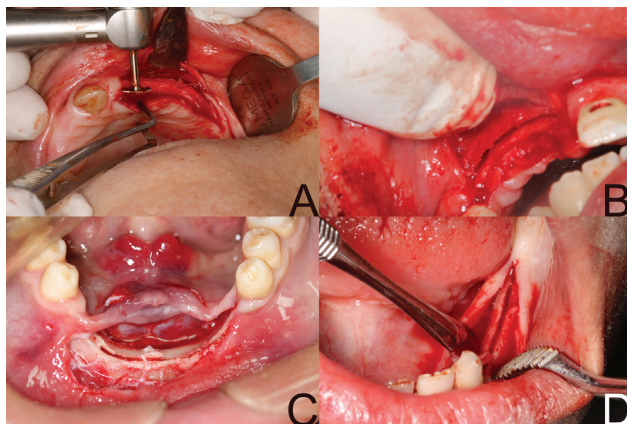


Fig. 3 The splitted ridge.

(→**Fig. 3**). Ultrasonic flat chisel was used to cut the area adjacent to the natural teeth and deepen the sagittal osteotomy as it should extend 5 to 7 mm in depth and 5 mm beyond the proposed implant site and just away from the adjacent natural tooth by 1 mm.

Once the osteotomies were completed, one or more extension crest devices (ECDs) (ECD consists of two surgical steel arms hinged and a transversal screw which allows a progressive activation of the device). Every complete screw turn corresponds to an activation of 0.5 mm. The maximum expansion obtainable with extension crests is 5 mm (Precision Dental), and were placed through the crestal osteotomy between the buccal and palatal/lingual plates according to the extension of the osteotomy and bone density (→**Fig. 4A**).

After each turn, a periodic pause allows the viscoelastic bone to adapt to the expansion to avoid fracture of the thin buccal plate of bone where the number of activation cycles is correlated to both bone density and surgical needs. After the required alveolar crest expansion is obtained, basal bone drilling was performed by the pilot drill (a double-level implant site preparation was performed at the basal bone level). The screw expanders (Ridge expander kit, Dentium Co.) of sequential diameters (2.3, 2.8, and 3.4 mm) were mounted into the finger ratchet and introduced to expand their corresponding future implant site slowly as every

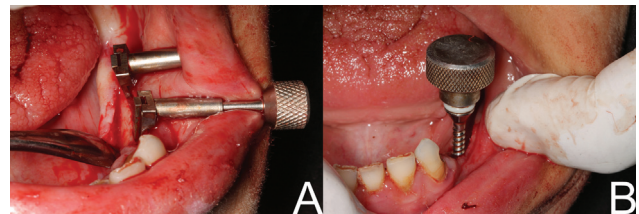


Fig. 4 (A) Use of extension crest device. (B) Use ridge expanders.

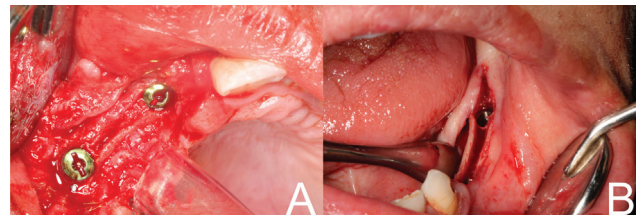


Fig. 5 (A) Implants are flushed with crest. (B) Implants are placed subcrestal.

2-mm inserted of expander drill was usually followed by 15 to 20 seconds of periodic pause giving the bone sufficient time for gradual expansion, and then replaced with successive expanders of a larger diameter till the proposed final implant size was achieved (→**Fig. 4B**). As the last expander was removed, the implant was placed immediately to prevent the collapse of the expanded bone. The implant was installed in the osteotomy site and rotated gradually subcrestal as much as we can or flushing with the bone (→**Fig. 5**) (insertion torque 25 N/cm²), then another implant was placed parallel to the first one. The flap was repositioned and sutured.

Postoperative care included cold packs applied for 20 minutes every hour for 6 hours postoperatively. The patient was kept on a soft diet for the first 48 hours. The patient was advised to rinse with chlorhexidine 0.12% twice a day for 10 days till suture removal. At least 4 months were needed for bone healing in the mandible and 6 months for the maxillary arch.

Prosthetic Procedures

Removable partial dentures were not allowed to be used during the first month in the treated areas.¹⁹ All implants

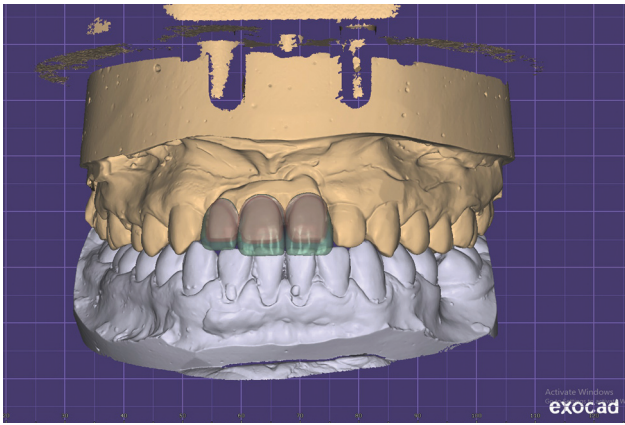


Fig. 6 Designing of the Trilor fixed partial denture.

were loaded with a fixed prosthesis (cement-retained). Healing abutments were placed, and the soft tissue was allowed to heal for 1 week. Healing abutments were replaced by the impression transfer (closed tray technique), and the final impression was made using a rubber base (ZetaPlus, Zhermack SpA). The impression transfers were unscrewed from the implants and connected to the implant analog, and placed within the impression. Tissue mimic material was applied and the cast was poured by extra hard stone. The final abutment replaced the impression transfer.

For Trilor fixed partial denture, the cast was scanned by a laboratory scanner to obtain a Standard Tessellation Language file. Design of fixed partial denture was carried out on dental software (Exocad, Darmstadt, Germany) (► **Fig. 6**). After finishing the design, the framework was printed by a three-dimensional printer (Mogassam Co. LLC) and tried intraoral for accuracy, adaptation, marginal fit, and esthetics. The framework was milled from a Trilor disk of 98.5*23 mm (Trilor, Bioloren), and veneering material was made from visio.lign and crea.lign (Bredent UK) and tried intraoral for any modifications. Cementation of the final prosthesis was done using temporary cement (Prevest Denpro Zinconol Dental Cement) for 2 weeks and later the prosthesis was removed and the abutment screw retightened. Finally, the prosthesis was cemented by glass ionomer (Medicem Promedica Dental Material GmbH) (► **Fig. 7A, -7B**).

For porcelain fused to metal (PFM) fixed partial denture wax pattern was carried out. Investing and casting of the wax pattern was done. The metal framework of the fixed partial denture was checked for accuracy, adaptation, and marginal fit, then the firing of the porcelain was done. Cementation of the final prosthesis was done using temporary cement (Prevest Denpro Zinconol Dental Cement) for 2 weeks and later the prosthesis was removed and the abutment screw retightened. Finally, the prosthesis is cemented by glass ionomer (Medicem Promedica Dental Material GmbH) (► **Fig. 7C, -7D**).

Evaluations

Implant success rate involving the following clinical parameters for success was suggested by Albrektsson et al.²²



Fig. 7 Final prosthesis cemented intraoral.

Implant stability quotient (ISQ) was assessed by resonance frequency analysis (RFA) using the Osstell apparatus (Osstell; Osstell AB). SmartPegs were attached to the implants. For each implant, four readings were taken at the buccal, lingual, mesial, and distal sides at the time of implant placement and loading. The average ISQ values were calculated for all surfaces.^{23,24}

Radiographic examination: For ensuring standardization of measurements, digital radiographs were taken using a long-cone paralleling technique at the time of implant insertion (T0), loading (TL), and 12 months (T12) after prosthesis insertion. For each image, the distance from the implant platform (A point) to the crestal bone level (B point) was calculated (in mm) using the measuring tool of the software to indicate the vertical bone level (X) in mm. X measurements were calibrated based on the known implant length to detect magnification errors. Alveolar bone loss (ABL) was calculated by subtracting X at TL and T12 from X at T0 and TL, respectively. ABL value was measured at the mesial and distal surfaces of each implant, and the mean value was calculated.

Prosthetic evaluation: During follow-up for 1 year, the status of the prostheses was screened for the presence of any complication (abutment screw loosening, abutment screw fracture, fracture of veneer material, or loss of retention and decementation).

Results

The data were collected for all participants during follow-up with no dropout. All implants (► **Table 1**) met the modified Albrektsson et al criteria for success.²²

Implants stability assessment: There was an increase in ISQ from implant placement till implant loading for all implants

Table 1 Implant dimension and position

	3.6*10	3.6*8	Total
Maxillary	23	3	26
Mandibular	16	—	16
Total	39	3	42

with statistically significant difference ($p < 0.0001$) between values at insertion (44.5 ± 4.062) and loading (72.52 ± 2.734) as well as a statistically significant increase ($p < 0.0001$, $p < .0017$) was observed in ISQ at insertion and loading for anterior implants in the mandible (49 ± 2.7688 , 74.83 ± 1.95) than anterior implants in the maxilla (40.75 ± 2.358 , 71.25 ± 2.106), respectively (► **Tables 2** and **3**). A statistically significant increase ($p < 0.0047$, $p < 0.035$) was observed in ISQ at insertion and loading for posterior implants in the mandible (47.7 ± 1.552 , 74.1 ± 2.773) than posterior implants in the maxilla (44.6 ± 2.615 , 71.6 ± 2.107), respectively (► **Tables 2** and **3**), and also a statistically significant increase ($p < 0.0001$, $p < 0.0002$) was observed in ISQ at insertion and loading for implants in the mandible (48.18 ± 2.185 , 74.37 ± 2.521) than implants in the maxilla (42.23 ± 3.0922 , 71.38 ± 2.113), respectively (► **Tables 2** and **3**). There is a statistical significance difference ($p < 0.0087$) between anterior implants (43 ± 4.431) and posterior implants (46.15 ± 2.650) at insertion (► **Tables 2** and **3**). A statistically significant increase ($p < 0.0087$, $p < 0.0266$) was observed in ISQ at insertion for posterior implants (46.15 ± 2.650) than anterior implants (43 ± 4.431) as well as between implants in male (46.75 ± 4.057) and implants in female (43.88 ± 3.84), respectively (► **Tables 2** and **3**).

ABL assessment: Thirty implants were placed subosseous while 12 placed flushing with crestal bone margins. All implants showed a higher mean bone loss from T0 to T1 (1.259 ± 0.3020) than from T1 to T12 (0.505 ± 0.163) with a statistically significant difference ($p < 0.0001$). A statistically significant increase ($p < 0.0306$) in the mean of ABL was observed in anterior implants in the maxilla (0.618 ± 0.120) than anterior implants in the mandible (0.2466 ± 0.634) from T1 to T12 (► **Tables 4** and **5**). A statistically significant increase ($p < 0.0001$) in the mean of ABL was observed for implants in the maxilla (0.581 ± 0.123) than implants in the mandible (0.382 ± 0.139) from T1 to T12 (► **Tables 4** and **5**). A statistically significant increase ($p < 0.0017$) in the mean of ABL was observed for all anterior implants (1.39 ± 0.321) than all posterior implants (1.115 ± 0.13982) from T0 to T1 (► **Tables 4** and **5**). A statistically significant increase ($p < 0.0045$) in the mean of ABL was observed for implants in the female participants (0.583 ± 0.170) than male participants (0.435 ± 0.145) from T1 to T12 (► **Tables 4** and **5**).

Prosthetic complications: Implant-supported prosthesis was involved in this study. Prosthetic complications were loosening of screw/abutment in 8 patients (38%) within the first 6 months of prosthetic service and 2 patients (9.5%) at second 6 months, while no ceramic fracture, no framework/occlusal material fracture, no screw fracture, and decementation occurred in 1 patient (4.7%).

Surgical complications: Buccal plates cracked at two implant sites (4.7%) in the mandible. Swelling and edema were observed postoperatively in 6 cases (28.5%) and disappeared within 3 days from surgery and finally transient paresthesia (1 case: 4.7%) and disappeared within 2 weeks.

Table 2 The mean and standard deviation of Osstell reading (ISQ) at implant placement and loading

Place of implants	Anterior maxilla		Posterior maxilla		Total maxilla		Anterior mandible		Posterior mandible		Total mandible		Total anterior		Total posterior		Male		Female	
	Mean	SD	Mean	SD	Mean	SD	Mean	SD	Mean	SD	Mean	SD	Mean	SD	Mean	SD	Mean	SD	Mean	SD
No of implants	16		10		26		6		10		6		22		20		16		26	
Installation	40.75	2.3584953	44.6	2.6153394	42.23	3.0922694	49	2.7688746	47.7	1.5524175	48.18	2.1857136	43	4.4312937	46.15	2.6509432	46.75	4.057	43.88	3.84
Loading	71.25	2.106	71.6	2.107	71.38	2.113	74.83	1.95	74.1	2.773	74.37	2.521	72.22	2.609	72.85	2.761	73.125	2.77	71.73	2.272

Abbreviations: ISQ, implant stability quotient; SD, standard deviation.

^aSignificant at $p \leq 0.05$.

Table 3 The comparison of Osstell reading (ISQ) at implant placement and loading

	Anterior maxilla vs. ant mandible				Posterior maxilla vs. post mandible				Maxilla vs. mandible				Total anterior vs. total posterior				Total implants in male vs. females			
	Difference	Standard error	95% CI	p-Value	Difference	Standard error	95% CI	p-Value	Difference	Standard error	95% CI	p-Value	Difference	Standard error	95% CI	p-Value	Difference	Standard error	95% CI	p-Value
Installation	8.250	1.181	10.7134 to 5.7866	0.0001 ^a	3.1	0.962	1.0797 to 5.1203	0.0047 ^a	5.950	0.885	7.7386 to 4.1614	0.0001 ^a	3.15	1.141	0.8436 to 5.4564	0.0087 ^a	2.870	1.246	5.3892 to -0.3508	0.0266+
Loading	3.580	0.990	1.5148 to 5.6452	0.0017 ^a	2.500	1.101	0.1878 to 4.8122	0.0356 ^a	2.990	0.723	1.5293 to 4.4507	0.0002 ^a	0.630	0.829	1.0449 to 2.3049	0.4516	1.395	0.786	2.9834 to 0.1934	0.0835

Abbreviations: CI, confidence interval; ISQ, implant stability quotient.

^aSignificant at $p \leq 0.05$.

Table 4 The mean and standard deviation of alveolar bone loss at implant loading and after 1 year

Implants no.	Anterior maxilla			Posterior maxilla			Total maxilla			Anterior mandible			Posterior mandible			Total mandible			Total anterior			Total posterior			Female			Male		
	Mean	SD	SD	Mean	SD	SD	Mean	SD	SD	Mean	SD	SD	Mean	SD	SD	Mean	SD	SD	Mean	SD	SD	Mean	SD	SD	Mean	SD	SD			
16			10			26			6			10			16			22			20			26			16			
T0/T1	1.35625	0.351	1.105	0.169	1.2596154	0.31956077	1.48333333	0.195	1.259375	0.26053955	1.39	0.321797	1.115	0.1824	1.184	0.211	1.228	0.407	0.493	0.107	0.583	0.170	0.435	0.145						
Loading	0.618125	0.120	0.541	0.0858	0.58115385	0.12336085	0.24666667	0.634	0.3825	0.13908181	0.516	0.1975391	0.493	0.107	0.583	0.170	0.435	0.145												

Abbreviation: SD, standard deviation.

^aSignificant at $p \leq 0.05$.

Table 5 The comparison of alveolar bone loss at implant loading and after 1 year

Anterior maxilla vs. anterior mandible			Posterior maxilla vs. posterior mandible			Maxilla vs. mandible			Total anterior vs. total posterior			Male vs. female									
Difference	Standard error	95% CI	p-Value	Difference	Standard error	95% CI	p-Value	Difference	Standard error	95% CI	p-Value	Difference	Standard error	95% CI	p-Value						
0.127	0.153	0.1917 to 0.4459	0.4155	0.020	0.081	0.1504 to 0.1904	0.808	0.00	0.095	0.1921 to 0.1916	0.998	0.275	0.082	-0.4404 to -0.1096	0.0017	0.044	0.110	0.110	0.110	-0.1787 to 0.2667	0.6917
0.371	0.160	0.7046 to -0.0383	0.0306 ^a	0.077	0.043	0.1666 to 0.0126	0.0877	0.199	0.041	0.2818 to -0.1155	0.0001 ^a	0.023	0.050	0.1235 to 0.0775	0.646	0.148	0.049	0.049	0.049	-0.2474 to -0.0486	0.0045

Abbreviation: CI, confidence interval.
^aSignificant at $p \leq 0.05$.

Discussion

ARST represents an effective and validated form of expansion technique for narrow ridges with simultaneous implants placement with a survival rate of 97.4 to 100%, and the success rates of implants are comparable to implants placed in bone without ARST which matches with our study success and survival rate.^{9,23-26}

Classic ridge-splitting procedures involve razor-sharp bone chisels, rotating, oscillating saws, or saw disc. The use of bone chisel traumatizes the bone and could stress the patient during surgery, it is time-consuming and require complex technical skills to be managed efficiently. Rotating and oscillating instruments are safer, less threatening for the patient, better control during cutting along a narrow alveolar ridge, and appear less traumatic to the bone. Additionally, less bone is lost because the micro-saw creates much thinner cuts than conventional burs while reducing the risk of encroaching the gingiva, the lips, or the tongue, limiting their accessibility and complicating the procedure.^{6,10,16} Ultrasonic device produces easier, safer, and more precise cut. It allows curved cuts that are impossible with rotator or oscillating saws,²⁷ providing good visibility in the surgical field, reducing the psychological stresses on patients under local anesthesia, with no risk of injury to soft tissue, and also reduce the risk of complications in the treatment of extremely atrophic crests; however, its time consuming.^{6,10,27-32} Thus, the combination of using rotating saws and piezoelectric instrument facilitates the ARST procedures and gain the advantages of both instruments.

A systematic review by Milinkovic and Cordaro and a meta-analysis by Elnayef et al evaluated the different alveolar bone augmentation procedures for implant placement. They found that the alveolar crest-split technique had minimal technical complications and a high implant survival rate.^{33,34} While the main complication of ARST was reported to fracture the buccal bone, which is increased with the narrower ridge of less than 1 mm buccal and lingual cortical plates.^{12,33-36} Buccal wall fracture was reported in some studies to reach up to 14.0%.³⁵ However, in this study, no fracture occurred, only cracks appeared at the buccal plate at two implant sites in the mandible, this could be attributed to the presence of highly dense bone and little cancellous in the arch.³⁷ Decreasing the complication associated with ARST may be attributed to the distribution of expansion forces by ECD, sufficient time, and multiple pauses between each turn of the expansion device to overcome the resistance during the expansion of the buccal cortical plate, thus decreasing the risk of fracture. In addition, the minimal included ridge width was 2.0 mm at the crest of the ridge.^{2,35,38} A systematic review reported that the failure rate is more likely if implants are loaded within a period shorter than 3 months.²³ The dental implants in this study were loaded at 4 months for the mandible and 6 months for the maxilla.³⁵ Moreover, splinting of dental implants would decrease the stresses on each implant.^{20,24}

The use of a split-thickness flap was significant as the periosteum should not be stripped off from the buccal bone

plate, affecting the blood supply and allowing rapid revascularization of the expanded bony plate. The expanded segments with elevated periosteum will undergo resorption because of the lack of nourishment, particularly for the thin buccal cortex, followed by implant thread exposure.³⁹ The periosteum has another function in treating the minute fractures that might occur during the splitting procedure^{40–42} and decreasing the percentage of bone loss by 9.5% for the buccal bone plate, 7.9% for the palatal bone plate, and 3.5% for the mesiodistal bone plate as reported by Mounir et al.⁴³ While disadvantages of the partial flap are excessive bleeding, resulting in lousy visualization of the surgical sites.⁶

The use of expanders allowed blunt lateralization of the buccal cortex during expansion, thus decreasing the risk of fractures and heating during drilling. It increases bone quality surrounding the implant due to the compression of the spongiosa at the sidewalls of the osteotomy site without any bone removal.⁴³ Double-level implant site preparation allowed proper primary stability with the required expansion, which was frequently difficult to obtain with traditional split crest techniques.³⁹

With palatal or lingual incision, the buccal plate is preserved by placing the incision to the palatal or lingual sides where the cortical plates are thicker and resistant to resorption.³⁹ The extended osteotomy beyond the proposed implant site allowed the plates to expand or bow during the preparation of the osteotomy preparation and implant insertion, and periodic pauses allowed the viscoelastic bone to adapt to the expansion.⁶ The osteotomy gap was between 3 and 5 mm, which was left to be filled with the organized blood clot to be replaced by woven bone, allowing normal wound healing resembling an extraction socket and fracture repair that heal by secondary intension without the need for bone grafting or using guided regenerative techniques.^{6,44,45}

The use of RFA was beneficial in providing clinical evidence about implant-bone interface during the phases of treatment,³⁷ where the acceptable stability range, based on many studies made with RFA, lies between 55 and 85 ISQ with an average ISQ level of 70.^{46,47} In the present study, the mean ISQ value at insertion was 44.5 ± 4.062 and loading was 72.52 ± 2.734 . These results indicated a valuable improvement of the implant's stability which is the main goal for achieving successful osseointegration. The lower ISQ values measured at implant insertion explain the surrounding area where implants were placed in a gap filled with blood clot and minimal implant surface being anchored in bone; later on, a significant increase in the ISQ values was observed at 4 to 6 months, denoting the ability to load implants.⁴⁸ Several studies have demonstrated the correlation between bone quality and ISQ values, and it appears that the stiffness of the implant-bone interface increases as the peri-implant bone becomes denser during the healing and remodeling process.^{33–35,48}

The reported success rates of implants placed with ARST were comparable with those placed in bone without ARST. However, the few available and included data indicated that a

slightly more pronounced marginal bone loss could be expected than implants placed in bone without ARST.³ The crestal bone loss that occurs secondary to the ridge-splitting technique is a serious obstacle to the success of the operation and remains the challenging feature of that procedure,⁴³ which was reflected by the radiographic results as most of the ABL occurred at first 4 to 6 months before loading regardless the anatomical position of placed implants or the quality of bone. In this study, placing most of the implants (30 implants) subossous help decreasing the postoperative ABL as the ABL was 1.259 ± 0.3020 mm. However, since some implants were initially placed subcrestal, the net final ABL from the implant platform was 0.775 ± 0.3185 mm, where the average reported crestal bone loss was between 0.8 and 2.0 mm, and in a study by González-García et al the mean ABL was 0.542 mm.^{48,49} Nevertheless, after loading, the only significant differences were between implants in the anterior maxilla and anterior mandible and between implants in the maxilla and mandible. The better quality of bone denotes less bone resorption and better implant osseointegration, as proved with implant stability by Osstell.

The main prosthetic complications of implant-supported restorations were the screw loosening, framework or occlusal material fracture, screw fracture, and decementation.⁵⁰ Although abutment screw loosening is one of the most frequent prosthetic complications that has been associated with the ARST,³⁴ a study by Garcez-Filho et al observed that 6 of 8 complications were due to abutment screw loosening.⁵¹ In this study, 8 of 9 complications were due to abutment screw loosening.

In this study, using anterior fixed partial dentures of Trilor and posterior one of PFM did not affect stress distribution and stress values at the bone tissue surrounding the implant.^{52,53} However, Türk et al mentioned that different materials transmit different stress to the underlying structures.⁵⁴

The main limitations of the present study are the small sample size and short follow-up duration as the study was continued for 12 months for serving as prosthetic abutments, which represent the least period to evaluate the implant success,²⁰ and its recommended to place grafting materials to decrease the ABL as the ABL is considered an obstacle for the success of implants in splitted ridge.

Conclusion

This study supports the efficacy of prosthetic rehabilitation of thin wiry ridge using split ridge technique and the success of implants placed simultaneously in splitted ridge.

Conflict of Interest

None declared.

References:

- 1 Tolstunov L, Hicke B. Horizontal augmentation through the ridge-split procedure: a predictable surgical modality in implant reconstruction. *J Oral Implantol* 2013;39(01):59–68

- 2 Scipioni A, Bruschi GB, Calesini G. The edentulous ridge expansion technique: a five-year study. *Int J Periodontics Restorative Dent* 1994;14(05):451–459
- 3 Bassetti MA, Bassetti RG, Bosshardt DD. The alveolar ridge splitting/expansion technique: a systematic review. *Clin Oral Implants Res* 2016;27(03):310–324
- 4 Nedir R, Bischof M, Briaux JM, Beyer S, Szmukler-Moncler S, Bernard JP. A 7-year life table analysis from a prospective study on ITI implants with special emphasis on the use of short implants. Results from a private practice. *Clin Oral Implants Res* 2004;15(02):150–157
- 5 Bidra AS. Surgical and prosthodontic consequences of inadequate treatment planning for fixed implant-supported prosthesis in the edentulous mandible. *J Oral Maxillofac Surg* 2010;68(10):2528–2536
- 6 Agrawal D, Gupta AS, Newaskar V, Gupta A, Garg S, Jain D. Narrow ridge management with ridge splitting with piezotome for implant placement: report of 2 cases. *J Indian Prosthodont Soc* 2014;14(03):305–309
- 7 Chiapasco M, Zaniboni M, Rimondini L. Dental implants placed in grafted maxillary sinuses: a retrospective analysis of clinical outcome according to the initial clinical situation and a proposal of defect classification. *Clin Oral Implants Res* 2008;19(04):416–428
- 8 Jensen SS, Terheyden H. Bone augmentation procedures in localized defects in the alveolar ridge: clinical results with different bone grafts and bone-substitute materials. *Int J Oral Maxillofac Implants* 2009;24(Suppl):218–236
- 9 Chiapasco M, Zaniboni M, Boisco M. Augmentation procedures for the rehabilitation of deficient edentulous ridges with oral implants. *Clin Oral Implants Res* 2006;17(Suppl 2):136–159
- 10 Blus C, Szmukler-Moncler S. Split-crest and immediate implant placement with ultra-sonic bone surgery: a 3-year life-table analysis with 230 treated sites. *Clin Oral Implants Res* 2006;17(06):700–707
- 11 Rasmusson L, Meredith N, Cho IH, Sennerby L. The influence of simultaneous versus delayed placement on the stability of titanium implants in onlay bone grafts. A histologic and biomechanic study in the rabbit. *Int J Oral Maxillofac Surg* 1999;28(03):224–231
- 12 Chiapasco M, Abati S, Romeo E, Vogel G. Clinical outcome of autogenous bone blocks or guided bone regeneration with e-PTFE membranes for the reconstruction of narrow edentulous ridges. *Clin Oral Implants Res* 1999;10(04):278–288
- 13 Tatum H Jr. Maxillary and sinus implant reconstructions. *Dent Clin North Am* 1986;30(02):207–229
- 14 Summers RB. The osteotome technique: part 2—the ridge expansion osteotomy (REO) procedure. *Compendium* 1994;15(04):422, 424, 426 passim, quiz 436
- 15 Vercellotti T. Piezoelectric surgery in implantology: a case report—a new piezoelectric ridge expansion technique. *Int J Periodontics Restorative Dent* 2000;20(04):358–365
- 16 Suh JJ, Shelemay A, Choi SH, Chai JK. Alveolar ridge splitting: a new microsaw technique. *Int J Periodontics Restorative Dent* 2005;25(02):165–171
- 17 Simion M, Baldoni M, Zaffe D. Jawbone enlargement using immediate implant placement associated with a split-crest technique and guided tissue regeneration. *Int J Periodontics Restorative Dent* 1992;12(06):462–473
- 18 Anitua E, Andia I, Ardanza B, Nurden P, Nurden AT. Autologous platelets as a source of proteins for healing and tissue regeneration. *Thromb Haemost* 2004;91(01):4–15
- 19 Chiapasco M, Ferrini F, Casentini P, Accardi S, Zaniboni M. Dental implants placed in expanded narrow edentulous ridges with the Extension Crest device. A 1–3-year multicenter follow-up study. *Clin Oral Implants Res* 2006;17(03):265–272
- 20 Altiparmak N, Akdeniz SS, Bayram B, Gulsever S, Uckan S. Alveolar ridge splitting versus autogenous onlay bone grafting: complications and implant survival rates. *Implant Dent* 2017;26(02):284–287
- 21 Accessed September 5, 2021 at: <https://bioloren.com/en/prodotti/trilor-en/trilor-disk/>
- 22 Albrektsson T, Zarb G, Worthington P, Eriksson AR. The long-term efficacy of currently used dental implants: a review and proposed criteria of success. *Int J Oral Maxillofac Implants* 1986;1(01):11–25
- 23 Engelke WG, Diederichs CG, Jacobs HG, Deckwer I. Alveolar reconstruction with splitting osteotomy and microfixation of implants. *Int J Oral Maxillofac Implants* 1997;12(03):310–318
- 24 Oikarinen KS, Sándor GK, Kainulainen VT, Salonen-Kemppi M. Augmentation of the narrow traumatized anterior alveolar ridge to facilitate dental implant placement. *Dent Traumatol* 2003;19(01):19–29
- 25 Sethi A, Kaus T. Maxillary ridge expansion with simultaneous implant placement: 5-year results of an ongoing clinical study. *Int J Oral Maxillofac Implants* 2000;15(04):491–499
- 26 Chiapasco M, Casentini P, Zaniboni M. Bone augmentation procedures in implant dentistry. *Int J Oral Maxillofac Implants* 2009;24(Suppl):237–259
- 27 González-García A, Diniz-Freitas M, Somoza-Martín M, García-García A. Ultrasonic osteotomy in oral surgery and implantology. *Oral Surg Oral Med Oral Pathol Oral Radiol Endod* 2009;108(03):360–367
- 28 Vercellotti T. Technological characteristics and clinical indications of piezoelectric bone surgery. *Minerva Stomatol* 2004;53(05):207–214
- 29 Vercellotti T, De Paoli S, Nevins M. The piezoelectric bony window osteotomy and sinus membrane elevation: introduction of a new technique for simplification of the sinus augmentation procedure. *Int J Periodontics Restorative Dent* 2001;21(06):561–567
- 30 Stübinger S, Stricker A, Berg BI. Piezosurgery in implant dentistry. *Clin Cosmet Investig Dent* 2015;7:115–124
- 31 Stacchi C, Vercellotti T, Torelli L, Furlan F, Di Lenarda R. Changes in implant stability using different site preparation techniques: twist drills versus piezosurgery. A single-blinded, randomized, controlled clinical trial. *Clin Implant Dent Relat Res* 2013;15(02):188–197
- 32 Anitua E, Begoña L, Orive G. Clinical evaluation of split-crest technique with ultrasonic bone surgery for narrow ridge expansion: status of soft and hard tissues and implant success. *Clin Implant Dent Relat Res* 2013;15(02):176–187
- 33 Milinkovic I, Cordaro L. Are there specific indications for the different alveolar bone augmentation procedures for implant placement? A systematic review. *Int J Oral Maxillofac Surg* 2014;43(05):606–625
- 34 Elnayef B, Monje A, Lin GH, et al. Alveolar ridge split on horizontal bone augmentation: a systematic review. *Int J Oral Maxillofac Implants* 2015;30(03):596–606
- 35 Anitua E, Alkhraisat MH. Is alveolar ridge split a risk factor for implant survival? *J Oral Maxillofac Surg* 2016;74(11):2182–2191
- 36 Ella B, Laurentjoye M, Sedarat C, Coutant JC, Masson E, Rouas A. Mandibular ridge expansion using a horizontal bone-splitting technique and synthetic bone substitute: an alternative to bone block grafting? *Int J Oral Maxillofac Implants* 2014;29(01):135–140
- 37 Sennerby L, Meredith N. Implant stability measurements using resonance frequency analysis: biological and biomechanical aspects and clinical implications. *Periodontol* 2000 2008;47:51–66
- 38 Jha N, Choi EH, Kaushik NK, Ryu JJ. Types of devices used in ridge split procedure for alveolar bone expansion: a systematic review. *PLoS One* 2017;12(07):e0180342
- 39 Cortese A, Pantaleo G, Amato M, Claudio PP. Ridge expansion by flapless split crest and immediate implant placement: evolution of the technique. *J Craniofac Surg* 2016;27(02):e123–e128

- 40 Chiapasco M, Romeo E, Vogel G. Tridimensional reconstruction of knife-edge edentulous maxillae by sinus elevation, onlay grafts, and sagittal osteotomy of the anterior maxilla: preliminary surgical and prosthetic results. *Int J Oral Maxillofac Implants* 1998;13(03):394–399
- 41 Piccinini M. Mandibular bone expansion technique in conjunction with root form implants: a case report. *J Oral Maxillofac Surg* 2009;67(09):1931–1936
- 42 Sohn DS, Lee HJ, Heo JU, Moon JW, Park IS, Romanos GE. Immediate and delayed lateral ridge expansion technique in the atrophic posterior mandibular ridge. *J Oral Maxillofac Surg* 2010;68(09):2283–2290
- 43 Mounir M, Beheiri G, El-Beialy W. Assessment of marginal bone loss using full thickness versus partial thickness flaps for alveolar ridge splitting and immediate implant placement in the anterior maxilla. *Int J Oral Maxillofac Surg* 2014;43(11):1373–1380
- 44 Abu Tair JA. Modification of mandibular ridge splitting technique for horizontal augmentation of atrophic ridges. *Ann Maxillofac Surg* 2014;4(01):19–23
- 45 Crespi R, Cappare P, Gherlone EF. Electrical mallet provides essential advantages in split-crest and immediate implant placement. *Oral Maxillofac Surg* 2014;18(01):59–64
- 46 Jamil FA, Al-Adili SS. Lateral ridge splitting (expansion) with immediate placement of endosseous dental implant using piezoelectric device: a new treatment protocol. *J Craniofac Surg* 2017;28(02):434–439
- 47 Digholkar S, Venu Madhav VN, Palaskar J. Methods to measure stability of dental implants. *Journal of Dental and Allied Sciences*. 2014;3:17–23
- 48 Nguyen VG, von Krockow N, Weigl P, Depprich R. Lateral alveolar ridge expansion in the anterior maxilla using piezoelectric surgery for immediate implant placement. *Int J Oral Maxillofac Implants* 2016;31(03):687–699
- 49 González-García R, Monje F, Moreno C. Alveolar split osteotomy for the treatment of the severe narrow ridge maxillary atrophy: a modified technique. *Int J Oral Maxillofac Surg* 2011;40(01):57–64
- 50 Tang YL, Yuan J, Song YL, Ma W, Chao X, Li DH. Ridge expansion alone or in combination with guided bone regeneration to facilitate implant placement in narrow alveolar ridges: a retrospective study. *Clin Oral Implants Res* 2015;26(02):204–211
- 51 Garcez-Filho J, Tolentino L, Sukekava F, Seabra M, Cesar-Neto JB, Araújo MG. Long-term outcomes from implants installed by using split-crest technique in posterior maxillae: 10 years of follow-up. *Clin Oral Implants Res* 2015;26(03):326–331
- 52 Stegaroiu R, Khraisat A, Nomura S, Miyakawa O. Influence of superstructure materials on strain around an implant under 2 loading conditions: a technical investigation. *Int J Oral Maxillofac Implants* 2004;19(05):735–742
- 53 Sevimay M, Usumez A, Eskitascioglu G. The influence of various occlusal materials on stresses transferred to implant-supported prostheses and supporting bone: a three-dimensional finite-element study. *J Biomed Mater Res B Appl Biomater* 2005;73(01):140–147
- 54 Türk AG, Ulusoy M, Toksavul S, Güneri P, Koca H. Marginal bone loss of two implant systems with three different superstructure materials: a randomised clinical trial. *J Oral Rehabil* 2013;40(06):457–463