

# Conus medullaris syndrome in Vogt-Koyanagi-Harada disease: an unusual presentation

## *Síndrome de cone medular na doença de Vogt-Koyanagi-Harada: uma apresentação não usual*

Fabiano Ferreira de Abrantes<sup>1</sup>  Marianna Pinheiro Moraes de Moraes<sup>1</sup>  Wardislaui Ferreira<sup>1</sup>   
Flávio Moura Rezende Filho<sup>1</sup>  José Luiz Pedroso<sup>1</sup>  Orlando Graziani Povoas Barsottini<sup>1</sup> 

<sup>1</sup> Universidade Federal de São Paulo, Departamento de Neurologia e Neurocirurgia, São Paulo SP, Brazil.

Address for correspondence Fabiano Ferreira de Abrantes (e-mail: fabianofabrantest@hotmail.com).

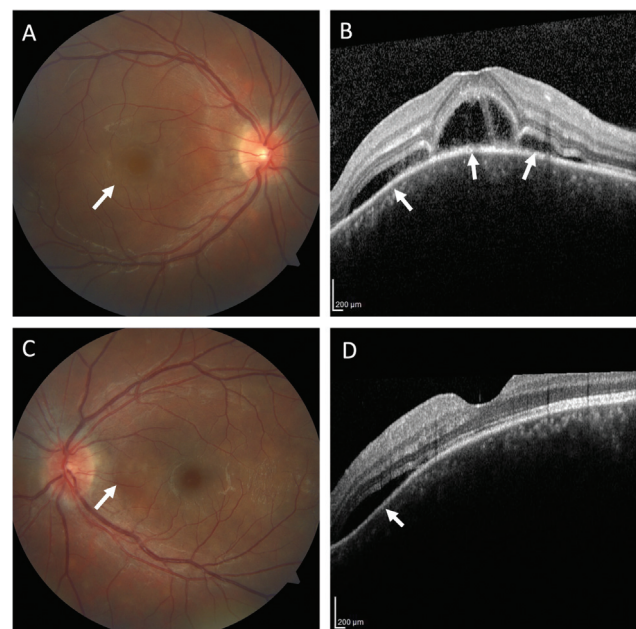
Arq. Neuropsiquiatr. 2022;80(8):867–868.

A 25-year-old woman presented over one week with subacute flaccid paraparesis, saddle anesthesia and sphincter dysfunction, compatible with conus medullaris syndrome. Lumbar magnetic resonance imaging (MRI) (→ **Figure 1**) showed spinal

cord edema and intense leptomeningeal enhancement. Six months after, she presented with aseptic meningitis and bilateral vision loss. Optical coherence tomography (OCT) showed bilateral exudative retinal detachments (→ **Figure 2**).



**Figure 1** Axial T2-weighted (A) and sagittal (C) short-T1 inversion recovery (STIR) magnetic resonance imaging with central hyperintense signal associated with lumbosacral intumescence and conus medullaris edema. Axial (B) and sagittal (D) contrast-enhanced T1-weighted magnetic resonance imaging with leptomeningeal enhancement.



**Figure 2** Right (A) and left (C) eyes retinography depicting hyperemic optic discs and areas of retinal detachment (white arrows). Macular horizontal B-scans reveal bilateral serous retinal detachment, located in the foveal and parafoveal regions in the right eye (B) and in the nasal retina in the left eye (D) (white arrows).

received  
January 26, 2022  
accepted  
February 11, 2022

DOI <https://doi.org/10.1055/s-0042-1755280>.  
ISSN 0004-282X.

© 2022. Academia Brasileira de Neurologia. All rights reserved. This is an open access article published by Thieme under the terms of the Creative Commons Attribution 4.0 International License, permitting copying and reproduction so long as the original work is given appropriate credit (<https://creativecommons.org/licenses/by/4.0/>). Thieme Revinter Publicações Ltda., Rua do Matoso 170, Rio de Janeiro, RJ, CEP 20270-135, Brazil

Incomplete Vogt-Koyanagi-Harada disease (VKHD) was diagnosed based on the combination of bilateral granulomatous panuveitis and aseptic meningitis.<sup>1</sup> Spinal cord involvement is a frequent manifestation of neurological inflammatory diseases, and VKHD should be considered when typical eye, ear, and skin symptoms are present.<sup>2,3</sup>

#### Authors' Contributions

FFA: conceptualization, visualization, writing – original draft, and writing – review & editing; MPMM: conceptualization, visualization, writing – original draft, and writing – review & editing; WF: conceptualization, visualization, writing – original draft; FMRF: visualization, writing – original draft; JLP: conceptualization and writing – review & editing; OGPB: conceptualization, visualization, writing – original draft, and writing – review & editing.

#### Conflict of Interest

The authors have no conflict of interests to declare.

#### References

- 1 Read RW, Holland GN, Rao NA, et al. Revised diagnostic criteria for Vogt-Koyanagi-Harada disease: report of an international committee on nomenclature. *Am J Ophthalmol* 2001;131(05):647–652. Doi: 10.1016/S0002-9394(01)00925-4
- 2 Triplett JD, Buzzard KA, Lubomski M, et al. Immune-mediated conditions affecting the brain, eye and ear (BEE syndromes). *J Neurol Neurosurg Psychiatry* 2019;90(08):882–894. Doi: 10.1136/jnnp-2018-319002
- 3 Gu S, Liu Y, Song Z, Zi X, Deng H. Acute myelitis in a patient with vogt-koyanagi-harada disease: case report and review of the literature. *J Clin Neurol* 2013;9(01):61–64. Doi: 10.3988/jcn.2013.9.1.61