

Study on the serum level of CoQ10B in patients with Moyamoya disease and its mechanism of affecting disease progression

Estudo sobre o nível sérico de CoQ10B em pacientes com doença de Moyamoya e seu mecanismo de afetar a progressão da doença

Jian MA¹, Xudong FU¹, Shaolong ZHOU¹, Enping MENG¹, Zhuo YANG¹, Hengwei ZHANG¹

ABSTRACT

Background: At present, the etiology and pathogenesis of Moyamoya disease (MMD) are not completely clear. Patients are usually diagnosed after cerebrovascular events. Therefore, it is of great clinical significance to explore the predictive factors of MMD. **Objective:** This study aimed to investigate the serum level of CoQ10B, the amount of endothelial progenitor cells (EPCs), and mitochondrial function of EPCs in MMD patients. **Methods:** Forty-one MMD patients and 20 healthy controls were recruited in this study. Patients with MMD were divided into two groups: Ischemic type (n=23) and hemorrhagic type (n=18). Blood samples were collected from the antecubital vein and analyzed by CoQ10B ELISA and flow cytometry. Measures of mitochondrial function of EPCs include oxygen consumption rate (OCR), mitochondrial membrane potential, Ca²⁺ concentration, adenosine triphosphatases activity and ROS level. **Results:** The serum CoQ10B level in MMD patients was significantly lower than that in healthy controls (p<0.001). The relative number of EPCs in MMD patients was significantly higher than that in healthy controls (p<0.001). Moreover, the OCR, mitochondrial membrane potential and ATPase activity were decreased and the Ca²⁺ and reactive oxygen species levels were increased in MMD patients (p<0.001). **Conclusions:** Our results showed obviously decreased serum CoQ10B level and increased EPCs number in patients with MMD compared with healthy patients, and the mitochondria function of EPCs in MMD patients was abnormal.

Keywords: Moyamoya Disease; Endothelial Progenitor Cells; Mitochondria.

RESUMO

Antecedentes: No momento, a etiologia e a patogênese da doença de Moyamoya (DMM) não são completamente claras. Os pacientes geralmente são diagnosticados após eventos cerebrovasculares. Sendo assim, é de grande importância clínica explorar os fatores preditivos de DMM. **Objetivo:** Este estudo teve como objetivo investigar o nível sérico de CoQ10B, a quantidade de células progenitoras endoteliais (CPE) e a função mitocondrial de CPE em pacientes com DMM. **Métodos:** Quarenta e um pacientes com DMM e 20 controles saudáveis foram recrutados neste estudo. Aqueles com DMM foram divididos em dois grupos: tipo isquêmico (n=23) e tipo hemorrágico (n=18). Amostras de sangue foram coletadas da veia antecubital e analisadas por CoQ10B Ensaio de Imunoadsorção Enzimática (ELISA) e citometria de fluxo. As medidas da função mitocondrial de CPE incluem taxa de consumo de oxigênio (TCO), potencial de membrana mitocondrial, concentração de Ca²⁺, atividade de adenosina trifosfatases (ATPase) e nível de espécies reativas de oxigênio (ROS). **Resultados:** O nível sérico de CoQ10B em pacientes com DMM foi significativamente menor do que em controles saudáveis (p<0,001). O número relativo de CPE em pacientes com MMD foi significativamente maior do que em controles saudáveis (p<0,001). Além disso, a TCO, o potencial de membrana mitocondrial e a atividade ATPase diminuíram e os níveis de Ca²⁺ e ROS aumentaram em pacientes com MMD (p<0,001). **Conclusões:** Nossos resultados mostraram obviamente diminuição do nível sérico de CoQ10B e aumento do número de CPE em pacientes com DMM em comparação com pacientes saudáveis, e a função mitocondrial de CPE em pacientes com DMM estava anormal.







Palavras-chave: Doença de Moyamoya; Células Progenitoras Endoteliais; Mitocôndrias.

INTRODUCTION

Moyamoya disease (MMD) is a chronic progressive cerebrovascular disease, which can be divided into three

types: ischemic, hemorrhagic, and asymptomatic¹⁻³. It is usually caused by stenosis or occlusion at the end of internal carotid artery caused by various reasons. Although the incidence rate of MMD is high in cerebral hemorrhage and

¹Zhengzhou University, The Fifth Affiliated Hospital of Zhengzhou, Department of Neurosurgery, Henan, China.

JM  <https://orcid.org/0000-0002-9867-3224>; XF  <https://orcid.org/0000-0002-5635-0355>; SZ  <https://orcid.org/0000-0003-3323-5845>; EM  <https://orcid.org/0000-0001-9424-4337>; ZY  <https://orcid.org/0000-0001-7891-4601>; HZ  <https://orcid.org/0000-0002-9847-0208>

Correspondence: Xudong Fu; Email: xudongfu@webmail.cn.

Conflict of interest: There is no conflict of interest to declare.

Authors' contributions: JM: conducted most of the experiments and wrote the manuscript; SLZ, EPM, ZY, HWZ: conducted the experiments and analyzed the data; XDF designed the study and revised the manuscript. All authors have read and approved the manuscript.

Support: The present study was supported by the Joint Co-construction Project of Henan Medical Science and Technology Research Plan, [LHGJ20190416].

Received on March 29, 2021; Received in its final form on July 08, 2021; Accepted on 21 July, 2021.

cerebral ischemia, the mechanism of its occurrence and development is not clear.

Endothelial progenitor cells (EPCs) are the main cell components in angiogenesis and are considered to be an important participant in the occurrence and development of MMD^{4,5}. As precursor cells, EPCs can directly differentiate into vascular endothelial cells, which are not only involved in the formation of early embryonic blood vessels, but also the most closely related stem cells in adults. Previous studies have found that MMD patients have a higher EPCs number than the healthy controls⁶⁻⁸. Other studies also show that the number of EPCs in MMD patients is lower than that in healthy controls^{9,10}. Besides, Bao et al.¹¹ have reported that MMD patients have higher EPCs counts than the healthy controls, but it did not reach statistical significance. Further experiments are needed to confirm the changes of EPCs in MMD patients.

At present, the recognized EPCs surface markers are CD34, CD133, and VEGFR-2¹². Thus, we defined EPCs as CD34⁺CD133⁺VEGFR-2⁺ cells in this study. Coenzyme Q10 (ubiquinone or coenzyme Q10) is a lipid soluble component that exists in the cell membranes and acts as a carrier for moving electrons and protons¹³. A new study reported that intravenous administration of CoQ10 has a persistent neuroprotective potential in rat stroke model¹⁴. In addition, CoQ10 can decrease histological organ damage in sepsis^{15,16}, be used as a potential treatment for diseases related to the mitochondrial respiratory chain due to its antioxidant effect¹⁷, and attenuate high glucose-induced EPCs apoptosis¹⁸. CoQ10B (coenzyme Q10, homolog B) is an anti-apoptosis enzyme stored in the mitochondria of cells and belongs to the CoQ10 family. CoQ10B is an important biological cofactor, which can increase the concentration of mitochondria in brain and play a neuroprotective role¹⁹. Moreover, Peng et al.²⁰ have reported a significantly lower serum CoQ10B level in MMD patients than that in healthy controls.

Several studies have reported the abnormal number of EPCs in MMD patients, but only one reported the abnormal expression of CoQ10B in MMD patients. Thus, this study verified serum CoQ10B level, number of EPCs, and mitochondrial function of EPCs in MMD patients to provide the basis for molecular targeted therapy of MMD.

METHODS

Patient selection

The study was approved by medical ethics committee of The Fifth Affiliated Hospital of Zhengzhou University. All the participants were informed of the study and signed an informed consent. Forty-one adult MMD patients admitted to The Fifth Affiliated Hospital of Zhengzhou University from June 2018 to March 2020 were selected as the case group, all of which were confirmed by three-dimensional digital subtraction angiography. The results of cerebral angiography

were regarded as the “gold standard” for the diagnosis of MMD. The specific criteria were: I, stenosis or occlusion at the end of the internal carotid artery and/or at the beginning of anterior cerebral artery and middle cerebral artery; II, abnormal vascular network in skull base; III, bilateral lesions.

The exclusion criteria for MMD patients were: I, certain known diseases, such as autoimmune diseases, meningitis, brain tumors, type I neurofibroma, Down's syndrome and brain radiotherapy, which may also cause similar “Moyamoya vessels” in some cerebral vessels during the pathological process, called “quasi Moyamoya disease” or “Moyamoya syndrome”; II, severe atherosclerosis, hypertension, cardiopulmonary and renal insufficiency, contrast agent allergy, and other contraindications of cerebral angiography; III, patients and their families disagree with cerebral angiography. The 41 MMD patients included 23 cases of ischemic type and 18 cases of hemorrhagic type.

Twenty healthy people who came to our hospital for physical examination in the same period were selected as the healthy control group. They were mainly matched based on age and sex and had normal blood counts, biochemical values, electrocardiogram, chest X-ray, color Doppler abdominal ultrasound and color Doppler transcranial ultrasound.

Peripheral blood sample collection

Peripheral blood samples of MMD patients before treatment and of the healthy control group were collected with Ficoll-Paque PLUS (Amersham Corporation). Mononuclear cells were isolated using density-gradient centrifugation.

Detection of Coenzyme Q10 Homolog B by Enzyme-Linked Immunosorbent Assay

Serum CoQ10B level was detected according to the instructions of the ELISA kit (Cusabio, USA). The optical density was read on a plate reader with wavelength of 450 nm. The concentration of CoQ10B was calculated based on the standard curve.

Detection of endothelial progenitor cells by flow cytometry

Collected mononuclear cells were diluted in PBS buffer (10^7 cells/mL). Fc receptor antibody was added for blocking, then PE-CD133 antibody, FITC-CD34 antibody and APC-VEGFR-2 antibody were added. The antibody-labeled cells were washed and detected by flow cytometry. Cells positive for the three antibody were considered EPCs. The relative number of EPCs in mononuclear cells was recorded.

Measurements of oxygen consumption rate

Seahorse XF24 Extracellular Flux Analyzer was used to detect OCRs. First, EPCs were seeded onto a XF 24-well cell culture microplate (2×10^4). After obtaining the basic OCR, oligomycin (sigma Aldrich), 2,4-dinitrophenol (sigma Aldrich), rotenone (sigma Aldrich), and antimycin (sigma Aldrich) were added to each well to measure OCRs.

Detection of mitochondrial membrane potential

In depolarized cells, labeling of the mitochondria with tetramethylrhodaminemethyl ester (TMRM) disappears, and the red fluorescence can be used as an indicator of MMP. Phenol red-free medium containing 500 nM TMRM was used to replace the medium. The plates were incubated for 1 hour at 37°C and washed with PBS for 3 times. Fluorescence signals were detected using a microscope (Olympus), and more than 100 cells in each group were analyzed.

Intracellular Ca²⁺ concentrations

EPCs were cultured in 6-well plates for 12 hours, then the calcium fluorescent probe was added to the cells and the reaction time was 30 minutes at room temperature. Calcium concentration changes in the EPCs were detected by confocal microscopy.

Reactive oxygen species level

DCFH-DA was used to detect the level of ROS. In short, about 10⁶ cells were incubated with DCFH-DA in the dark at 37°C for 30 min. Flow cytometry and Cell Quest software (Becton Dickinson) were used to detect and analyze the fluorescence.

Adenosine triphosphatases activity

According to the manufacturer's instructions, the ATPase activity was detected by an ATP Colorimetric/Fluorometric Assay Kit (Cat# MAK190-1, Sigma).

Statistical analysis

All the clinical data are presented as mean±standard deviation (SD), and statistical analysis was carried out with SPSS 25.0. Chi-square (χ^2) test was used for categorical variables and independent Student's t tests was used for continuous variables. P value less than 0.05 was considered to be statistically significant.

RESULTS

Basic clinical information

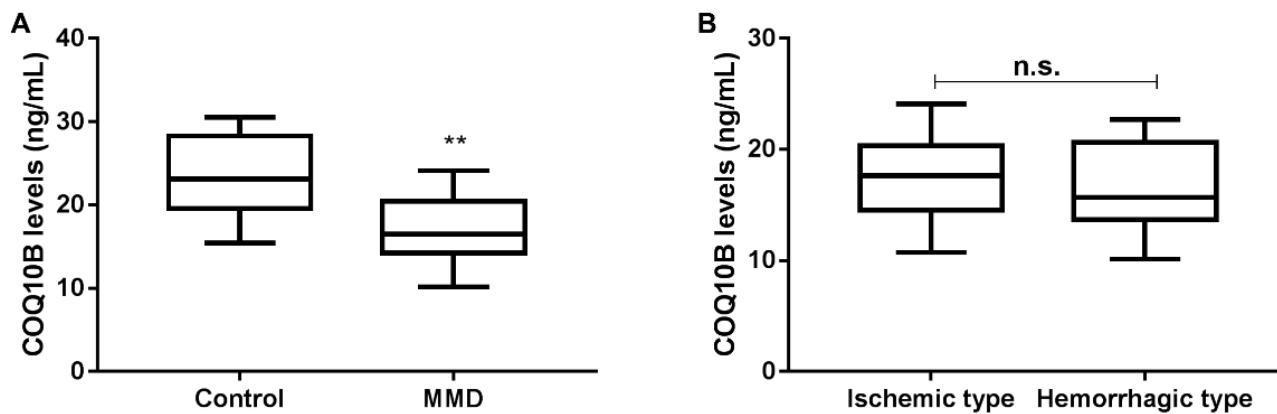
There were 12 males and 8 females in the control group, aged between 18 to 62 years, with an average age of (47.35±11.16) years. In the MMD patients group, there were 26 males and 15 females with an average age of (48.54±6.66) years (range of 29–61 years). There was no significant difference in gender ($\chi^2=0.067$, $p=0.796$) and age ($t=-0.439$, $p=0.664$) between groups. In the ischemic type there were 15 males and 8 females aged 32 to 61 years (average 48.04±5.87 years), with diabetes mellitus in 4 cases, smoking history in 12 cases, and conservative treatment in 10 cases and surgical treatment in 13 cases. In the hemorrhagic type there were 11 males and 7 females with an average age of 49.17±7.69 years and range of 29–60 years. There were 3 cases of diabetes mellitus and 7 cases of smoking history. The treatment methods were conservative treatment in 7 cases and surgical treatment in 11 cases. There were no significant differences in gender ($\chi^2=0.073$, $p=0.786$), age ($t=18.533$, $p=0.615$), incidence of diabetes ($\chi^2=0.004$, $p=0.951$), smoking history ($\chi^2=0.717$, $p=0.397$), and treatment methods ($\chi^2=0.088$, $p=0.767$) between ischemic and hemorrhagic patients.

Serum Coenzyme Q10 Homolog B levels

Serum CoQ10B level of the MMD group (17.07±3.61 ng/mL) was lower than that of the control group (23.60±4.46 ng/mL) on the day of admission ($p<0.001$, Figure 1A). There was no significant difference in serum CoQ10B levels between the ischemic and hemorrhagic groups (17.40±3.57 ng/mL) vs (16.64±3.72 ng/mL), ($p>0.05$, Figure 1B).

Endothelial progenitor cells in peripheral blood

The relative number of EPCs in peripheral blood of the MMD group (0.26±0.05% of PBMCs) on the day of admission was significantly higher than that of the control group (0.15±0.04% of PBMCs) ($p<0.001$, Figure 2A). There was also



** $p<0.001$ vs Control. MMD: Moyamoya disease.

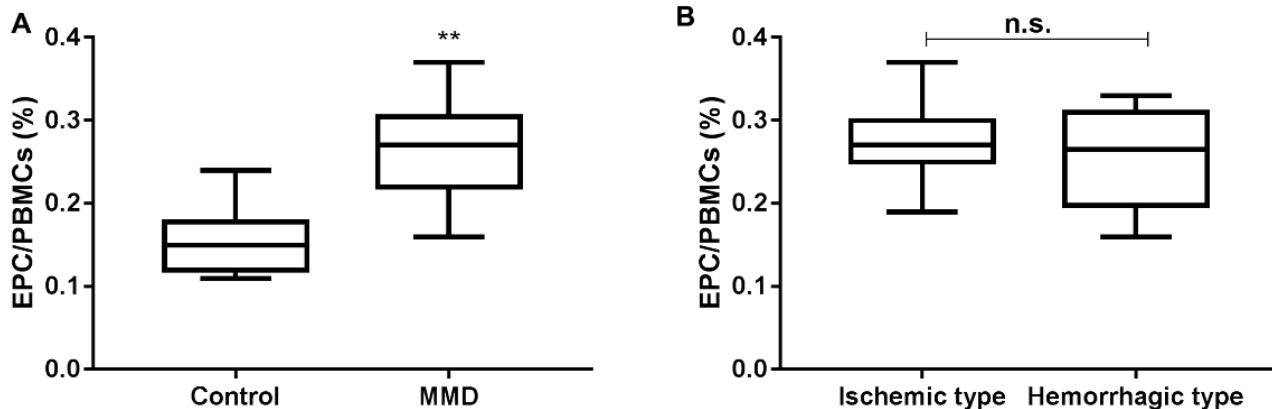
Figure 1. Serum levels of CoQ10B in control and Moyamoya disease patients. (A) Comparison of serum levels of CoQ10 between control group and Moyamoya disease patients group. (B) Comparison of serum levels of CoQ10B between Moyamoya disease patients with ischemic type and hemorrhagic type.

no significant difference in the relative number of EPCs in peripheral blood between the ischemic and hemorrhagic groups ($p>0.05$, Figure 2B).

Correlation of mitochondrial function of endothelial progenitor cells from Moyamoya disease patients

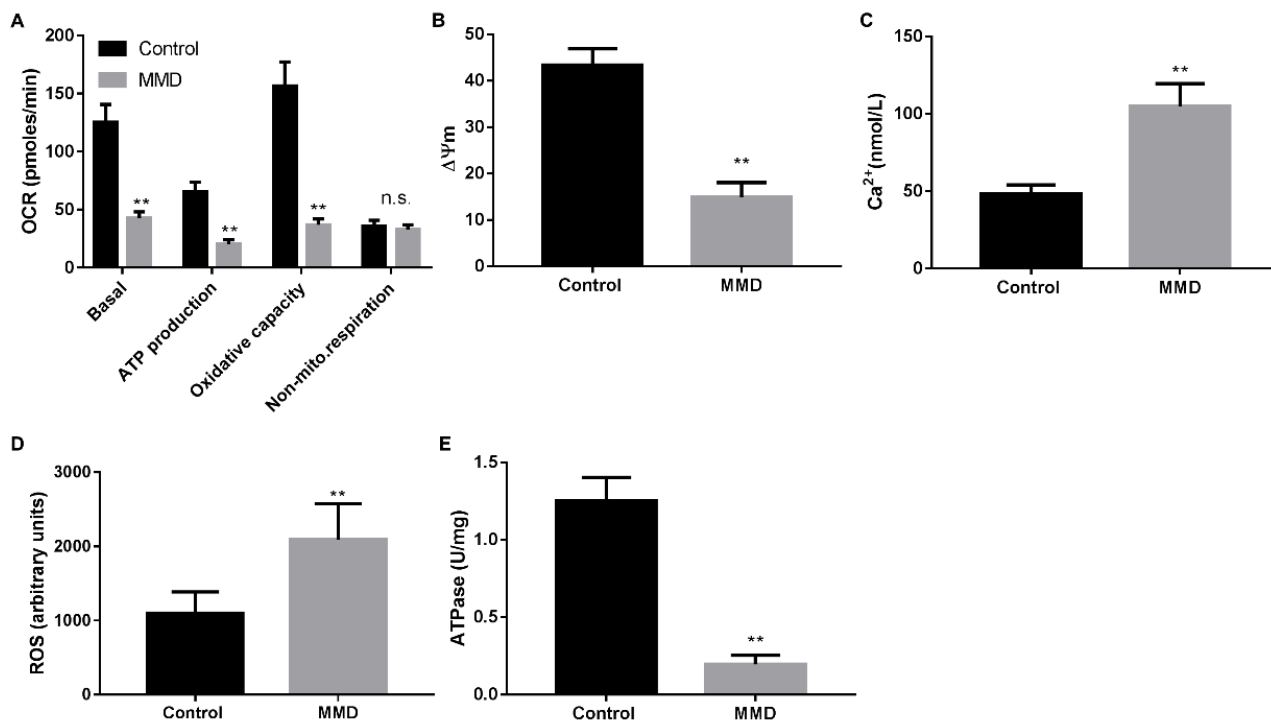
The mitochondrial function change of EPCs in MMD patients was evaluated through OCR. Compared with healthy

controls, EPCs from MMD patients had decreased basal respiratory rate, ATP level, and oxidative capacity (Figure 3A), while the antimycin-insensitive OCR was mildly but non-significantly decreased in EPCs of the MMD. Moreover, the mitochondrial membrane potential ($\Delta\Psi_m$) and ATPase activity were decreased, and the Ca^{2+} and ROS levels were increased in MMD EPCs (Figures 3B to 3E, $p<0.001$), which indicated abnormalities in mitochondrial function of MMD EPCs.



** $p<0.001$ vs Control. MMD: Moyamoya disease; EPCs: endothelial progenitor cells.

Figure 2. Relative amounts of endothelial progenitor cells in control and Moyamoya disease patients. (A) Comparison of the relative number of endothelial progenitor cells in peripheral blood between the control group and the Moyamoya disease patients group. (B) Comparison of the relative number of endothelial progenitor cells in peripheral blood between the MMD patients with ischemic type and hemorrhagic type.



** $p<0.001$ vs Control. MMD: Moyamoya disease; EPCs: endothelial progenitor cells.

Figure 3. Mitochondrial function of endothelial progenitor cells from control and Moyamoya disease patients. (A) Oxygen consumption rate. (B) Mitochondrial membrane potential. (C) Ca^{2+} concentration. (D) reactive oxygen species level. (E) adenosine triphosphatases activity.

DISCUSSION

Studies have shown that the development of MMD is accompanied by angiogenesis. The pathogenesis of MMD is related to EPC abnormality⁶. Currently, it is generally believed that the characteristic surface antigens of EPCs are CD133, CD34 and VEGFR-2. Therefore, we defined EPCs as CD34⁺CD133⁺VEGFR-2⁺ cells. Our study found a significantly higher number of EPCs in MMD group than in control group, which was consistent with previous studies^{6,7}. Previous studies have found that the number of EPCs in patients after superficial temporal artery-middle cerebral artery (STA-MCA) anastomosis was significantly lower than before operation, and the postoperative cerebral angiography was also reduced²¹, which indicated that the increased number of EPCs in patients is one of the pathogenic mechanisms of MMD.

Through a literature search we found that results on the level of EPCs in MMD patients are controversial. Kim et al.⁹ reported decreased levels and defective function of EPCs in MMD patients. While MMD patients recruited in Kim et al.'s study were children, the patients recruited in our study were adults. Jung et al.¹⁰ reported that EPC functional activity was impaired in patients with MMD. The authors found that the colony-forming units (CFU) of EPCs isolated from MMD patients was obviously decreased compared with that of healthy controls, which was different from the relative quantity of EPCs in peripheral blood detected by flow cytometry in our study. This further proves the reliability of our results.

Mitochondria are the powerhouse of cells. They are involved in the production of ATP, regulation of intracellular Ca²⁺, the production and elimination of ROS, regulation of apoptotic cell death, and activation of the protease caspase family, which play an important role in cell proliferation, differentiation, survival, and homeostasis²². A large number of studies have reported that CoQ10 deficiency leads to cancer²³ and other diseases²⁴, and that CoQ10 supplementation

can significantly alleviate disease progression²⁵⁻²⁷. CoQ10B belongs to the CoQ10 family and exists in mitochondria of most eukaryotes, which are an important part of the electron transport chain. Here, we found that the serum CoQ10B level was significantly lower in MMD patients than in controls, which indicated that CoQ10B deficiency may be one of the pathogenesis of MMD.

CoQ10 supplements can play a therapeutic role in many diseases by improving mitochondrial dysfunction²⁸⁻³¹. Choi et al.³² found that the morphology and function of mitochondria in ECFCs of MMD patients were abnormal, suggesting that MMD may be a mitochondrial-related disease. In addition, our study found abnormalities in mitochondrial function of MMD EPCs, which further suggested that CoQ10B may be involved in the MMD disease by affecting mitochondrial function. As we all know, mitochondrial dysfunction leads to apoptosis. Whether the reduced CoQ10B level in MMD patients affect EPCs proliferation and thus decrease the number of EPCs needs further experimental verification.

Our study found that the mitochondria of EPCs from MMD patients exhibited functional abnormalities, the serum CoQ10B level was significantly lower, and the relative number of EPCs was significantly higher in MMD patients than in controls, which provide the basis for the molecular targeted therapy of MMD. However, there was no significant difference in CoQ10B level and number of EPCs between ischemic and hemorrhagic type MMD patients. Maybe the number of cases is too small or there is no significant difference between the two groups, therefore further studies with larger samples are needed. Moreover, the correlation between CoQ10B level and mitochondrial dysfunction in MMD patients should be verified.

In conclusion, serum CoQ10B level was obviously decreased and EPCs number was increased in patients with MMD compared to controls, and the mitochondria function of EPCs in MMD patients was abnormal.

References

1. Kim T, Oh C, Bang J, Kim J, Cho W. Moyamoya disease: treatment and outcomes. *J Stroke*. 2016 Jan;18(1):21-30. <https://doi.org/10.5853/jos.2015.01739>
2. Kim J. Moyamoya disease: epidemiology, clinical features, and diagnosis. *J Stroke*. 2016 Jan;18(1):2-11. <https://doi.org/10.5853/jos.2015.01627>
3. Bedini G, Blecharz K, Nava S, Vajkoczy P, Alessandri G, Ranieri M, et al. Vasculogenic and angiogenic pathways in Moyamoya disease. *Curr Med Chem*. 2016 Feb;23(4):315-45. <https://doi.org/10.2174/092986732304160204181543>
4. Yu J, Du Q, Hu M, Zhang J, Chen J. Endothelial progenitor cells in Moyamoya disease: current situation and controversial issues. *Cell Transplant*. 2020 Jan-Dec;29:963689720913259. <https://doi.org/10.1177/0963689720913259>
5. Sugiyama T, Kuroda S, Nakayama N, Tanaka S, Houkin K. Bone marrow-derived endothelial progenitor cells participate in the initiation of Moyamoya disease. *Neurol Med Chir (Tokyo)*. 2011;51(11):767-73. <https://doi.org/10.2176/nmc.51.767>
6. Rafat N, Beck GC, Peña-Tapia PG, Schmiedek P, Vajkoczy P. Increased levels of circulating endothelial progenitor cells in patients with Moyamoya disease. *Stroke*. 2009 Feb;40(2):432-8. <https://doi.org/10.1161/STROKEAHA.108.529420>
7. Kang HS, Wang KC, Kim SK. Circulating vascular progenitor cells in Moyamoya disease. *J Korean Neurosurg Soc*. 2015 Jun;57(6):428-31. <https://doi.org/10.3340/jkns.2015.57.6.428>
8. Ni G, Liu W, Huang X, Zhu S, Yue X, Chen Z, et al. Increased levels of circulating SDF-1 α and CD34⁺ CXCR4⁺ cells in patients with moyamoya disease. *Eur J Neurol*. 2011 Nov;18(11):1304-9. <https://doi.org/10.1111/j.1468-1331.2011.03393.x>

9. Kim JH, Jung JH, Phi JH, Kang HS, Kim JE, Chae JH, et al. Decreased level and defective function of circulating endothelial progenitor cells in children with moyamoya disease. *J Neurosci Res*. 2010 Feb;88(3):510-8. <https://doi.org/10.1002/jnr.22228>
10. Jung KH, Chu K, Lee ST, Park HK, Kim DH, Kim JH, et al. Circulating endothelial progenitor cells as a pathogenetic marker of moyamoya disease. *J Cereb Blood Flow Metab*. 2008 Nov;28(11):1795-803. <https://doi.org/10.1038/jcbfm.2008.67>
11. Bao XY, Fan YN, Liu Y, Wang QN, Zhang Y, Zhu B, Liu B, Duan L. Circulating endothelial progenitor cells and endothelial cells in Moyamoya disease. *Brain Behav*. 2018 Sep;8(9):e01035. <https://doi.org/10.1002/brb3.1035>
12. Zaccone V, Flore R, Santoro L, Matteis GD, Santoliquido A. Focus on biological identity of endothelial progenitors cells. *Eur Rev Med Pharmacol Sci*. 2015 Nov;19(21):4047.
13. Quinzii C, Naini A, Salviati L, Trevisson E, Navas P, DiMauro S, et al. A Mutation in Para-Hydroxybenzoate-Polyprenyl Transferase (COQ2) Causes Primary Coenzyme Q10 Deficiency. *Am J Hum Genet*. 2006 Feb;78(2):345-9. <https://doi.org/10.1086/500092>
14. Nikolaevna OO, Aronovna GE, Igoevna KE, Alekseevna BM, Vladimirovich GM, Gennadievich MV, et al. Intravenous Administration of Coenzyme Q10 in Acute Period of Cerebral Ischemia Decreases Mortality by Reducing Brain Necrosis and Limiting Its Increase within 4 Days in Rat Stroke Model. *Antioxidants (Basel)*. 2020 Dec;9(12):1240. <https://doi.org/10.3390/antiox9121240>
15. Abitagaoglu S, Akinci SB, Saricaoglu F, Akinci M, Zeybek ND, Muftuoglu S, Aypar U. Effect of coenzyme Q10 on organ damage in sepsis. *Bratisl Lek Listy*. 2015 Aug;116(7):433-9. https://doi.org/10.4149/BLL_2015_082
16. Ozer EK, Goktas MT, Kilinc I, Pehlivan S, Bariskaner H, Ugurluoglu C, et al. Coenzyme Q10 improves the survival, mesenteric perfusion, organs and vessel functions in septic rats. *Biomed Pharmacother*. 2017 Jul;91:912-9. <https://doi.org/10.1016/j.biopha.2017.05.017>
17. Hargreaves IP. Coenzyme Q10 as a therapy for mitochondrial disease. *Int J Biochem Cell Biol*. 2014 Apr;49:105-11. <https://doi.org/10.1016/j.biocel.2014.01.020>
18. Tsai H, Lin C, Huang P, Li S, Chen J, Lin F, et al. Coenzyme Q10 Attenuates High Glucose-Induced Endothelial Progenitor Cell Dysfunction through AMP-Activated Protein Kinase Pathways. *J Diabetes Res*. 2016;2016:6384759. <https://doi.org/10.1155/2016/6384759>
19. Tsui H, Pham N, Amer B, Bradley M, Gosschalk J, Gallagher-Jones M, et al. Human COQ10A and COQ10B are distinct lipid-binding START domain proteins required for coenzyme Q function. *J Lipid Res*. 2019 Jul;60(7):1293-310. <https://doi.org/10.1194/jlr.M093534>
20. Tao PZ, Hao ZZ, Lan W. Screening and identification of moyamoya disease-related serum protein biomarkers. *Chinese Journal of Public Health*. 2018 May;34(5):712-5. <https://doi.org/10.11847/zgggws1117631>
21. Zhang W, Wang X, Wang Z, Shang J, Wang H, Yin G. Effectiveness of superficial temporal artery-to-middle cerebral artery anastomosis in treating Moyamoya disease by reducing endothelial progenitor cells. *World Neurosurg*. 2016 Sep;93:365-70. <https://doi.org/10.1016/j.wneu.2016.06.063>
22. Bhatti J, Bhatti G, Reddy P. Mitochondrial dysfunction and oxidative stress in metabolic disorders - A step towards mitochondria based therapeutic strategies. *Biochim Biophys Acta*. 2017 May;1863(5):1066-77. <https://doi.org/10.1016/j.bbadis.2016.11.010>
23. Abdi S, Montazeri V, Garjani A, Shayanfar A, Pirouzpanah S. Coenzyme Q10 in association with metabolism-related AMPK/PFKFB3 and angiogenic VEGF/VEGFR2 genes in breast cancer patients. *Mol Biol Rep*. 2020 Apr;47(4):2459-73. <https://doi.org/10.1007/s11033-020-05310-z>
24. Romero-Moya D, Santos-Ocaña C, Castaño J, Garrabou G, Rodríguez-Gómez J, Ruiz-Bonilla V, et al. Genetic rescue of mitochondrial and skeletal muscle impairment in an induced pluripotent stem cells model of coenzyme q deficiency. *Stem Cells*. 2017 May;35(7):1687-703. <http://doi.org/10.1002/stem.2634>
25. Delkhash A, Delashoub M, Tehrani A, Bahrami A, Niazi V, Shoorei H, et al. Upregulation of FSHR and PCNA by administration of coenzyme Q10 on cyclophosphamide-induced premature ovarian failure in a mouse model. *J Biochem Mol Toxicol*. 2019 Nov;33(11):e22398. <https://doi.org/10.1002/jbt.22398>
26. Said R, Mohamed H, Kamal M. Coenzyme Q10 mitigates ionizing radiation-induced testicular damage in rats through inhibition of oxidative stress and mitochondria-mediated apoptotic cell death. *Toxicol Appl Pharmacol*. 2019 Nov;383:114780. <https://doi.org/10.1016/j.taap.2019.114780>
27. Xue R, Wang J, Yang L, Liu X, Gao Y, Pang Y, et al. Coenzyme Q10 ameliorates pancreatic fibrosis via the ROS-triggered mTOR signaling pathway. *Oxid Med Cell Longev*. 2019 Feb;2019:8039694. <https://doi.org/10.1155/2019/8039694>
28. Yu J, Lim S, Luo K, Cui S, Quan Y, Shin Y, et al. Coenzyme Q alleviates tacrolimus-induced mitochondrial dysfunction in kidney. *FASEB J*. 2019 Nov;33(11):12288-98. <https://doi.org/10.1096/fj.201900386RR>
29. Sawaddiruk P, Apaijai N, Paiboonworachat S, Kaewchur T, Kasitanon N, Jaiwongkam T, et al. via Coenzyme Q10 supplementation alleviates pain in pregabalin-treated fibromyalgia patients reducing brain activity and mitochondrial dysfunction. *Free Radic Res*. 2019 Aug;53(8):901-9. <https://doi.org/10.1080/10715762.2019.1645955>
30. Nakazawa H, Ikeda K, Shinozaki S, Yasuhara S, Yu Y, Martyn J, et al. Coenzyme Q10 protects against burn-induced mitochondrial dysfunction and impaired insulin signaling in mouse skeletal muscle. *FEBS Open Bio*. 2019 Jan;9(2):348-63. <https://doi.org/10.1002/2211-5463.12580>
31. Sourris K, Harcourt B, Tang P, Morley A, Huynh K, Penfold S, et al. Ubiquinone (coenzyme Q10) prevents renal mitochondrial dysfunction in an experimental model of type 2 diabetes. *Free Radic Biol Med*. 2012 Feb;52(3):716-23. <https://doi.org/10.1016/j.freeradbiomed.2011.11.017>
32. Choi J, Son S, Mook-Jung I, Moon Y, Lee J, Wang K, et al. Mitochondrial abnormalities related to the dysfunction of circulating endothelial colony-forming cells in moyamoya disease. *J Neurosurg*. 2018 Nov;129(5):1151-9. <https://doi.org/10.3171/2017.5.JNS17147>