

Regional brain atrophy is related to social cognition impairment in multiple sclerosis

La atrofia cerebral regional se relaciona con el deterioro de la cognición social en esclerosis múltiple

Tomas P. LABBE^{1,2}, Cristian MONTALBA³, Mariana ZURITA³, Ethel Leslie CIAMPI⁴, Juan Pablo CRUZ⁵, Macarena VASQUEZ⁴, Sergio URIBE^{3,5,6}, Nicolás CROSSLEY^{7,8}, Claudia CÁRCAMO⁴

ABSTRACT

Background: Multiple sclerosis exhibits specific neuropathological phenomena driving to both global and regional brain atrophy. At the clinical level, the disease is related to functional decline in cognitive domains as the working memory, processing speed, and verbal fluency. However, the compromise of social-cognitive abilities has concentrated some interest in recent years despite the available evidence suggesting the risk of disorganization in social life. Recent studies have used the MiniSEA test to assess the compromise of social cognition and have found relevant relationships with memory and executive functions, as well as with the level of global and regional brain atrophy.

Objective: The present article aimed to identify structural changes related to socio-cognitive performance in a sample of patients with relapsing-remitting multiple sclerosis. **Methods:** 68 relapsing-remitting multiple sclerosis Chilean patients and 50 healthy control subjects underwent MRI scans and neuropsychological evaluation including social-cognition tasks. Total brain, white matter, and gray matter volumes were estimated. Also, voxel-based morphometry was applied to evaluate regional structural changes. **Results:** Patients exhibited lower scores in all neuropsychological tests. Social cognition exhibited a significant decrease in this group mostly related to the declining social perception. Normalized brain volume and white matter volume were significantly decreased when compared to healthy subjects. The regional brain atrophy analysis showed that changes in the insular cortex and medial frontal cortices are significantly related to the variability of social-cognitive performance among patients. **Conclusions:** In the present study, social cognition was only correlated with the deterioration of verbal fluency, despite the fact that previous studies have reported its link with memory and executive functions. The identification of specific structural correlates supports the comprehension of this phenomenon as an independent source of cognitive disability in these patients.

Keywords: Multiple Sclerosis; Social Cognition; Theory of Mind; Social Perception; Brain Atrophy.

RESUMEN

Antecedentes: La esclerosis múltiple presenta fenómenos neuropatológicos específicos que conducen a la atrofia cerebral global y regional. A nivel clínico, la enfermedad está relacionada con el deterioro funcional de los dominios cognitivos como la memoria de trabajo, la velocidad de procesamiento y la fluidez verbal. Sin embargo, el compromiso de las habilidades socio-cognitivas ha concentrado cierto interés en los últimos años debido a la evidencia disponible que sugiere el riesgo de desorganización en la vida social. Estudios recientes han utilizado la prueba MiniSEA para evaluar el compromiso de la cognición social y han encontrado relaciones relevantes con la memoria y funciones ejecutiva, así como con el nivel de atrofia cerebral global y regional. **Objetivo:** El presente artículo tiene como objetivo identificar cambios estructurales relacionados con el rendimiento sociocognitivo en una muestra de pacientes con esclerosis múltiple recurrente-remitente. **Métodos:** 68 pacientes Chilenos con esclerosis múltiple recurrente-remitente y 50 sujetos de control sanos se sometieron a resonancias magnéticas y evaluación neuropsicológica, incluidas las tareas de cognición social. Se estimaron los volúmenes cerebrales totales, de materia blanca y materia gris. Además, se aplicó la morfometría basada en vóxel para evaluar los cambios estructurales

¹Universidad de Santiago de Chile, Escuela de Medicina, Santiago, Chile.

²Pontificia Universidad Católica de Chile, Interdisciplinary Center of Neurosciences, Santiago, Chile.

³Pontificia Universidad Católica de Chile, Biomedical Imaging Center, Santiago, Chile.

⁴Pontificia Universidad Católica de Chile, Neurology Department, School of Medicine, Santiago, Chile.

⁵Pontificia Universidad Católica de Chile, Radiology Department, School of Medicine, Santiago, Chile.

⁶Millenium Nucleus for Cardiovascular Magnetic Resonance, Santiago, Chile.

⁷Pontificia Universidad Católica de Chile, Interdisciplinary Center of Neurosciences, Santiago, Chile.

⁸Pontificia Universidad Católica de Chile, Psychiatry Department, School of Medicine, Santiago, Chile.

TPL <https://orcid.org/0000-0002-1566-5940>; CM <https://orcid.org/0000-0003-3370-0233>; MZ <https://orcid.org/0000-0002-4847-311X>;

ELC <https://orcid.org/0000-0002-7330-5433>; JPC <https://orcid.org/0000-0002-7524-7273>; MV <https://orcid.org/0000-0001-7074-5903>;

SU <https://orcid.org/0000-0002-4970-9710>; NC <https://orcid.org/0000-0002-3060-656X>; CC <https://orcid.org/0000-0002-9430-216X>

Correspondence: Claudia Cárcamo Rodríguez; Email: ccarcamo@med.puc.cl.

Conflict of interest: There is no conflict of interest to declare.

Authors' contributions: TL, EC, CC: conceived of the presented idea; TL: wrote the manuscript with support from NK, CC; JPC, MV, SU: helped supervise the project; TL, MZ, CM carried out the experiments.

Received on April 15, 2020; Received in its final form on November 04, 2020; Accepted on November 22, 2020.

regionales. **Resultados:** Los pacientes muestran puntuaciones más bajas en todas las pruebas neuropsicológicas. La cognición social exhibe una disminución significativa en este grupo principalmente relacionada con la disminución de la percepción social. El volumen normalizado del cerebro y el volumen de la materia blanca disminuyeron significativamente en comparación con los sujetos sanos. El análisis regional de atrofia cerebral mostró que los cambios en la corteza insular y la corteza frontal medial están significativamente relacionados con la variabilidad del rendimiento sociocognitivo entre los pacientes. **Conclusiones:** En el presente estudio, la cognición social sólo se correlacionó con el deterioro de la fluencia verbal, a pesar de que estudios previos han reportado su vinculación con la memoria y funciones ejecutivas. La identificación de correlatos estructurales específicos apoya la comprensión de este fenómeno como una fuente independiente de discapacidad cognitiva en estos pacientes.

Palabras clave: Esclerosis Múltiple; Cognición Social; Teoría de la Mente; Percepción Social; Atrofia Cerebral.

INTRODUCTION

Multiple sclerosis (MS) has become a significant source of disability and cognitive impairment in young patients¹ attributed to a disconnection syndrome derived from white matter damage².

The patients develop subclinical or measurable cognitive decline since the earliest stages of the disease, with significant changes in cortical recruitment related to cognitive tasks³. These phenomena can be understood as the use of cognitive reserve and the start of neural compensation⁴. Interestingly, the existence of mild involvement of socio-cognitive functions early in the MS onset⁵ has attracted less interest and could be related to similar mechanisms as those described previously.

Social cognition is defined as the integration of the processes that allow interaction among subjects. It relies on the exchange of social signals that enable us to obtain information about other persons and learn about the environment. Starting from a fundamental phenomenon of attribution of intention, social cognition allows the generation of a shared reality⁶. Some of its most studied domains are theory of mind, the ability to represent the psychological perspective of other subjects⁷, and social perception, the ability to perceive mental states of others based on behavioral signals. There are different approaches to the clinical evaluation of these cognitive domains, allowing to measure whether the subjects can perceive socially relevant information from their environment and to elaborate a coherent mental representation of the cognitive world of others⁸. In this article, the theory of mind can be measured by the faux-pas test (short stories in which intentions must be inferred) and social perception by a series of images in which the patient must identify the emotion that is expressed (face emotion recognition test, as detailed in the methods section).

There is emerging evidence on the compromise of social cognition in MS and its relatively constant relationship with other cognitive domains⁹. However, the wide variability of the subjects studied in Latin America and the Caribbean has made it difficult to reach a pertinent neuropsychological approach to the local characteristics of the patients, at

the same time that the peculiarities of social cognition in this group of patients have not been systematically studied¹⁰. Recently, a significant relationship with impaired memory and executive functions has been shown, as well as with different measures of global brain atrophy and regional changes in associative visual and executive cortical areas in progressive forms of the disease¹¹.

The present study aimed to identify changes in the socio-cognitive performance and related structural and clinical findings in a sample of Chilean patients with relapsing-remitting MS.

METHODS

The present investigation was approved by the ethics committee of the medical school of the Pontifical Catholic University of Chile. All subjects gave their informed consent.

Recruitment

Patients with relapsing-remitting MS under clinical follow-up at a single university center in Chile were invited to participate in a neuropsychological evaluation concomitant with their routine scheduled radiological control. Subjects with Mini Mental state examination (MMSE) score lower than 24 points and significant cognitive impairment in previous screenings were excluded as required by local regulatory law for clinical research. Only patients without acute symptoms or active clinical progression were included.

Healthy volunteers recruited through advertisements in university and healthcare settings, with matched education and age, were included to undergo the same neuropsychological examination, and structural/functional images were acquired using the same protocol.

Information about age, achieved educational level, and employment status was registered for both groups. The patients' expanded disability status scale (EDSS) score and disease duration were registered.

We included 68 patients and 50 healthy control subjects who underwent a full neuropsychological evaluation and

magnetic resonance imaging. Twenty-six (52%) participants in the healthy control group and 48 (70.6%) in the patients group were women ($p=0.039$, chi-square test).

The mean age was 37.43 ± 11.2 years in the patients and 37.97 ± 10.76 years in the control group (p -value = 0.765). The mean disease duration was 5.052 ± 3.649 years, and the median EDSS was 1 (range 1-4.5). Most patients (94.3%) had a university or technical career compared to 98% in the control group (p -value = 0.098). Employability level was 91.5% in the patients and 94% in the control subjects, (p -value = 0.731).

Neuropsychological evaluation

Cognitive evaluation was based on the widely reported approach for MS patients¹². Processing Speed (Symbol Digit Modality Test - SDMT)¹³, Verbal and Visual Episodic Memory, California Verbal Learning Test (CVLT), the Brief Visuospatial Memory Test-Revised (BVM-T-R)¹⁴, Working Memory, Paced Auditory Serial Addition Test (PASAT)¹⁵, Inhibitory control (Stroop test, Spanish version)¹⁶, and cognitive shifts with categorical flexibility and lexical fluency, and control of interference (FAS test)¹⁷ were measured. All the cognitive tasks were performed in Spanish by a single trained evaluator as previously detailed¹¹. Performance in each of these cognitive tasks was expressed as a z-score (the z-score was calculated using the means and standard deviations derived from the local validation of the test).

Depression, fatigue, and mental status were evaluated by applying the Beck Depression Inventory II (BDI-II)¹⁸, Fatigue Severity Scale (FSS)¹⁹, and Mini-Mental Status Examination (MMSE), respectively. Even considering the well-known limitations of MMSE, it was applied to all subjects according to the local regulatory law for clinical research. Social cognition was evaluated using the Mini-Social Cognition and Emotional Assessment (MiniSEA)²⁰, a 30 min composite battery, which is the reduced version of the Social Emotional Assessment test²¹. The MiniSEA consists of two different items including a shortened version of the Faux-Pas (FP) and the Face Emotion Recognition to evaluate the theory of mind and social perception, respectively. Facial emotion recognition is considered a relevant and useful approach to evaluate the social perception domain²².

The theory of mind section includes ten short stories in which a character inadvertently hurts or offends another. Then, the subject needs to infer the other's mental state by making attributions to their knowledge, beliefs, and emotions. Half of the vignettes are control stories, and the other half includes a principal character who inadvertently offends another. The subject is expected to recognize the situations in which an FP is committed, why the leading subject did it (cognitive theory of mind), and how the victim must have felt (affective theory of mind). The Social Perception item consists of 35 pictures for face affect recognition of basic emotions among a list presented at the bottom of the screen

including happiness, sadness, anger, surprise, fear, disgust, and neutrality. A global MiniSEA score and individual performances on social perception and theory of mind task were obtained separately. Given the absence of a locally validated version of MiniSEA, the results are expressed as absolute scores. Social perception and Theory of Mind scores were calculated by expressing the total punctuation as a fraction of 15 points each one. MiniSEA total score was obtained as the sum of both subdomains scores.

The neurocognitive assessment was performed within ten days after the MRI acquisition. The entire neuropsychological examination of each patient took approximately 40 minutes.

Magnetic resonance imaging parameters

Images were acquired by a Philips Ingenia 3 T MRI scanner. T1 weighted 3D images (TR 7.8 ms, TE 3.6 ms, FOV 240 x 240 x 164, flip angle 8°, SENSE factor 2.5, acquisition time 4 min 8 s) and FLAIR (TR 4800 ms, TE 290 ms, FOV 240 x 240 x 164, acquisition time 4 min 33 s) sequences were acquired for the segmentation of brain lesions as detailed below.

Structural study

Structural Image Evaluation using Normalization of Atrophy (SIENAX²³, part of FSL, Fmrib, Oxford, UK, available at <http://www.fmrib.ox.ac.uk/>) was used to estimate brain tissue volume, normalized for subject head size. SIENAX starts by extracting brain and skull images from the single whole-head input data. The brain image is then affine-registered to MNI152 space (using the skull image to determine the registration scaling); this is primarily done to obtain the volumetric scaling factor, to be used as a normalization for head size. Next, tissue-type segmentation with partial volume estimation is carried out to calculate the total volume of brain tissue (including separate estimates of volumes of grey matter, white matter, peripheral grey matter, and ventricular CSF).

Voxel-based morphometry (VBM)

Lesions were segmented by the lesion growth algorithm²⁴ as implemented in the LST toolbox version 1.2.3 (<http://www.statisticalmodelling.de/lst.html>) for SPM. The algorithm first segments the T1 weighted images into the cerebrospinal fluid, grey matter, and white matter. This information is then combined with the co-registered FLAIR intensities to calculate lesion belief maps. By thresholding these maps with a prechosen initial threshold (k), an initial binary lesion map is obtained which is subsequently grown along voxels that appear hyperintense in the FLAIR.

The outcome, a lesion probability map, in alignment with a T1 weighted 3D image, creates a filled image in native space. Then, volumes based on a voxel-wise comparison of grey and white matter volumes were applied to T1 weighted filled images by using SPM8 (statistical parametric mapping 8; functional imaging laboratory, Wellcome Department of

Imaging Neuroscience, Institute of Neurology, London, UK; <http://www.fil.ion.ucl.ac.uk/spm>). It was run on Matlab 2015b (Mathworks, Natick, MA, USA). T1 weighted filled images were segmented, replaced to a DARTEL template, and then normalized to MNI space using VBM8 preprocessing in SPM8²⁵. A two-sample t-test was selected as a factorial design to perform a regional comparison between control subjects and patients. Multiple regression was chosen as the factorial design for MiniSEA, social perception, and theory of mind scores. Interaction analysis was performed to look for differences in the association of regional brain volume and cognitive performance between groups. Significance was assessed using a family-wise error (FWE) corrected for p-value < 0.05 and cluster size > 20 voxels. The cluster size was selected considering the main size of the regions included in the Harvard-Oxford Atlas to avoid the over-representation of small clusters mostly related to noise²⁶.

Statistical analysis

Statistics were performed using Minitab 17 Statistical Software (2010) Computer software, State College, PA, Minitab, Inc. (<http://www.minitab.com>). Non-parametric tests were selected since that normality of the data was discarded using the Kolmogorov-Smirnov test. Correlation between continuous variables (scores in neuropsychological examinations) was assessed using the Spearman correlation. Differences between groups (age, fatigue, depression, MMSE, and neuropsychological scores) were assessed using the Mann-Whitney U test. The interaction of potential confounders, as depression and fatigue scores, with traditional and socio-cognitive domains and the effect of differences in gender composition in the relationship between the domains of social cognition and traditional cognitive domains were assessed by Analysis of Covariance (ANCOVA). The result was considered significant with a p-value < 0.05.

The primary outcomes analyzed through this research were social cognition scores and regional volume as assessed by VBM. Being part of each group (healthy control or patients) was considered as a modifying factor of the effect in the association between clinical findings and MRI data.

RESULTS

No significant difference in mental status (MMSE) was found in comparison with healthy subjects, while significantly higher scores in fatigue and depression questionnaires were found in the patient group (Table 1).

Neuropsychological assessment

Significantly lower scores were obtained for the patient group in processing speed (SDMT, $p = 0.005$), verbal fluency (FAS, $p = 0.001$), and verbal (CVLT, $P = 0.029$) and visual memories (BVM-T-R, $p < 0.001$) compared to healthy controls (Table 2).

As shown in Table 3, patients exhibited a lower score than the control subjects in the MiniSEA (25.26 vs. 26.106, $p = 0.046$) and FER test (11.83 vs. 12.82, $p = 0.015$). The faux-pas score was lower in the patient group, but without statistical significance (13.725 vs. 14.624, $p = 0.153$).

No significant correlation was found between the performance in neurocognitive tasks and socio-cognition performance, except by verbal fluency and global MiniSEA score in the patient's group ($\rho = 0.365$, $p = 0.003$).

A significant correlation was not found for the patient group between fatigue and the MiniSEA score ($\rho = 0.123$, 95%CI (-0.143; 0.373), $p = 0.361$), FER test ($\rho = -0.075$, 95%CI (-0.329; 0.190), $p = 0.579$), or faux-pas test ($\rho = 0.147$, 95%CI (-0.120; 0.394, $p = 0.276$). Also, no significant correlation was found in the control subjects with the MiniSEA score ($\rho = 0.161$, 95%CI (-0.124; 0.422, $p = 0.263$), FER test ($\rho = 0.140$, 95%CI (-0.145; 0.404, $p = 0.332$), or Faux-pas test ($\rho = 0.172$, 95%CI (-0.114; 0.431, $p = 0.233$).

On the other hand, the patients showed a significant correlation between the depression scale score and the MiniSEA score ($\rho = 0.299$, 95%CI (0.036; 0.524, $p = 0.024$) and faux-pas test ($\rho = 0.345$, 95%CI (0.086; 0.561), $p = 0.008$), but not significant with the FER test score ($\rho = 0.011$, 95%CI (-0.250; 0.271, $p = 0.933$). A significant correlation was not found in the control subjects for the MiniSEA score ($\rho = 0.210$, 95%CI (-0.076; 0.464, $p = 0.144$), FER test ($\rho = 0.246$, 95%CI (-0.039;

Table 1. Mental health parameters of control subjects ($n = 50$) and patients ($n = 68$). Depression (Beck), Fatigue (Krupp), and mental status are shown for both groups and disability level and disease evolution time are shown for the patient group.

	Healthy Control	Patients	p-value
BDI-II (Mean \pm SD)	15.50 \pm 7.4	21 \pm 15.38	0.001*
FSS (Mean \pm SD)	1.951 \pm 0.823	2.915 \pm 1.708	0.009*
MMSE (Mean \pm SD)	29.58 \pm 0.6	29.64 \pm 0.7	0.374
EDSS (Median [Min., Max., IQR])	–	1[0.5.2]	
Disease duration time in years (Mean \pm SD)	–	5.052 \pm 3.649	

* $p < 0.05$, statistically significant results.

BDI-II: Beck Depression Inventory II; FSS: Fatigue Severity Scale; MMSE: Mini Mental Status Scale Examination; EDSS: Expanded Disability Status Scale, SD: standard deviation.

0.494, $p = 0.085$) or faux-pas test ($\rho = 0.095$, 95%CI (-0.189; 0.364, $p = 0.512$).

There was no significant effect of the group on social cognition performance after controlling per fatigue level (MiniSEA $F = 0.52$, $p = 0.452$; face emotion recognition $F = 0.01$, $p = 0.903$; faux-pas $F = 0.57$, $p = 0.452$) or depressive status (MiniSEA $F = 0.81$, $p = 0.371$; face emotion recognition $F = 0.52$, $p = 0.472$; faux-pas $F = 0.03$, $p = 0.853$).

Given the absence of a perfect match in gender composition between the healthy control and patient groups, we also studied the effect of this variable in the observed differences in social cognition. Nevertheless, no significant influence of gender was observed for MiniSEA ($F = 1.83$, $p = 0.179$), Social Perception ($F = 0.01$, $p = 0.943$), or Theory of Mind ($F = 3.10$, $p = 0.081$) scores.

Additionally, when correcting for the effect of differences in gender composition in the relationship between the domains of social cognition and traditional cognitive domains, the analysis of covariance did not show a significant effect of the other cognitive tests on the global score of MiniSEA or the domain of social perception. Only a little higher variability in the theory of mind score was observed due to the effect of performance in the visual memory test ($F = 5.23$, $p = 0.025$).

Structural analysis

Patients exhibited significantly lower whole brain and white matter volumes compared to healthy controls (Table 4). No significant correlation between those global or segmentary volumes and sociocognition performance was found.

When looking for differences in regional atrophy between groups, we found significant clusters of voxels in both hemispheres compromising insula, caudate, cingulate gyrus, and medial frontal gyrus showing decreased values in patients compared to control subjects (Figure 1).

When the correlation between Regional Volume and Social Cognition Performance was analyzed, specific areas such as the insula, medial frontal cortex, and cingulate cortex were significantly correlated to the cognitive processes of social perception and theory of mind in both patient and control groups (Figure 2).

The interaction analysis showed that the left insula and both medial frontal regions had significantly different levels of association with the theory of mind and social perception scores (Figure 3). Table 5 details the coordinates, laterality, and size of the identified regions.

DISCUSSION

The present study recruited a considerably large sample of patients with recurrent remitting MS and a control group matched by age and educational level, with the aim of studying the deteriorations in the treatment of social

cognition and the brain structure changes associated with this phenomenon.

Table 2. Differences in cognitive performance considering conventional domains. Healthy control group ($n = 50$). Multiple sclerosis patients ($n = 68$)

Test	Group	Median	SD	p-value
SDMT	Control	0.403	0.882	0.005**
	Patients	-0.03	1.141	
PASAT	Control	-0.123	0.97	0.094
	Patients	-0.52	1.381	
CVLT*	Control	-0.569	1.455	0.029**
	Patients	-1.298	2.027	
BVRT-R*	Control	0.611	0.911	<0.001**
	Patients	-0.166	1.38	
FAS	Control	1.348	1.49	0.001**
	Patients	0.335	1.163	
Stroop	Control	-0.69	7.36	0.773
	Patients	0.929	0.929	

*Delayed free recall scores; ** $p < 0.05$, statistically significant results; SD: standard deviation; SDMT: Symbols and Digit Modality Test; PASAT: Paced Auditory Serial Addition test; CVLT: California Visual and Verbal Learning test; BVRT: Brief Visuospatial Memory test-revised; FAS: Fluency test.

Table 3. Social cognition results: global MiniSEA scores and subdomains. Comparison between groups is shown. Healthy control group ($n = 50$), multiple sclerosis patients ($n = 68$).

	Group	Median	IQR	p-value
MiniSEA	Control	26.106	3.96	0.046*
	Patients	25.26	3.033	
Facial emotion recognition	Control	12.82	2.09	0.015*
	Patients	11.83	1.738	
Faux-pas test	Control	14.625	2.25	0.153
	Patients	13.725	2.7	

* $p < 0.05$, statistically significant results. MiniSEA: Mini-Social Cognition and Emotional Assessment.

Table 4. Brain volume comparison. Median of all volumes measured by the SIENAX algorithm are higher in the control group (Control group, $n = 50$; Patients $n = 68$).

	Healthy control (Median)	Patients (Median)	p-value
Normalized brain volume	1556749	1525070	0.001*
Grey matter volume	781920	773392	0.162
White matter volume	777425	752897	<0.001*

* $p < 0.05$, statistically significant results.

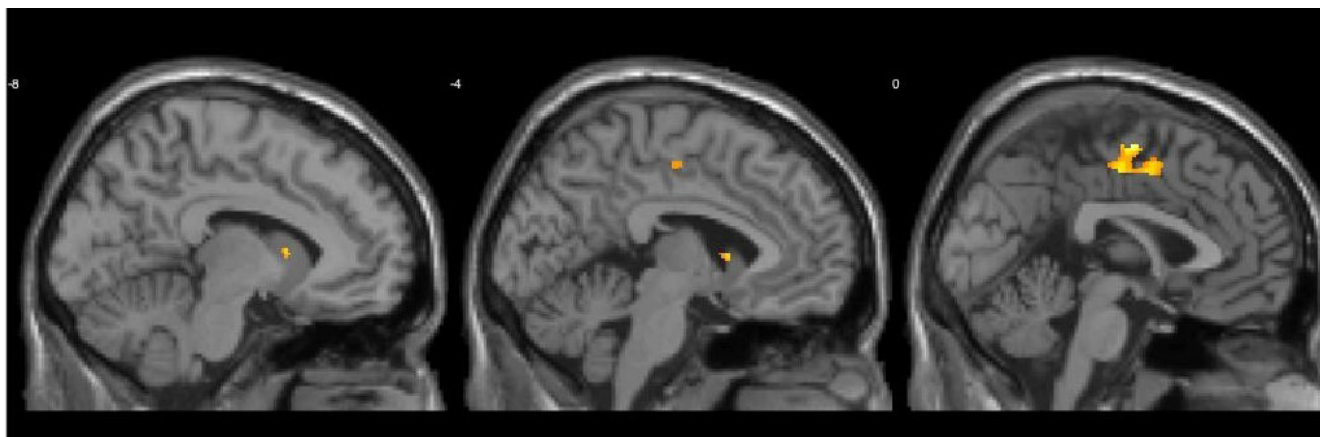


Figure 1. Voxel Based Morphometry. Selected sagittal images show voxels with significant differences between healthy control group ($n = 50$) and multiple sclerosis patients ($n = 68$). Brain atrophy observed in multiple sclerosis is not a homogenously distributed phenomenon; specific brain regions concentrate more atrophy. Insula, caudate, cingulate gyrus, and medial frontal gyrus are among the compromised regions also frequently involved in social cognition processes (comparison of control subjects versus patients). Only significant clusters are shown ($p < 0.05$). Warmer colors represent higher T-values.

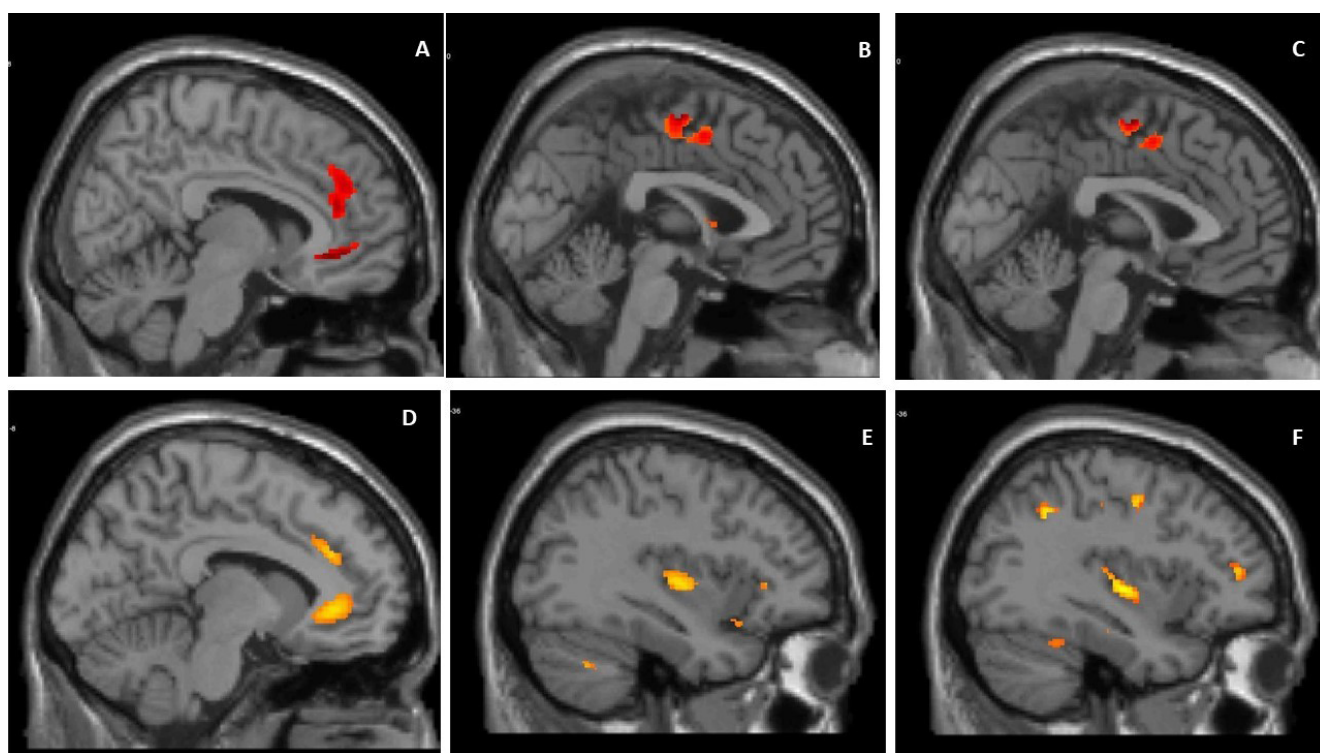
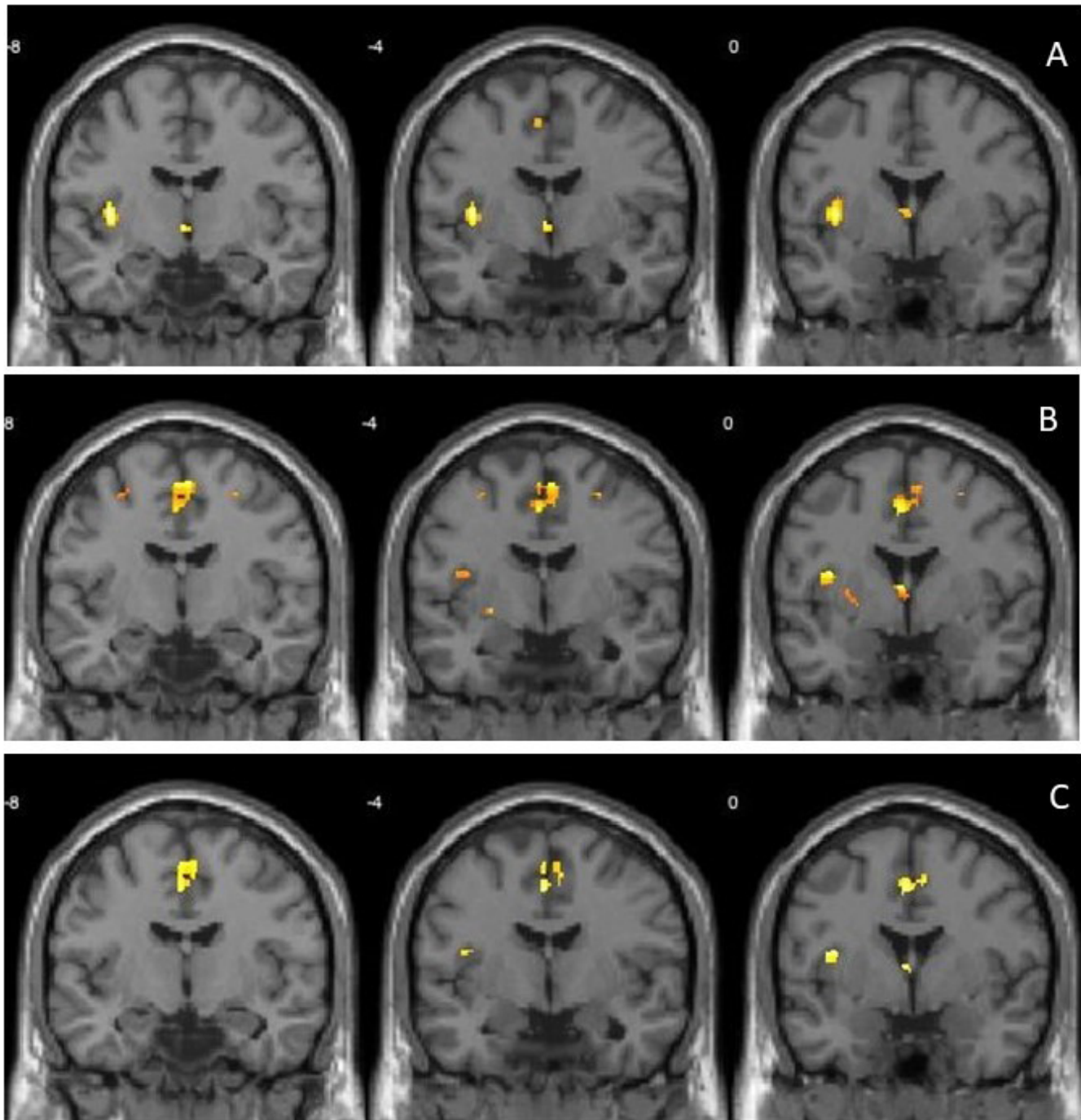


Figure 2. Brain areas showing significant association between regional volume and social cognition performance. Selected sagittal images showing in A, MiniSEA, B, social perception, and C, theory of mind in the patient group ($n = 68$); D, MiniSEA, E, social perception, and F, theory of mind in healthy control subjects ($n = 50$). Only significant clusters are shown ($p < 0.05$). Warmer colors represent higher T-values.

The distribution of the findings in the neuropsychological study requires some attention. The compromise of processing speed, verbal fluency, and verbal and visual memories are compatible with the findings reported in the literature²⁷. The relative conservation of performance in tests of working memory and cognitive interference may be related to compensatory changes in brain connectivity, the study of which will require a functional approach. Despite some variations,

our neuropsychological findings were in a feasible range of the patients with MS²⁸. Possibly, the relative preservation of several explored neurocognitive domains may be related with some characteristics of the sample, as the disease duration and wide use of therapies directed to modify the course of the disease were present in our center.

Despite the relative independence of social cognition from performance on other cognitive tests, there was a



VBM: Voxel-based morphometry; MS: multiple sclerosis; MiniSEA: Mini-Social Cognition and Emotional Assessment.

Figure 3. VBM interaction analysis. Clusters whose levels of association with social cognition performance are significantly different in healthy control ($n = 50$) versus MS patients ($n = 68$, information displayed in selected coronal views). A: MiniSEA; B: social perception; C: theory of mind. Insula and medial frontal regions are among the areas of neuropsychological relevance whose volumetry is associated with measures of social cognition. Only significant clusters are shown ($p < 0.05$). Warmer colors represent higher T-values.

significant correlation with the verbal fluency test in the group of patients. There is evidence that sociocognitive functioning and measures of rapid information flow such as verbal fluency are related. The focus of this relationship would be found in the neurodynamics of prefrontal regions²⁹. At the same time, it is important to recognize that the findings on both the pattern of socio-cognitive deterioration in MS and

its correlation with the structural study do not exactly coincide with what was previously reported, even using the same test battery. A recent study reports a significant relationship of the domains of social cognition with performance in memory and executive functions tests, as well as an association with global brain atrophy and areas of visual association. This differs significantly from our findings, even though

Table 5. Voxel Based Morphometry comparison of association between social cognition performance and regional brain volume in control (n=50) versus patients (n=68) (interaction analysis). The left insula and medial frontal region (bilateral) showed significantly different levels of association with the theory of mind and social perception in healthy control subjects and RR-MS patients. Interestingly, those regions exhibit a well-documented influence in socio-cognitive functions.

Peak MNI Coordinates							
Task	Hemisphere	Brain region	Cluster size	X	Y	Z	Peak intensity (t value)
MiniSEA	L	Insula	556	-37.5	-7.5	6	3.4151
	R	Putamen	52	25.5	7.5	6	2.5131
	L	Putamen	55	-25.5	6	6	2.282
	R	Thalamus	22	3	-24	9	2.6437
	L	Precuneus	200	-6	-66	28.5	2.3188
	R	Precuneus	22	15	-55.5	51	-2.6159
	R	Middle Frontal Gyrus	54	28.5	-6	52.5	-2.1859
	R	Superior Frontal Gyrus	42	22.5	10.5	52.5	-2.2862
	L	Medial Frontal Gyrus	39	0	-9	58.5	-2.8403
Social perception							
	L	Insula	169	-36	-18	3	-2.8699
	L	Insula	393	-36	9	15	4.2085
	L	Caudate	401	-7.5	10.5	7.5	4.2433
	R	Thalamus	22	3	-25.5	7.5	2.3914
	L	Medial Frontal Gyrus	167	-12	16.5	48	-3.3116
	R	Medial Frontal Gyrus	946	3	-15	57	3.8668
	L	Parietal Lobe	66	-31.5	-52.5	-40.5	-2.4902
	R	Medial Frontal Gyrus	34	12	34.5	39	-4.3898
	L	Middle Frontal Gyrus	52	-28.5	13.5	43.5	-4.7525
	L	Parietal Lobe	25	-37.5	-30	48	2.9788
	R	Middle Frontal Gyrus	116	27	19.5	48	3.0708
	L	Middle Frontal Gyrus	20	-30	-4.5	54	2.3153
Theory of mind							
	L	Insula	604	-34	9	14	4.4925
	L	Insula	169	-37.5	-18	1.5	-2.3379
	R	Caudate	508	-7.5	10.5	7.5	5.5474
	R	Thalamus	21	3	-24	9	2.8925
	L	Posterior Cingulate	50	-3	-61.5	22.5	2.0879
	L	Medial Frontal Gyrus	204	-12	34.5	40.5	-3.91898
	L	Parietal Lobe	50	1.5	-69	37.5	2.9298
	R	Cingulate Gyrus	1326	-1.5	-1.5	46.5	3.7867
	L	Parietal Lobe	120	-36	-46.5	40.5	-2.427
	R	Medial Frontal Gyrus	36	12	34.5	40.5	-3.9899
	L	Middle Frontal Gyrus	60	-28.5	13.5	43.5	-4.1395
	R	Middle Frontal Gyrus	54	27	19.5	48	2.8369
	R	Parietal Lobe	27	15	-55.5	51	-2.9776
	L	Medial Frontal Gyrus	26	-10.5	6	55.5	-3.2675
	R	Middle Frontal Gyrus	30	28.5	-4.5	54	3.1619

MiniSEA: Mini-Social Cognition and Emotional Assessment; L: left, R: right.

the sample was also Latin American patients (specifically Chilean). This is probably related to different clinical expressions in RR-MS and primary progressive patients. The relative importance of each sub-domain and its structural correlate vary significantly¹¹.

The above described pattern may have a functional correlate with the findings in the exploration of social cognition. Since this domain showed a compromise based fundamentally on the change in performance in the facial expression recognition test, there is evidence of the relationship of this process with the information processing speed. The relative conservation of the Theory of Mind domain is probably related to the greater complexity of this process and the conservation of the processes of cognitive interference and working memory involved in the performance of these tests. On the other hand, the significant correlation between verbal fluency and the MiniSEA score has a history in the multiple sclerosis literature³⁰. Although it would be beyond the sensitivity of our statistical method, we speculate that this process would be mediated by the effect on social perception, since that the FAS test is considered an adequate measure of the integrity of the processes of information flow, flexibility, and control of cognitive interference¹⁷.

On the other hand, the level of selected depressive symptoms was shown to significantly impact performance in the social cognition test, especially the social perception subdomain. Although some background has indicated the independence of mood and social cognition performance in MS^{31,32},

the interference of depression in social cognition has been reported in other clinical settings³¹.

Although in this sample of patients it was possible to rule out the influence of gender on the differences observed in the domain of social cognition, it is important to recognize that gender has been classically associated with socio-cognitive variability. However, many of the differences in this area refer to developmental aspects^{33,34}. A future study with a design that could exclude this factor would provide more insight.

This article contributes to clarifying one of the several expressions of social cognition deterioration in MS. Specifically, robust corroboration of the decline in facial expression recognition and its neural correlates has been accomplished. Additionally, our results have the interesting feature of exploring this cognitive process in a considerable number of Latin American patients.

ACKNOWLEDGEMENTS

T. Labbe thanks CONICYT (Comisión Nacional de Ciencia y Tecnología) for the doctoral scholarship (21160298) received during the development of this paper. The authors thank CONICYT-PIA, CONICYT, Project number ACT1416 for funding Support. SU thanks funding from the Millennium Science Initiative of the Ministry of Economy, Development and Tourism, grant Nucleus for Cardiovascular Magnetic Resonance; CONICYT, FONDECYT Regular Project Number 1181057.

REFERENCES

1. Eskandarieh S, Heydarpour P, Minagar A, Pourmand S, Sahraian MA. Multiple sclerosis epidemiology in East Asia, South East Asia and South Asia: a systematic review. *Neuroepidemiology*. 2016;46(3):209-21. <https://doi.org/10.1159/000444019>
2. Zhou F, Zhuang Y, Gong H, Wang B, Wang X, Chen Q, et al. Altered inter-subregion connectivity of the default mode network in relapsing remitting multiple sclerosis: a functional and structural connectivity study. *PLoS One*. 2014 Jul 7;9(7):e101198.
3. Audoin B, Duong MVA, Ranjeva J-P, Ibarrola D, Malikova I, Confort-Gouny S, et al. Magnetic resonance study of the influence of tissue damage and cortical reorganization on PASAT performance at the earliest stage of multiple sclerosis. *Hum Brain Mapp*. 2005 Mar;24(3):216-28. <https://doi.org/10.1002/hbm.20083>
4. Stern Y, Habeck C, Moeller J, Scarmeas N, Anderson KE, Hilton HJ, et al. Brain networks associated with cognitive reserve in healthy young and old adults. *Cereb Cortex*. 2005 Apr;15(4):394-402. <https://doi.org/10.1093/cercor/bhh142>
5. Jehna M, Neuper C, Petrovic K, Wallner-Blazek M, Schmidt R, Fuchs S, et al. An exploratory study on emotion recognition in patients with a clinically isolated syndrome and multiple sclerosis. *Clin Neurol Neurosurg*. 2010 Jul;112(6):482-4. <https://doi.org/10.1016/j.clineuro.2010.03.020>
6. Frith CD. Social cognition. *Philos Trans R Soc Lond B Biol Sci*. 2008 Jun 12;363(1499):2033-9. <https://doi.org/10.1098/rstb.2008.0005>
7. Baron-Cohen S. Without a theory of mind one cannot participate in a conversation. *Cognition*. 1988 Jun;29(1):83-4. [https://doi.org/10.1016/0010-0277\(88\)90011-X](https://doi.org/10.1016/0010-0277(88)90011-X)
8. Labbé T, Ciampi E, Rodríguez CC. Social cognition: concepts, neural basis and its role in multiple sclerosis. *Neurol Clin Neurosci*. 2017 Oct 16;6:3-8. <https://doi.org/10.1111/ncn3.12164>
9. Bora E, Özakbaş S, Velakoulis D, Walterfang M. Social cognition in Multiple Sclerosis: a meta-analysis. *Neuropsychol Rev*. 2016 Jun;26(2):160-72. <https://doi.org/10.1007/s11065-016-9320-6>
10. Ferreira MLB. Cognitive deficits in multiple sclerosis: a systematic review. *Arq Neuropsiquiatr*. 2010 Aug;68(4):632-41. <https://doi.org/10.1590/S0004-282X2010000400029>
11. Ciampi E, Uribe-San-Martin R, Vásquez M, Ruiz-Tagle A, Labbe T, Cruz JP, et al. Relationship between social cognition and traditional cognitive impairment in Progressive Multiple Sclerosis and possible implicated neuroanatomical regions. *Mult Scler Relat Disord*. 2018 Feb;20:122-8. <https://doi.org/10.1016/j.msard.2018.01.013>
12. Benedict RHB, Smerbeck A, Parikh R, Rodgers J, Cadavid D, Erlanger D. Reliability and equivalence of alternate forms for the symbol digit modalities test: implications for multiple sclerosis clinical trials. *Mult Scler*. 2012 Sep;18(9):1320-5. <https://doi.org/10.1177/1352458511435717>
13. Smith A. SDMT: test de símbolos y dígitos: manual. Madrid: TEA Ediciones; 2002. 40p.

14. Benedict RHB. Brief visuospatial memory test revised professional manual. Odessa (FL): Psychological Assessment Resources, Inc; 1997.
15. Gronwall DM. Paced auditory serial-addition task: a measure of recovery from concussion. *Percept Mot Skills*. 1977 Apr;44(2):367-73. <https://doi.org/10.2466/pms.1977.44.2.367>
16. Golden C, Freshwater S, Golden Z. Stroop color and word test. APA PsycTests. 2002. <https://doi.org/10.1037/t06065-000>
17. Delis DC, Kaplan E, Kramer JH. Delis-Kaplan executive function system. Washington, D.C: American Psychological Association; 2001. <https://doi.org/10.1037/t15082-000>
18. Araneda RM, Solar FC, González PR, Peralta MV. Propiedades psicométricas del inventario de depresión de Beck-II en adolescentes chilenos. *Ter Psicol*. 2008 Jul;26(1):59-69. <https://doi.org/10.4067/S0718-48082008000100005>
19. Krupp LB, Coyle PK, Doscher C, Miller A, Cross AH, Jandorf L, et al. Fatigue therapy in multiple sclerosis: results of a double-blind, randomized, parallel trial of amantadine, pemoline, and placebo. *Neurology*. 1995 Nov 1;45(11):1956-61. <https://doi.org/10.1212/WNL.45.11.1956>
20. Bertoux M, Volle E, de Souza LC, Funkiewiez A, Dubois B, Habert MO. Neural correlates of the mini-SEA (Social cognition and Emotional Assessment) in behavioral variant frontotemporal dementia. *Brain Imaging Behav*. 2014 Mar;8(1):1-6. <https://doi.org/10.1007/s11682-013-9261-0>
21. Funkiewiez A, Bertoux M, Cruz de Souza L, Lévy R, Dubois B. The SEA (Social cognition and Emotional Assessment): a clinical neuropsychological tool for early diagnosis of frontal variant of frontotemporal lobar degeneration. *Neuropsychology*. 2012 Jan;26(1):81-90. <https://doi.org/10.1037/a0025318>
22. Jansen M, Overgaauw S, De Bruijn ERA. Social cognition and obsessive-compulsive disorder: a review of subdomains of social functioning. *Front Psychiatry*. 2020 Mar 13;11:118. <https://doi.org/10.3389/fpsy.2020.00118>
23. Smith SM, Zhang Y, Jenkinson M, Chen J, Matthews PM, Federico A, et al. Accurate, robust, and automated longitudinal and cross-sectional brain change analysis. *Neuroimage*. 2002 Sep;17(1):479-89. <https://doi.org/10.1006/nimg.2002.1040>
24. Schmidt P, Gaser C, Arsic M, Buck D, Förchler A, Berthele A, et al. An automated tool for detection of FLAIR-hyperintense white-matter lesions in Multiple Sclerosis. *Neuroimage*. 2012 Feb 15;59(4):3774-83. <https://doi.org/10.1016/j.neuroimage.2011.11.032>
25. Ashburner J. A fast diffeomorphic image registration algorithm. *Neuroimage*. 2007 Oct 15;38(1):95-113. <https://doi.org/10.1016/j.neuroimage.2007.07.007>
26. Woo C-W, Krishnan A, Wager TD. Cluster-extent based thresholding in fMRI analyses: pitfalls and recommendations. *Neuroimage*. 2014 May 1;91:412-9. <https://doi.org/10.1016/j.neuroimage.2013.12.058>
27. Grzegorski T, Losy J. Cognitive impairment in multiple sclerosis - a review of current knowledge and recent research. *Rev Neurosci*. 2017 Nov 27;28(8):845-60. <https://doi.org/10.1515/revneuro-2017-0011>
28. Kalb R, Beier M, Benedict RHB, Charvet L, Costello K, Feinstein A, et al. Recommendations for cognitive screening and management in multiple sclerosis care. *Mult Scler*. 2018 Nov;24(13):1665-80. <https://doi.org/10.1177/1352458518803785>
29. Itakura M, Pu S, Ohdachi H, Matsumura H, Yokoyama K, Nagata I, et al. Association between social functioning and prefrontal cortex function during a verbal fluency task in schizophrenia: a near-infrared spectroscopic study. *Psychiatry Clin Neurosci*. 2017 Nov;71(11):769-79. <https://doi.org/10.1111/pcn.12548>
30. Henry A, Tourbah A, Chaunu M-P, Bakchine S, Montreuil M. Social cognition abilities in patients with different multiple sclerosis subtypes. *J Int Neuropsychol Soc*. 2017 Sep;23(8):653-64. <https://doi.org/10.1017/S1355617717000510>
31. Förster K, Jörgens S, Air TM, Bürger C, Enneking V, Redlich R, et al. The relationship between social cognition and executive function in major depressive disorder in high-functioning adolescents and young adults. *Psychiatry Res*. 2018 May;263:139-46. <https://doi.org/10.1016/j.psychres.2018.02.046>
32. Neuhaus M, Bagutti S, Yaldizli Ö, Zwahlen D, Schaub S, Frey B, et al. Characterization of social cognition impairment in multiple sclerosis. *Eur J Neurol*. 2018 Jan;25(1):90-6. <https://doi.org/10.1111/ene.13457>
33. Biatecka-Pikul M, Kołodziejczyk A, Bosacki S. Advanced theory of mind in adolescence: do age, gender and friendship style play a role? *J Adolesc*. 2017 Apr;56:145-56. <https://doi.org/10.1016/j.adolescence.2017.02.009>
34. Kuhnert R-L, Begeer S, Fink E, de Rosnay M. Gender-differentiated effects of theory of mind, emotion understanding, and social preference on prosocial behavior development: a longitudinal study. *J Exp Child Psychol*. 2017 Feb;154:13-27. <https://doi.org/10.1016/j.jecp.2016.10.001>