

# Cutaneous metastasis in esophageal squamous cell carcinoma

Rajiv Baijal,  
Praveenkumar Hassan,  
Mayank Jain, Deepak Gupta,  
Nimish Shah

Department of Gastroenterology,  
Jagjivan Ram Hospital, Maratha  
Mandir Marg, Mumbai Central,  
Mumbai, Maharashtra, India

## Address for correspondence:

Dr. Deepak Gupta,  
Department of Gastroenterology,  
Jagjivan Ram Hospital,  
Maratha Mandir Marg, Mumbai,  
Maharashtra, India.  
E-mail: dkgt@rediffmail.com

## A B S T R A C T

Cutaneous metastasis from internal malignancies are common in breast cancer, pulmonary malignancies and melanomas. The primary site of metastases has been reported to the chest and abdomen. We are hereby reporting rare case of cutaneous metastasis in esophageal cancer.

**Key words:** Cutaneous metastasis, esophageal cancer, fine needle aspiration cytology

## INTRODUCTION

The incidence of cutaneous metastasis is 5.3% among all internal malignancies. The most common tumor to metastasize to the skin is breast cancer. Cutaneous metastasis from esophageal cancer has rarely been reported.



Figure 1: Cutaneous nodule

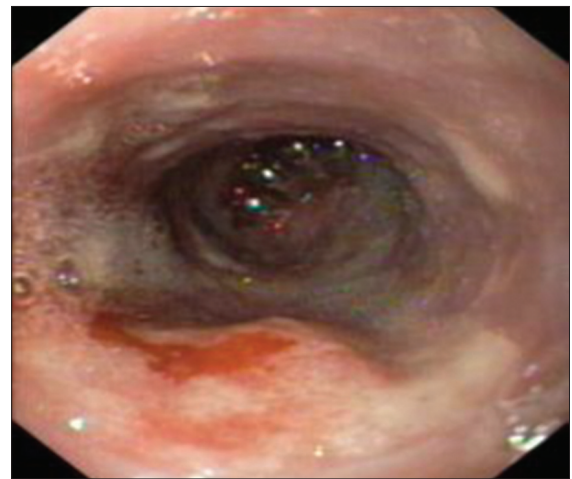


Figure 2: Diffuse esophageal ulceration

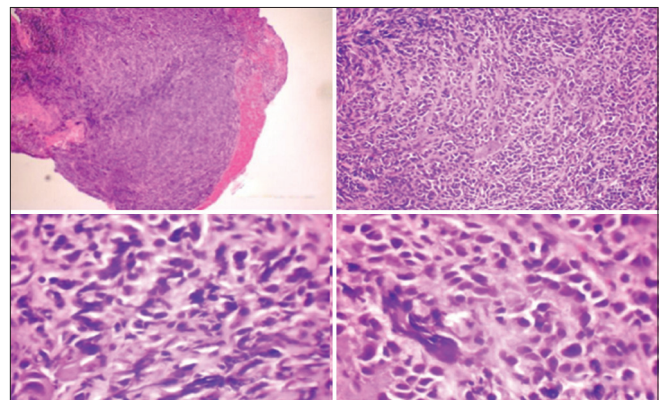


Figure 3: Histopathology s/o poorly differentiated squamous cell carcinoma

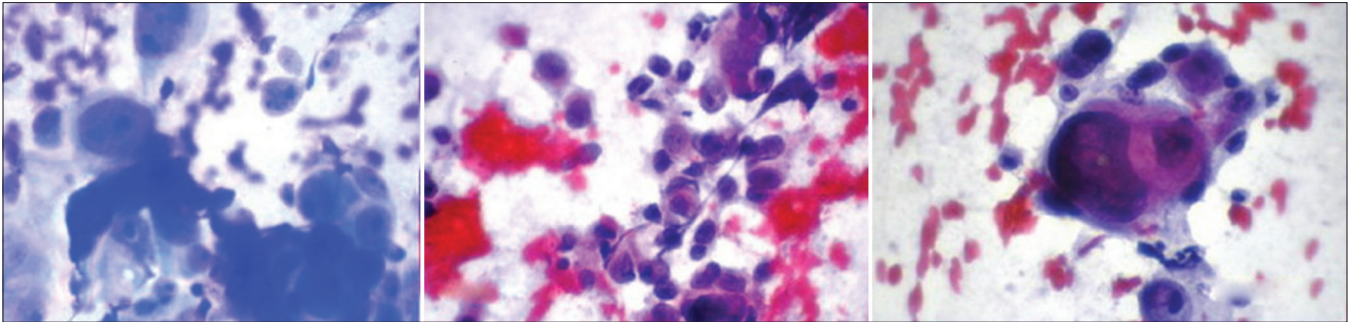
## Access this article online

### Quick Response Code:



Website:  
[www.ijmpo.org](http://www.ijmpo.org)

DOI:  
10.4103/0971-5851.113428



**Figure 4:** Fine needle aspiration cytology from cutaneous lesion

## CASE REPORT

A 34-year-old male, chronic smoker, presented with weight loss of 10 kg in last 2 months and two episodes of scanty hematemesis.

A subcutaneous nodule [Figure 1] was noted in lower chest on the left side, between 11<sup>th</sup> and 12<sup>th</sup> rib, was measuring 2 × 1.5 cm, and was nontender and fixed. Liver was palpable 7 cm below the costal margin.

Esophagoduodenoscopy showed diffuse esophageal ulceration in the entire length of esophagus [Figure 2]. Biopsy from esophagus revealed poorly differentiated squamous cell carcinoma of the esophagus [Figure 3]. Fine needle aspiration cytology (FNAC) from skin lesion was suggestive of squamous cell carcinoma [Figure 4].

## DISCUSSION

Cutaneous metastases from malignant tumors of internal organs account for 0.7-9% cases. They are common in breast, pulmonary malignancies, and melanomas. Cutaneous involvement occurs due to hematologic or lymphatic spread and presents as nodules or papules. Skin metastases are rare in esophageal squamous cell carcinoma. Common site of metastases has been reported to the chest and abdomen.

**How to cite this article:** Baijal R, Hassan P, Jain M, Gupta D, Shah N. Cutaneous metastasis in esophageal squamous cell carcinoma. *Indian J Med Paediatr Oncol* 2013;34:42-3.  
**Source of Support:** Nil, **Conflict of Interest:** None declared.

## New features on the journal's website

### Optimized content for mobile and hand-held devices

HTML pages have been optimized of mobile and other hand-held devices (such as iPad, Kindle, iPod) for faster browsing speed. Click on [**Mobile Full text**] from Table of Contents page.

This is simple HTML version for faster download on mobiles (if viewed on desktop, it will be automatically redirected to full HTML version)

### E-Pub for hand-held devices

EPUB is an open e-book standard recommended by The International Digital Publishing Forum which is designed for reflowable content i.e. the text display can be optimized for a particular display device.


Click on [**EPub**] from Table of Contents page.

There are various e-Pub readers such as for Windows: Digital Editions, OS X: Calibre/Bookworm, iPhone/iPod Touch/iPad: Stanza, and Linux: Calibre/Bookworm.

### E-Book for desktop

One can also see the entire issue as printed here in a 'flip book' version on desktops.

Links are available from Current Issue as well as Archives pages.

Click on  View as eBook