

Lacrimal gland enlargement in acute myeloid leukemia

Sir,

An 18-year-old male got admitted to emergency room (ER)

of our hospital, a tertiary care center, for evaluation of bilateral protrusion of eyeballs. There was history of easy fatigability and ill-health for past 2 months. His clinical

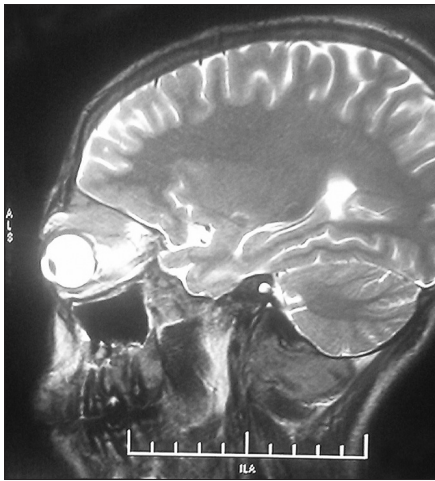


Figure 1: Eye balls pushed in CT orbit



Figure 2: Lacrimal gland enlarged



Figure 3: Enlarged lacrimals pushing eyeballs

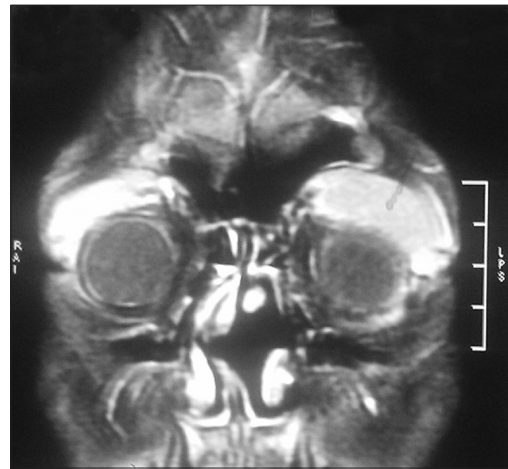


Figure 4: Eyeballs compressed supero laterally

examination revealed anemia and bilateral proptosis. CBC showed Hb 8 g/dl, TLC 18 k, DLC 80% myeloblasts, platelets 70 k. Computed tomography (CT) scan of the orbits revealed lacrimal gland enlargement pushing eyeballs medially and down [Figures 1-4]. The patient was shifted to medical oncology department on the same day.

The aim of highlighting this image is how varied can be the differential diagnosis in a patient presenting as proptosis.

Ajaz N. Koul, Muzaaffar M. Khujwal

*Department of Medicine, Sher-I-Kashmir Institute of Medical Sciences, Soura, Srinagar, India.
E-mail: ajazkoul@yahoo.com*

Access this article online

Quick Response Code:



Website:
www.ijmpo.org

DOI:
10.4103/0971-5851.113441