

Four rare extranodal sites seen on FDG PET/CT in a single patient of disseminated lymphoma

Ameya D. Puranik,
Archi Agrawal, Nilendu C.
Purandare, Sneha Shah,
Venkatesh Rangarajan

Department of Nuclear Medicine
and Molecular Imaging,
Tata Memorial Hospital, Parel,
Mumbai, Maharashtra, India

Address for correspondence:

Dr. Venkatesh Rangarajan,
Department of Nuclear Medicine
and Molecular Imaging, Tata
Memorial Hospital, Dr. E Borges
Marg, Parel, Mumbai - 400 012,
Maharashtra, India.
E-mail: drvrangarajan@gmail.com

ABSTRACT

Extranodal disease refers to lymphomatous infiltration of anatomic sites other than lymph nodes. With the advent of FDG PET/CT for staging, rare sites of extranodal disease have been documented. We report a case of Non-Hodgkin's lymphoma with four rare extranodal sites, namely adrenal, peripheral nerves, pancreas and prostate, in the same patient, detected on FDG PET/CT imaging.

Key words: *Extranodal, pancreas, peripheral nerves, prostate*

INTRODUCTION

FDG PET/CT is commonly used for staging and treatment response assessment in lymphomas, as it helps in picking up primary sites, nodes and extranodal sites in a single study. This also leads to uncovering of rare sites of lymphomatous involvement. Our case similarly shows four rare extranodal sites in a case of Non-Hodgkin's lymphoma on PET/CT.

CASE REPORT

A 25-year-old gentleman, on anti-retroviral treatment for immunopositivity for HIV, since two years, presented to our institution 4 months back, with history of unexplained fever, weight loss and bilateral axillary swellings. On examination he had palpable bilateral axillary nodes. Recent CD4 count was 550 cells/mm³. A biopsy from the left axillary node confirmed it to be Non-Hodgkin's lymphoma (NHL) B cell type. Patient was then referred for a baseline whole body 18-F Fluorodeoxyglucose Positron

Emission Tomography/Computed Tomography (FDG PET/CT) study. Maximum intensity projection (MIP) images [Figure 1a] revealed multiple foci of increased tracer uptake in bilateral cervical, axillary, mediastinal and retroperitoneal regions. In addition, there were foci of intense uptake on the left side of abdomen (arrow) and in the pelvis (arrow head), which appeared to be due to physiological tracer excretion into the urinary bladder. Axial fused PET/CT images revealed multiple enlarged FDG avid bilateral axillary and mediastinal nodes. In addition, FDG uptake was seen in enlarged bilateral adrenal glands, left being more than right [Figure 1b, arrows]. There was focal FDG uptake seen in the body of pancreas on axial-fused PET/CT images [Figure 1c, arrow]. FDG uptake in the retroperitoneal region corresponded on CT and fused PET/CT images to exiting nerve roots from lumbar vertebrae [Figure 2a and b, arrow]. Also, the FDG uptake in the pelvis which appeared to be excreted tracer in bladder, was in fact seen in the enlarged prostate gland on CT and fused PET/CT images [Figure 2c and d, arrow]. Patient received two cycles of intravenous bolus chemotherapy regimen, R-EPOCH (Rituximab with etoposide, vincristine, doxorubicin, cyclophosphamide, and prednisone) with methotrexate, after which he was referred for a FDG PET/CT study for treatment response assessment. Post-treatment FDG PET/CT study revealed no abnormal focus of FDG uptake in the entire body, suggestive of complete metabolic and morphological response to treatment [Figure 3, MIP image].

Access this article online

Quick Response Code:



Website:
www.ijmpo.org

DOI:
10.4103/0971-5851.116189

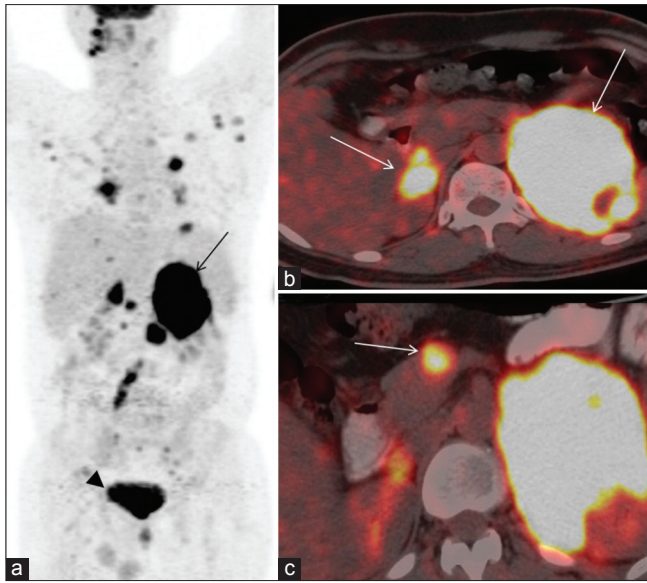


Figure 1: (a) MIP image showing abnormal tracer foci in abdomen (arrow) and pelvis (arrowhead) (b) Axial fused image showing intense tracer uptake in bilateral adrenal glands (arrows) (c) Axial fused image showing tracer uptake in body of pancreas (arrow)



Figure 3: Post-treatment MIP image showing no abnormal tracer uptake

DISCUSSION

Rare sites of extranodal involvement like skin, stomach, small intestine, kidney, bone, ovary, adrenal, peripheral nerves and prostate have been documented in the existing literature.^[1] Non-Hodgkin's lymphoma can involve adrenal in almost 25% of cases, either with nodal involvement or as primary adrenal lymphoma.^[2] Neurolymphomatosis (NL) is an uncommon syndrome of cranial or peripheral nerve root dysfunction secondary to infiltration by B cell Non-Hodgkin's lymphoma and is an extremely rare manifestation of lymphoma.^[3] Although CT and MRI have been used for detection and guiding biopsy in NL, recent reports have demonstrated the value of

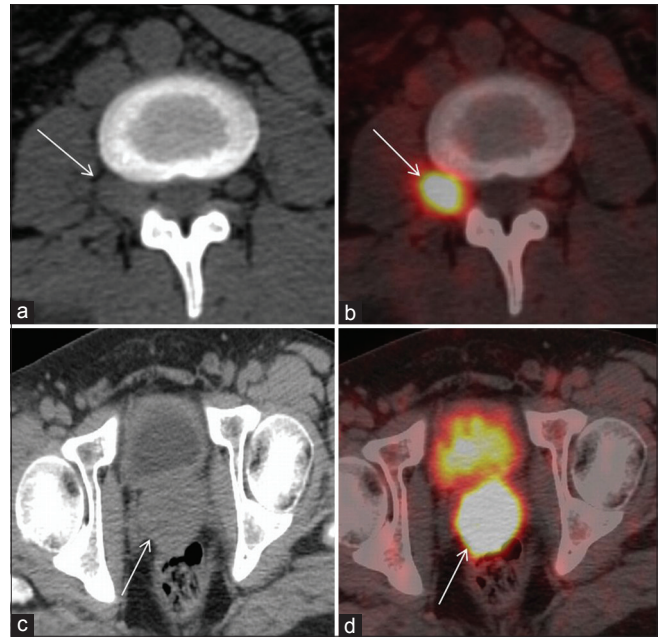


Figure 2: (a) Axial CT image showing enlarged exiting nerve root with loss of surrounding fat planes (arrow) (b) Axial fused image showing intense uptake in exiting nerve root (arrow) (c) Axial CT image showing enlarged prostate gland (arrow) (d) Axial fused image showing uptake in the prostate gland (arrow)

FDG PET/CT in NL.^[4,5] There has been only one case report showing involvement of lumbar plexus on FDG PET/CT,^[6] with this being the second one. Similarly, prostatic involvement is rarely encountered, with primary prostatic lymphomas representing approximately 0.2-0.8% of extranodal lymphomas, with urinary tract obstruction being the commonest presentation.^[7] Secondary pancreatic involvement has been reported in only 0.2-2% of patients with NHL, out of which only two cases had B cell lymphoma, ours being the third case.^[8] All the reports in literature give one rare site of extranodal involvement or a rare site of primary origin of lymphoma. There are no studies which document four rare extranodal sites in the same patient. Uncovering such rare sites in one single patient once again highlights the role of FDG PET/CT in staging of lymphomas. Lymphomas, both Hodgkins and Non-Hodgkins type, can have varied presentations and hence a whole body metabolic imaging with CT fusion is essential to pick up all the sites of lymphomatous involvement to design appropriate treatment regimens. Also, it serves as a baseline, which can be compared to the post-treatment study for assessing response, as in this case, wherein a post-treatment PET/CT study shows complete metabolic response to treatment.

REFERENCES

1. Paes FM, Kalkanis DG, Sideras PA, Serafini AN. FDG PET/CT in extranodal involvement of non Hodgkin's lymphoma and Hodgkin's disease. *Radiographics* 2010;30:269-91.

2. Kumar R, Xiu Y, Mavi A, El-Haddad G, Zhuang H, Alavi A. FDG-PET imaging in primary bilateral adrenal lymphoma: A case report and review of the literature. *Clin Nucl Med* 2005;30:222-30.
3. Baehring JM, Damek D, Martin EC, Betensky RA, Hochberg FH. Neurolymphomatosis. *Neuro Oncol* 2003;5:104-15.
4. Kanter P, Ziedman A, Streifler J, Marmelstein V, Even Sapir E, Mester U, *et al.* PET-CT imaging of combined brachial and lumbosacral neurolymphomatosis. *Eur J Haematol* 2005;74:66-9.
5. Trojan A, Jermann M, Taverna C, Hany TF. Fusion PET CT imaging of neurolyphomaosis. *Ann Oncol* 2002;13:802-5.
6. Strobel K, Pestalozzi B, Ciernik I, Schaefer NG, Koma AY, Hany TF. Changing PET/CT manifestation of neurolyphomatosis. *Eur J Nucl Med Mol Imaging* 2006;33:1244.
7. Patel DR, Gomez GA, Henderson ES, Gamarra M. Primary prostatic involvement in non Hodgkin lymphoma. *Urology* 1988;32:96-8.
8. Saif MW, Khubchandani S, Walczak M. Secondary pancreatic involvement by a diffuse large B-cell lymphoma presenting as acute pancreatitis. *World J Gastroenterol* 2007;13:4909-11.

How to cite this article: Puranik AD, Agrawal A, Purandare NC, Shah S, Rangarajan V. Four rare extranodal sites seen on FDG PET/CT in a single patient of disseminated lymphoma. *Indian J Med Paediatr Oncol* 2013;34:101-3.
Source of Support: Nil, **Conflict of Interest:** None declared.

Author Help: Online submission of the manuscripts

Articles can be submitted online from <http://www.journalonweb.com>. For online submission, the articles should be prepared in two files (first page file and article file). Images should be submitted separately.

- 1) **First Page File:**
Prepare the title page, covering letter, acknowledgement etc. using a word processor program. All information related to your identity should be included here. Use text/rtf/doc/pdf files. Do not zip the files.
- 2) **Article File:**
The main text of the article, beginning with the Abstract to References (including tables) should be in this file. Do not include any information (such as acknowledgement, your names in page headers etc.) in this file. Use text/rtf/doc/pdf files. Do not zip the files. Limit the file size to 1 MB. Do not incorporate images in the file. If file size is large, graphs can be submitted separately as images, without their being incorporated in the article file. This will reduce the size of the file.
- 3) **Images:**
Submit good quality color images. Each image should be less than 4096 kb (4 MB) in size. The size of the image can be reduced by decreasing the actual height and width of the images (keep up to about 6 inches and up to about 1800 x 1200 pixels). JPEG is the most suitable file format. The image quality should be good enough to judge the scientific value of the image. For the purpose of printing, always retain a good quality, high resolution image. This high resolution image should be sent to the editorial office at the time of sending a revised article.
- 4) **Legends:**
Legends for the figures/images should be included at the end of the article file.