

# Adenomatoid tumor of cervix: The first case report

A 32-year-old female presented with vague lower abdominal pain. Instant per speculum examination and pelvic ultrasound revealed a sessile polypoid mass projecting from the posterior cervical wall. No other clinico-radiologically distinguishable abdominopelvic pathology could be ratified. Polypectomy was performed soon after under regional anesthesia.

Grossly, the mass measured 2.3 cm × 2.2 cm × 2.2 cm. It was covered by glistening pearly white surface epithelium. Cut section exposed a well-defined, whitish, homogeneous mass. Its immaculate delineation from the surface was obvious, even at macroscopic inspection [Figure 1].

Microscopically, the neoplasm was well-circumscribed and separated from its surface by a rim of fibroconnective tissue. It exhibited an array of architectural patterns: Tubuloglandular structures, microcysts, and solid sheets with focal lymphocytic infiltrates. The flattened-to-cuboidal neoplastic cells featured fine nuclear chromatin, inconspicuous nucleoli, and abundant vacuolated cytoplasm [Figure 2A-C]. Nuclear pleomorphism or mitoses were absent. The overall histomorphology provisionally favored the diagnosis of “adenomatoid tumor” (AT), but differentials such as various endothelial/lipomatous neoplasms needed exclusion. The tumor cells expressed strong immunoreactivity for calretinin [Figure 2D]. Ultimately, it became the maiden case of cervical AT.

Owing to its extreme rarity, AT is a diagnosis of exclusion in the cervix. Comprehensive clinico-radiopathological evaluation aided by mesothelial immunohistochemistry satisfactorily estranges AT from its commoner cervical differentials.

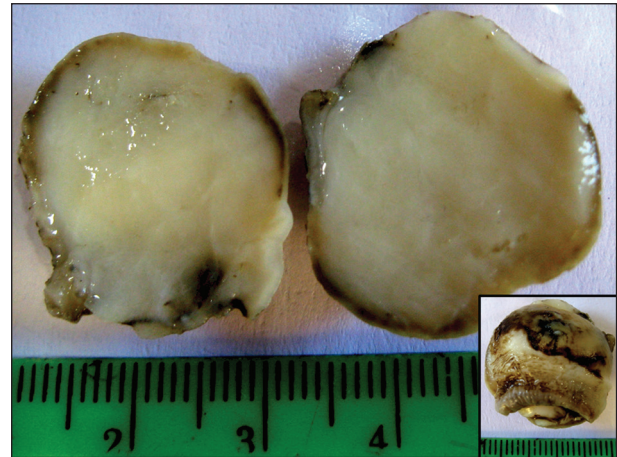
## Financial support and sponsorship

Nil.

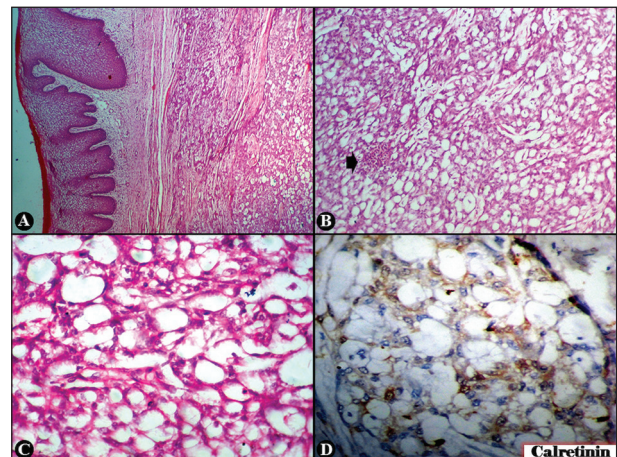
## Conflicts of interest

There are no conflicts of interest.

Tarak Banik, Krishnendu Mondal<sup>1</sup>,  
Rupali Mandal<sup>2</sup>



**Figure 1:** Adenomatoid tumor of cervix: Grossly, small globular mass with smooth glistening exterior surface (inset); cut surface is homogeneous, white and well-delineated from surface epithelium



**Figure 2:** Adenomatoid tumor of cervix: Well-circumscribed mass separated from mucosa by a rim of fibroconnective tissue (H and E, ×40) (a). Neoplastic cells in sheets, tubules, microcysts, with focal (arrow) lymphocytic infiltration (H and E, ×100) (b); contain fine nuclear chromatin, inconspicuous nucleoli, and abundant vacuolated cytoplasm (H and E, ×400) (c). Cells positive for calretinin (×400) (d)

Department of Pathology, Malda Medical College and Hospital,  
<sup>1</sup>Department of Pathology, Sonoscan Healthcare, <sup>2</sup>Department of Pathology, Dishari Healthpoint, Malda, West Bengal, India

## Address for correspondence:

Dr. Krishnendu Mondal,  
c/o Barendra Nath Mondal, Vill-Fularhat, P.O. and P.S. Sonarpur,  
South 24 Parganas - 700 150, West Bengal, India.  
E-mail: krishnendu.kriss@gmail.com

## Access this article online

### Quick Response Code:



Website:  
www.ijmpo.org

DOI:  
10.4103/0971-5851.177039

This is an open access article distributed under the terms of the Creative Commons Attribution-NonCommercial-ShareAlike 3.0 License, which allows others to remix, tweak, and build upon the work non-commercially, as long as the author is credited and the new creations are licensed under the identical terms.