

Magnetic Resonance Imaging Findings of Idiopathic Normal Pressure Hydrocephalus and Cognitive Function Before and After Ventriculoatrial Shunt

Abstract

Background: The idiopathic normal pressure hydrocephalus (iNPH) is characterized by the triad of gait impairment, incontinence, and dementia. Cases that do not comply with the diagnostic criteria of ventriculomegaly have increased. It has led to the questions about the current criteria of guidelines. As the number of patients with dementia increases with aging, iNPH is importantly placed as a treatable dementia. The purpose of this study was to verify the validity of radiological diagnostic criteria of ventriculomegaly in iNPH. **Materials and Methods:** A board-certified neuroradiologist retrospectively examined 80 patients with definite iNPH about magnetic resonance imaging (MRI) findings of Evans index (EI) and disproportionately enlarged subarachnoid space hydrocephalus (DESH). The score of mini-mental state examination (MMSE) was measured to represent the cognitive function. The presurgical score of MMSE (pre-MMSE) and postsurgical best score of MMSE (best-MMSE) were compared statistically between patients dichotomized by either EI >0.3 or DESH. **Results:** The pre-MMSE was not different regardless of dichotomization by EI >0.3 or DESH. The MMSE score (median) increased significantly ($P < 0.0001$) by shunt from 20.0 to 26.0 in patients with EI >0.3 and from 21.5 to 25.5 with EI \leq 0.3. No difference in the best-MMSE was observed between EI >0.3 and EI \leq 0.3. The MMSE score increased significantly ($P < 0.0001$) by shunt from 21 to 27.5 with DESH and from 20 to 24.5 with non-DESH. Regardless of fulfilling or notfulfilling Japanese radiological diagnostic criteria (combination of EI >0.3 and DESH), cognitive function was significantly ($P < 0.0001$) improved to the same level. Only 24 cases (30%) fulfilled Japanese radiological diagnostic criteria. **Conclusion:** Cognitive function of iNPH patients was significantly improved by shunt regardless of MRI-findings. Radiological diagnostic criteria of iNPH may need careful reconsideration.

Keywords: Cognitive function, idiopathic normal pressure hydrocephalus, mini-mental state examination, ventriculomegaly

Introduction

Idiopathic normal pressure hydrocephalus (iNPH) is a disease of the elderly population, comprising the triad of gait disturbance, dementia, and urinal incontinence that can be improved by shunting of cerebrospinal fluid (CSF).^[1] Beside the clinical trial, there are various opinions regarding the pathophysiology of iNPH. The most popular diagnosis of iNPH has been denoted on magnetic resonance imaging (MRI) findings of ventriculomegaly that is indicated by Evans index (EI) >0.3.^[2,3] In addition to EI, another morphological feature of disproportionately enlarged subarachnoid space hydrocephalus (DESH)^[4] has been

addressed in the Japanese diagnostic guideline.^[5] In our recent study, iNPH patients with EI \leq 0.3 was observed at 30% and with non-DESH at 55% of 84 definite iNPH patients.^[6] Similar results have been reported from other laboratories suspecting the reliability of DESH.^[7,8] Regarding EI, 29% of healthy elderly people have EI >0.3,^[9] and there is no clear basis for using EI >0.3 as an index of ventriculomegaly, and it is inconsistent. The cases have been also reported that the symptoms were improved by CSF shunting despite EI \leq 0.3.^[10] These reports have led to the questions about the validity of the current diagnostic criteria in the guidelines.

This is an open access journal, and articles are distributed under the terms of the Creative Commons Attribution-NonCommercial-ShareAlike 4.0 License, which allows others to remix, tweak, and build upon the work non-commercially, as long as appropriate credit is given and the new creations are licensed under the identical terms.

For reprints contact: WKHLRPMedknow_reprints@wolterskluwer.com

How to cite this article: Watahiki R, Onouchi K, Machida T, Natsume K, Takagi K. Magnetic resonance imaging findings of idiopathic normal pressure hydrocephalus and cognitive function before and after ventriculoatrial shunt. *Asian J Neurosurg* 2020;15:587-93.

Submitted: 21-May-2020 **Accepted:** 04-Jun-2020
Published: 28-Aug-2020

Ryota Watahiki^{1,2},
Kenji Onouchi³,
Toru Machida⁴,
Kiyohisa Natsume²,
Kiyoshi Takagi^{5,6}

¹Department of Rehabilitation, Tsukuba Medical Center Hospital, ²Department of Neurology, Tsukuba Hospital, Tsukuba, ³Department of Life Science and Systems Engineering, Kyushu Institute of Technology Graduate School, Kitakyushu, ⁴Department of Radiology, Sanno Hospital, ⁵Department of Mechanical and Biofunctional Systems, Institute of Industrial Science, The University of Tokyo, Tokyo, ⁶Normal Pressure Hydrocephalus Center, Nagareyama Central Hospital, Nagareyama, Japan

Address for correspondence:

Ryota Watahiki,
Department of Rehabilitation
Therapy, Tsukuba Medical
Center Hospital, 1-3-1,
Amakubo, Tsukuba, Japan.
E-mail: watahiki.r@gmail.com

Access this article online

Website: www.asianjns.org

DOI: 10.4103/ajns.AJNS_242_20

Quick Response Code:



As for ventriculomegaly in iNPH, no correlations were reported between the change of midbrain size and change of gait function,^[11] and some correlations were observed between corpus callosum size and cognitive function.^[12] However, little is known about the direct relationship between diagnostic ventriculomegaly and clinical symptoms of iNPH. Although gait disturbance is the most prominent symptom, cognitive impairment is also common at about 80% of iNPH patients.^[13] In contrast to gait improvement in a short term, recovery of cognitive function often requires a relatively long period of time. Since we can ask the *pros and cons* of the diagnostic criteria of ventriculomegaly over a long term, the significance of measuring cognitive function would be even greater. This could be the advantage of cognitive function to examine into iNPH patients.

In a modern society where the number of patients with dementia increases with aging, iNPH is importantly placed as a treatable dementia. The purpose of this study is to examine the effects of shunt surgery on the cognitive function of iNPH patients with and without diagnostic MRI findings of ventriculomegaly. Then, the goal is to verify the validity of the current diagnostic criteria of the neuroimaging features (EI >0.3 and DESH) on the evaluation of cognitive function of iNPH patients after shunt surgery.

Materials and Methods

Definite idiopathic normal pressure hydrocephalus patients

A total of 330 probable iNPH cases received ventriculoatrial shunt (VA shunt) at NPH Center of Kashiwatanaka hospital in the period of 2010 through 2014. All patients received lumbar tap test with positive response and were evaluated functionally by a neurologist and physical therapists before and after VA shunt by using the Modified Rankin Scale (mRS),^[14] Japanese iNPH Grading Scale (iNPHGS) for gait, continence, and cognitive function,^[15] mini-mental state examination (MMSE),^[16,17] and Three-meter timed up and go test (TUG).^[18] A patient was denoted as the shunt responder (definite iNPH) when he or she showed at least one of the following postsurgical improvements in mRS ≥ 1 , MMSE ≥ 3 , iNPHGS ≥ 1 , or cessation of urinary incontinence. Then, 288 cases (87%) proved to be definite iNPH, and 80 patients who had clear presurgical axial and coronal brain MRI scans were selected finally for this study on the detailed postsurgical evaluation that was conducted at the 1st, 3rd, 6th, and 12th months after VA shunt.

Cognitive function

Gait disturbance and urinary incontinence are easier to improve than cognitive impairment among the iNPH triad. Long-term observation is usually required to confirm postsurgical improvement of cognitive function. Cognitive function was measured by using the score of MMSE.^[16,17]

Since the prognostic timing varied from patient to patient and depended on the functional modality, the postsurgical best score of MMSE (best-MMSE) was used as representing the cognitive improvement by shunt.

Neuroimaging of ventriculomegaly

We verified the accuracy and usability of radiological criteria for iNPH diagnosis.^[2,5] Considering the interobserver variation in the assessment of EI and DESH,^[14] we adopted the measurement results of a board-certified neuroradiologist about the radiological features that were determined by blind to the clinical information. EI was computed using the axial section of MRI-T1 image^[1,3] which was modified from the original method.^[19] DESH was judged according to the original description of by Kitagaki *et al.*^[4] DESH was described as disproportionately enlarged subarachnoid space, tight high convexity, and enlarged Sylvian fissure [Figure 1]. Although we followed the Japanese guidelines^[5] barring the radiologic diagnostic criteria, patients with EI ≤ 0.3 and non-DESH were also included in the present study.

Statistical analysis

To analyze the effects of CSF shunting on patients, the paired Student's *t*-test was applied to the paired Student's *t*-test was applied to the parametric data (age, EI) and Wilcoxon matchedpairs signed rank test to the nonparametric data (mRS, iNPHGS, MMSE, and TUG). To analyze the validity of dichotomizing the patients by the radiological diagnostic criteria, the unpaired Student's *t*-test was applied to the parametric data (age, EI) and Mann-Whitney's Utest to the nonparametric data (MMSE, TUG). All statistical analyses were performed using Prism 8 (version 8.4.1; GraphPad Software LLC., San Diego, CA, USA).

All the measured data were shown as the median (the lower quartile and the upper quartile) throughout the text and tables, but for abstract as the median only. In the figures, data were shown by box plot (the minimum, the lower quartile, the median, the upper quartile, and the maximum).

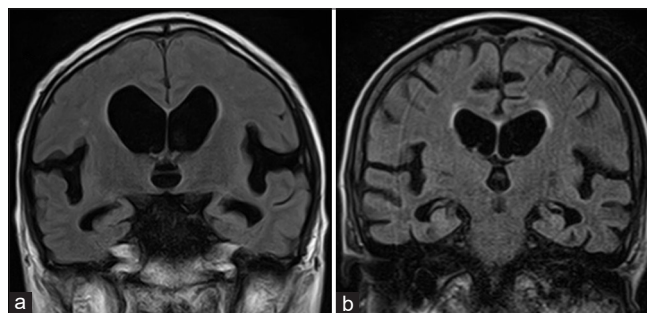


Figure 1: Magnetic resonance imaging in idiopathic normal pressure hydrocephalus patients with and without feature of disproportionately enlarged subarachnoid space hydrocephalus. The left image (a) shows characteristics of disproportionately enlarged subarachnoid space hydrocephalus as disproportionately enlarged subarachnoid space, tight high convexity, and dilatation of Sylvian fissure. The right image (b) shows non-disproportionately enlarged subarachnoid space hydrocephalus

Ethical considerations

Data collection was approved by the Institutional Review Board of Kasiwatanaka Hospital, and informed consent was obtained in a written form.

Results

Among 288 cases (87%) as proved to be definite iNPH, 80 patients (47 males and 33 females) who had clear presurgical axial and coronal brain MRI scans were selected for this cohort study. The age shown as the median (interquartile range) was 78.0 (75.5–82.0), whereas the age for males and females were 78.0 (75.0–82.0) and 79.0 (74.0–81.5), respectively. There was no gender difference in age of patient [Table 1].

Ventriculoatrial shunt and clinical functions

At first, we examined the effects of VA shunt on the clinical functions of iNPH patients. We noted that all modalities of clinical functions (mRS, iNPHGS (gait, continence, and cognitive function), MMSE, and TUG) were improved significantly by VA shunt [Table 2].

Evans index and cognitive function

We examined pre- and post-surgical cognitive function in relation to ventriculomegaly defined as EI >0.3. We verified the efficiency of the radiological diagnostic criterion of EI for improvement of iNPH patients by VA shunt [Table 3]. The age was not different in patients between with EI >0.3 and with EI ≤0.3. It is of note that 35% of 80 definite iNPH patients showed less than EI ≤0.3. The presurgical score of MMSE (pre-MMSE) of patients with EI >0.3 was not different from that with EI ≤0.3. The postsurgical best-MMSE of patients with EI >0.3 was not different from that with EI ≤0.3. Thus, both pre- and best-MMSE were not different in iNPH patients regardless of EI >0.3 or EI ≤0.3.

Then, as indicated in Figure 2, the score of MMSE was significantly ($P < 0.0001$) increased by VA shunt from 20.0 (17.0–25.8) to 26.0 (24.0–29.8) in patients with EI >0.3 and from 21.5 (18.0–27.8) to 25.5 (24.0–29.8) in patients with EI ≤0.3. These results suggest that dichotomizing the patients by EI may not have significant meanings in the evaluation of cognitive function of iNPH patients.

Disproportionately enlarged subarachnoid space hydrocephalus and cognitive function

As shown in Table 4, more than half (55%) of the iNPH patients were diagnosed with non-DESH. The pre-MMSE of patients with DESH was not different from that with non-DESH. In addition, EI of the patients with DESH was not different from that with non-DESH. The effects of VA shunt on the cognitive function of patients with DESH and that with non-DESH were shown in Figure 3. The score of MMSE was increased

Table 1: Demographic data of the 80 patients of idiopathic normal pressure hydrocephalus

	All (n=80)	Male (n=47)	Female (n=33)
Patient age (years)	78.0 (75.5-82.0)	78.0 (75.0-82.0)	79.0 (74.0-81.5)

No significant gender difference in age ($P=0.97$). Data are shown by the median (interquartile range)

Table 2: Effects of shunt surgery on the improvement of clinical functions of idiopathic normal pressure hydrocephalus

	Presurgery	Postsurgery	P
mRS	2 (2-3)	1 (0-2)	<0.0001
iNPHGS	6 (5-10)	2.5 (1-4)	<0.0001
iNPHGS (Gait)	2 (2-3)	1 (0-2)	<0.0001
iNPHGS (Cont)	2 (1-3)	0 (0-0)	<0.0001
iNPHGS (Cog)	2 (1-3)	1 (0-2)	<0.0001
MMSE	20 (17-26)	26 (24-29.75)	<0.0001
TUG (n=58)	19.7 (14.6-32.3)	15.4 (11.9-22.2)	<0.000001

Data are shown by the median (interquartile range). mRS – Modified Rankin Scale; iNPHGS – Japanese Grading Scale for iNPH scoring 0 (best) to 12 (worst); iNPHGS (Gait) – Gait of iNPHGS scoring 0 (best) to 4 (worst); iNPHGS (Cont) – Urinary continence of iNPHGS scoring 0 (best) to 4 (worst); iNPHGS (Cog) – Cognitive function of iNPHGS scoring 0 (best) to 4 (worst); MMSE – Mini-Mental State Examination; TUG – Three-meter timed up and Go test (sec)

Table 3: Ventriculomegaly defined by Evans index >0.3 and cognitive functions of idiopathic normal pressure hydrocephalus patients before and after shunt surgery

	EI >0.3	EI ≤0.3	P
Number of patients	52	28	
Patient age (years)	78.0 (74.3-82.8)	78.5 (75.0-81.0)	0.857
EI	0.336 (0.320-0.354)	0.290 (0.276-0.295)	<0.0001
Pre-MMSE	20.0 (17.0-25.8)	21.5 (18.0-27.8)	0.255
Best-MMSE	26.0 (24.0-29.8)	25.5 (24.0-29.8)	0.914

Data are shown by the median (interquartile range). iNPH – Idiopathic normal pressure hydrocephalus; EI – Evans index; Pre-MMSE – Presurgical score of mini-mental state examination, Best-MMSE – Postsurgical best score of minimal state examination

significantly ($P < 0.0001$) by shunt surgery from 21 (18–26.8) to 27.5 (25–30) in patients with DESH and from 20 (16–25) to 24.5 (22.3–29) in patients with non-DESH. Although DESH or non-DESH did not influence the pre-MMSE and EI, the best-MMSE of patients with DESH was significantly higher ($P < 0.01$) than that with non-DESH [Table 4].

Japanese radiological criteria and cognitive function

Table 5 outlines the summary of patients with respect to those who fulfilled the Japanese radiologic diagnostic criteria (combination of EI >0.3 and DESH) and who

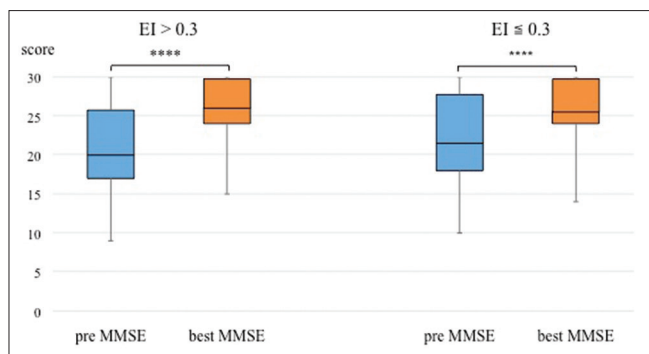


Figure 2: Cognitive function before and after shunt in idiopathic normal pressure hydrocephalus patients with or without ventriculomegaly: Evans index >0.3 or Evans index ≤0.3. In the figure, the left shows data of idiopathic normal pressure hydrocephalus patients with Evans index >0.3, whereas the right shows data of idiopathic normal pressure hydrocephalus patients with Evans index ≤0.3. Pre-MMSE indicates the pre-surgical score of mini-mental state examination, whereas best-MMSE indicates the postsurgical best score of mini-mental state examination. The box plot shows the minimum, the lower quartile, the median, the upper quartile, and the maximum. *****P* < 0.0001

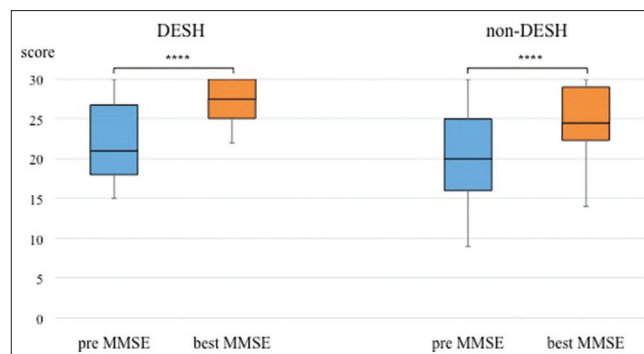


Figure 3: Cognitive function before and after shunt in patients with or without disproportionately enlarged subarachnoid space hydrocephalus (DESH). In the figure, the left shows data of idiopathic normal pressure hydrocephalus patients with DESH, whereas the right shows data of idiopathic normal pressure hydrocephalus patients without DESH. Pre-MMSE indicates the pre-surgical score of mini-mental state examination, while best-MMSE indicates the post-surgical best score of mini-mental state examination. The box plot shows the minimum, the lower quartile, the median, the upper quartile, and the maximum. *****P* < 0.0001

Table 4: Cognitive functions of idiopathic normal pressure hydrocephalus patients with or without disproportionately enlarged subarachnoid space hydrocephalus before and after shunt

	DESH	Non-DESH	<i>P</i>
Number of patients	36	44	
Patient age (years)	78 (74-81)	78.5 (76-83)	0.376
Evans index	0.319 (0.293-0.337)	0.324 (0.290-0.347)	0.259
Pre-MMSE	21 (18-26.8)	20 (16-25)	0.133
Best-MMSE	27.5 (25-30)	24.5 (22.3-29)	0.0054

Data are shown by the median (interquartile range). iNPH – Idiopathic normal pressure hydrocephalus; Pre-MMSE – Presurgical score of mini-mental state examination, Best-MMSE – Postsurgical best score of mini-mental state examination

did not. There were no significant differences in age, EI, pre-MMSE, and best-MMSE between the group of fulfilling Japanese radiological criteria and the group of not-fulfilling the criteria. Only 24 cases (30% of the 80 definite iNPH patients) fulfilled the Japanese radiological diagnostic criteria.

As shown in Figure 4, the score of MMSE was significantly increased (*P* < 0.0001) by VA shunt from 20.5 (18–25.8) to 27 (25–30) in the patients fulfilling the Japanese radiological diagnostic criteria. Similarly, in the patients not-fulfilling Japanese radiological criteria, the score of MMSE was also significantly increased (*P* < 0.0001) from 20 (17–26.8) to 25 (23–29) by shunt surgery. Regardless of fulfilling or not-fulfilling the Japanese radiological diagnostic criteria (combination of EI >0.3 and DESH), cognitive function of iNPH patients was significantly improved to the same level by VA shunt.

Discussion

We demonstrated that all modalities of physiological functions (gait, cognitive function, and urinary continence) associated with iNPH improved significantly by VA shunt. We investigated whether the MRI-based current criteria of ventriculomegaly really capture the pathophysiology of iNPH by focusing on the diagnosis and prognosis of cognitive function. No significant differences were observed in the pre-MMSE nor best-MMSE between the patients with EI >0.3 and those with EI ≤0.3. In addition, the score of MMSE improved significantly by VA shunt in both groups of EI >0.3 and EI ≤0.3. Thus, the current diagnostic criterion of ventriculomegaly by EI may not seem reasonable for defining iNPH patients.

Since the introduction of the concept of NPH as a cause of surgically treatable dementia by Adams *et al.*,^[20] a number of CSF shunt surgeries for iNPH were performed with undesirable outcomes.^[21-23] Klinge *et al.*^[24] and Ishikawa *et al.*^[3] summarized the outcomes and complications of shunt surgery for iNPH performed before the introduction of the guidelines. Although the outcomes were good in some studies, overall outcome was not satisfactory to recommend shunt to elderly patients. They developed the guidelines for iNPH and select candidates for shunt using clinical data and neuroimaging features.^[25] The core parts of the guidelines included radiological diagnosis to define ventriculomegaly since the concept of NPH was proposed as an analogy to pediatric hydrocephalus.^[20,26] This may be the reason why EI was included into the guidelines for iNPH,^[2,3] although EI was originally proposed to define ventriculomegaly of pediatric hydrocephalus.^[19]

Before the publication of the guideline, a number of studies were carried out on the outcome of CSF shunt surgery for iNPH.^[4,24] Since the definition of ventriculomegaly for

Table 5: Cognitive function of idiopathic normal pressure hydrocephalus patients dichotomized by fulfilling or not-fulfilling Japanese radiological diagnostic criteria

	Fulfilling Japanese radiological criteria	Not-fulfilling Japanese radiological criteria	P
Number of patients	24	56	
Patient age (years)	78 (74.25-81.5)	79 (75-82.8)	0.522
Evans index	0.328 (0.319-0.342)	0.303 (0.289-0.340)	0.076
Pre-MMSE	20.5 (18-25.8)	20 (17-26.8)	0.784
Best-MMSE	27 (25-30)	25 (23-29)	0.0924

DESH – Disproportionately enlarged subarachnoid space hydrocephalus; EI – Evans index; iNPH – Idiopathic normal pressure hydrocephalus; Fulfilling Japanese radiological criteria – Combination of EI > 0.3 and DESH; Not-fulfilling Japanese radiological criteria – This includes three groups of EI > 0.3 and non-DESH, EI ≤ 0.3 and DESH, EI ≤ 0.3 and non-DESH. Pre-MMSE – Presurgical score of mini-mental state examination, Best-MMSE – Post-surgical best score of mini-mental state examination

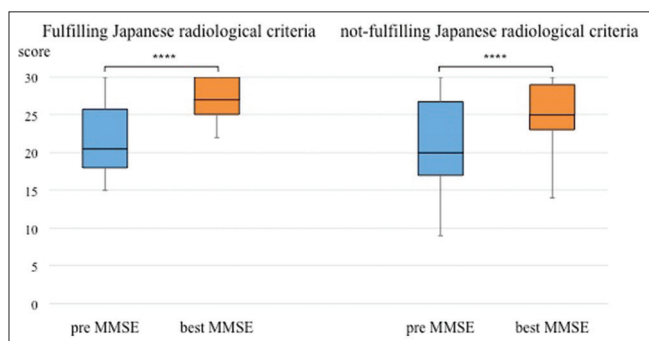


Figure 4: Cognitive function of idiopathic normal pressure hydrocephalus patients dichotomized by fulfilling or not-fulfilling Japanese radiological diagnostic criteria. The left indicates for fulfilling the Japanese radiological diagnostic criteria (combination of Evans index > 0.3 and disproportionately enlarged subarachnoid space hydrocephalus). The right indicates for not-fulfilling the diagnostic criteria. Pre-MMSE indicates pre-surgical score of mini-mental state examination. Best-MMSE indicates post-surgical best score of mini-mental state examination. The box plot shows the minimum, the lower quartile, the median, the upper quartile, and the maximum. **P < 0.0001**

iNPH was not clearly stated in the pre-era of the guidelines, previous studies might have contained shunt-responsive patients with EI ≤ 0.3. However, no studies compared the shunt outcomes between patients with EI > 0.3 and with EI ≤ 0.3. After the introduction of guidelines, only the patients who fulfilled the radiological diagnostic criteria have been selected for shunt surgery.^[7,8,13,27-32] It has been difficult to verify the validity of EI > 0.3 as the radiological diagnostic criteria for iNPH. Naruse and Matsuoka reported the symptoms of all the 14 patients improved remarkably by shunt despite EI ≤ 0.3.^[10] They suggested EI might not be appropriate to evaluate external ventricular enlargement because cerebral ventricles could not enlarge externally.^[10] In the present study, the pre- and post-surgical cognitive functions were not different each other between groups of EI > 0.3 and EI ≤ 0.3.

DESH is a different approach to define ventriculomegaly to discriminate iNPH from other causes of dementia such as Alzheimer disease and vascular dementia by the unique configuration of the CSF distribution in iNPH on the coronal section of MRI.^[4] In our study, only 36 cases (45%) were with DESH among the finally

selected definite iNPH patients. There were no significant differences in age, EI, and pre-MMSE between the patients with DESH and those with non-DESH. However, the best-MMSE of patients with DESH was significantly higher ($P < 0.005$) than that with non-DESH, whereas the best-MMSE was not different each other regardless of fulfilling Japanese radiological criteria (combination of EI > 0.3 and DESH) or not-fulfilling the criteria. Other recent reports support our findings about the low reliability of DESH for iNPH diagnosis.^[7,8] It may be due to the non-objective and non-quantitative definitional explanation for DESH. Nevertheless, the revised Japanese guideline^[5] includes DESH as a radiological diagnostic criterion along with EI > 0.3. DESH might have some meanings, though details remain unknown. Further studies may be needed to clarify the pathophysiological reality of DESH.

To the best of our knowledge, this is the first large-scaled study on the longitudinal recovering process of cognitive function in the definite iNPH patients who were not selected by the presence or absence of diagnostic ventriculomegaly. Only 30% of definite iNPH patients fulfilled the Japanese radiological diagnostic criteria (combination of EI > 0.3 and DESH); however, all of the patients showed significant improvement after shunt. After all, what is the diagnostic meaning of MRI-based ventriculomegaly in iNPH patients? Results of this study strongly suggest that currently proposed radiological diagnostic criteria of iNPH may need careful reconsideration to establish the most appropriate guideline.

Limitations of the study

This was a retrospective study and the analyzed patients were only from neurosurgical department of a single hospital. Evaluating cognitive function using the score of MMSE is a sensitive and useful way to examine retrospectively the effects of shunt surgery. Gait disturbance is one of the major symptoms of iNPH but can be a cause of tumble ensuing limb fractures in the elderly people. These patients may not be listed in the differential diagnosis of iNPH as they usually consult orthopedists.

Conclusion

There were no significant differences in the pre-MMSE between the two groups dichotomized by diagnostic criteria of EI >0.3 or DESH. The MMSE score was increased significantly by VA shunt to the same level regardless of dichotomization by EI >0.3 or DESH. Only 24 cases (30% of the 80 definite iNPH patients) fulfilled the Japanese radiological diagnostic criteria (combination of EI >0.3 and DESH). Regardless of fulfilling or not-fulfilling the Japanese radiological criteria, cognitive function of iNPH patients was significantly improved by VA shunt and reached to the same level. Dichotomizing patients by MRI-findings may cloud appropriate pathophysiological judge on the diagnosis of iNPH.

Financial support and sponsorship

Nil.

Conflicts of interest

There are no conflicts of interest.

References

- Williams MA, Malm J. Diagnosis and treatment of idiopathic normal pressure hydrocephalus. *Continuum (Minneapolis)* 2016;22:579-99.
- Relkin N, Marmarou A, Klinge P, Bergsneider M, Black PM. Diagnosing idiopathic normal-pressure hydrocephalus. *Neurosurgery* 2005;57 Suppl: S4-16.
- Ishikawa M, Hashimoto M, Kuwana N, Mori E, Miyake H, Wachi A, *et al.* Guidelines for management of idiopathic normal pressure hydrocephalus. *Neurol Med Chir (Tokyo)* 2008;48 Suppl: S1-23.
- Kitagaki H, Mori E, Ishii K, Yamaji S, Hirono N, Imamura T. CSF spaces in idiopathic normal pressure hydrocephalus: Morphology and volumetry. *AJNR Am J Neuroradiol* 1998;19:1277-84.
- Mori E, Ishikawa M, Kato T, Kazui H, Miyake H, Miyajima M, *et al.* Guidelines for management of idiopathic normal pressure hydrocephalus: Second edition. *Neurol Med Chir (Tokyo)* 2012;52:775-809.
- Takagi K, Watahiki R, Machida T, Onouchi K, Kato K, Oshima M. Reliability and interobserver variability of Evans' index and disproportionately enlarged subarachnoid space hydrocephalus as diagnostic criteria for idiopathic normal pressure hydrocephalus. *Asian J Neurosurg* 2020;15:107-12.
- Craven CL, Toma AK, Mostafa T, Patel N, Watkins LD. The predictive value of DESH for shunt responsiveness in idiopathic normal pressure hydrocephalus. *J Clin Neurosci* 2016;34:294-8.
- Agerskov S, Wallin M, Hellström P, Ziegelitz D, Wikkelsö C, Tullberg M. Absence of disproportionately enlarged subarachnoid space hydrocephalus, a sharp callosal angle, or other morphologic MRI markers should not be used to exclude patients with idiopathic normal pressure hydrocephalus from shunt surgery. *AJNR Am J Neuroradiol* 2019;40:74-9.
- Brix MK, Westman E, Simmons A, Ringstad GA, Eide PK, Wagner-Larsen K, *et al.* The Evans' Index revisited: New cut-off levels for use in radiological assessment of ventricular enlargement in the elderly. *Eur J Radiol* 2017;95:28-32.
- Naruse H, Matsuoka Y. Post-operative improvement of 14 cases who were considered iNPH despite Evans' index of 0.3 or less. *No Shinkei Geka* 2013;41:25-30.
- Hiraoka K, Yamasaki H, Takagi M, Saito M, Nishio Y, Iizuka O, *et al.* Is the midbrain involved in the manifestation of gait disturbance in idiopathic normal-pressure hydrocephalus? *J Neurol* 2011;258:820-5.
- Mataró M, Matarín M, Poca MA, Pueyo R, Sahuquillo J, Barrios M, *et al.* Functional and magnetic resonance imaging correlates of corpus callosum in normal pressure hydrocephalus before and after shunting. *J Neurol Neurosurg Psychiatry* 2007;78:395-8.
- Hashimoto M, Ishikawa M, Mori E, Kuwana N, Study of INPH on neurological improvement (SINPHONI). Diagnosis of idiopathic normal pressure hydrocephalus is supported by MRI-based scheme: A prospective cohort study. *Cerebrospinal Fluid Res* 2010;7:18.
- van Swieten JC, Koudstaal PJ, Visser MC, Schouten HJ, van Gijn J. Interobserver agreement for the assessment of handicap in stroke patients. *Stroke* 1988;19:604-7.
- Kubo Y, Kazui H, Yoshida T, Kito Y, Kimura N, Tokunaga H, *et al.* Validation of grading scale for evaluating symptoms of idiopathic normal-pressure hydrocephalus. *Dement Geriatr Cogn Disord* 2008;25:37-45.
- Folstein MF, Folstein SE, McHugh PR. "Mini-mental state". A practical method for grading the cognitive state of patients for the clinician. *J Psychiatr Res* 1975;12:189-98.
- Mori E, Mitani Y, Yamadori A. Usefulness of a Japanese version of the Mini-Mental State test in neurological patients. *Japanese J Neuropsychol* 1985;1:82-90.
- Mathias S, Nayak US, Isaacs B. Balance in elderly patients: The "get-up and go" test. *Arch Phys Med Rehabil* 1986;67:387-9.
- Evans WA. An encephalographic ratio for estimating ventricular and cerebral atrophy. *Arch Neur Psych* 1942;47:931-7.
- Adams RD, Fisher CM, Hakim S, Ojemann RG, Sweet WH. Symptomatic occult hydrocephalus with "normal" cerebrospinal-fluid pressure. A treatable syndrome. *N Engl J Med* 1965;273:117-26.
- Stein SC, Langfitt TW. Normal-pressure hydrocephalus. Predicting the results of cerebrospinal fluid shunting. *J Neurosurg* 1974;41:463-70.
- Black PM. Idiopathic normal-pressure hydrocephalus. Results of shunting in 62 patients. *J Neurosurg* 1980;52:371-7.
- Vanneste J, Augustijn P, Dirven C, Tan WF, Goedhart ZD. Shunting normal-pressure hydrocephalus: Do the benefits outweigh the risks? A multicenter study and literature review. *Neurology* 1992;42:54-9.
- Klinge P, Marmarou A, Bergsneider M, Relkin N, Black PM. Outcome of shunting in idiopathic normal-pressure hydrocephalus and the value of outcome assessment in shunted patients. *Neurosurgery* 2005;57:S40-52.
- INPH Guideline Study Group. Guidelines for the diagnosis and management of idiopathic normal-pressure hydrocephalus. *Neurosurgery* 2005;57 Suppl 3:S2-52.
- Hakim S, Adams RD. The special clinical problem of symptomatic hydrocephalus with normal cerebrospinal fluid pressure. Observations on cerebrospinal fluid hydrodynamics. *J Neurol Sci* 1965;2:307-27.
- Klinge P, Hellström P, Tans J, Wikkelsö C; European iNPH Multicentre Study Group. One-year outcome in the European multicentre study on iNPH. *Acta Neurol Scand* 2012;126:145-53.
- Kazui H, Miyajima M, Mori E, Ishikawa M; SINPHONI-2 Investigators. Lumboperitoneal shunt surgery for idiopathic normal pressure hydrocephalus (SINPHONI-2): An open-label randomised trial. *Lancet Neurol* 2015;14:585-94.

29. Lemcke J, Stengel D, Stockhammer F, Güthoff C, Rohde V, Meier U. Nationwide incidence of normal pressure hydrocephalus (NPH) assessed by insurance claim data in Germany. *Open Neurol J* 2016;10:15-24.
30. Kuriyama N, Miyajima M, Nakajima M, Kurosawa M, Fukushima W, Watanabe Y, *et al.* Nationwide hospital-based survey of idiopathic normal pressure hydrocephalus in Japan: Epidemiological and clinical characteristics. *Brain Behav* 2017;7:e00635.
31. Yamada S, Ishikawa M, Miyajima M, Nakajima M, Atsuchi M, Kimura T, *et al.* Timed up and go test at tap test and shunt surgery in idiopathic normal pressure hydrocephalus. *Neurol Clin Pract* 2017;7:98-108.
32. Akiba C, Gyanwali B, Villaraza S, Nakajima M, Miyajima M, Cheng CY, *et al.* The prevalence and clinical associations of disproportionately enlarged subarachnoid space hydrocephalus (DESH), an imaging feature of idiopathic normal pressure hydrocephalus in community and memory clinic based Singaporean cohorts. *J Neurol Sci* 2020;408:116510.