

A Dry Pineapple Slice Like Lesion in the Anterior Skull Base

Sir,

We read with much great interest the article of Salunke *et al.*^[1] Bone formation in meningiomas can be scattered, focal (eccentric or centrally). The latter is the case in our patient, a 50-year-old male who was referred for magnetic resonance imaging (MRI) from the temporal bone because of daily head pressure and tinnitus. MRI showed an incidental high-density lesion with central calcification and moderate perilesional edema at the right border of the lesion, most probably a planum sphenoidale meningioma [Figure 1].

Surgical resection revealed a lesion with central calcification/ossification, firmly attached to the olfactory

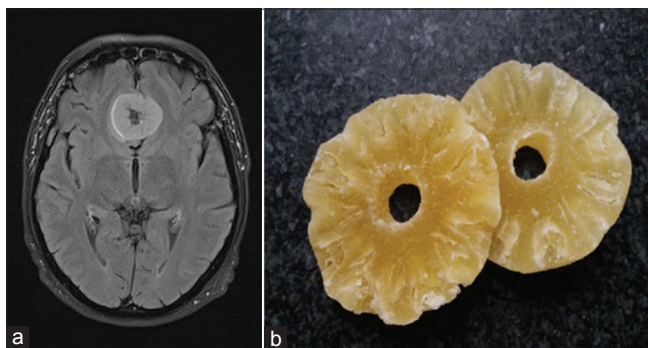


Figure 1: (a) Hyperintense (T2 - magnetic resonance imaging) lesion, with a diameter of 36 mm, with a hypointense center (T2 - magnetic resonance imaging), suggesting central calcification/ossification. (b) Dried pineapple slices resembling the meningioma pattern

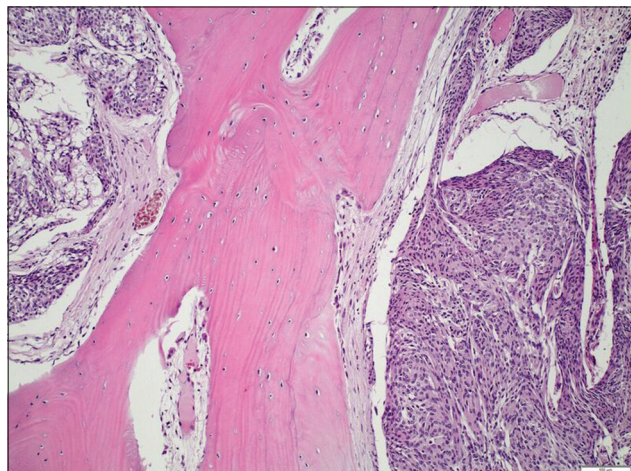


Figure 2: Mainly meningotheial meningioma but the presence of psammoma bodies, bone spicules, and osteoblasts suggests the metaplastic bone formation in the tumor (H and E, $\times 10$)

nerves. Histopathology disclosed a meningotheial meningioma [Figure 2].

The lesion resembled a dry pineapple slice with crenelated central margin due to the central ossification in contrast with osteoblastic meningiomas with diffuse ossification with chicken-wire pattern or with eccentric ossification with turtle-shell pattern.^[1,2]

Financial support and sponsorship

Nil.

Conflicts of interest

There are no conflicts of interest.

**Harald De Cauwer, Anniek Eerdekenes,
Filip Stessels¹, Dieter Vanneste²,
Gert De Mulder³**

Departments of Neurology, ¹Pathology, ²Neuroradiology and ³Neurosurgery, Dimpna Regional Hospital, 2440 Gheel, Belgium

Address for correspondence:

Dr. Harald De Cauwer,

Department of Neurosurgery, Dimpna Regional Hospital,
JB Stessenstraat 2, 2440 Gheel, Belgium.

E-mail: harald.decauwer@ziekenhuisgeel.be

References

- Salunke P, Aggarwal A, Futane S, Nada R, Gochhait D. Osteoblastic meningioma with turtle shell: Different entity from calcified meningioma. *Asian J Neurosurg* 2016;11:450.
- Huang J, Petersson F. Intracerebral metaplastic meningioma with prominent ossification and extensive calcification. *Rare Tumors* 2011;3:e20.

This is an open access journal, and articles are distributed under the terms of the Creative Commons Attribution-NonCommercial-ShareAlike 4.0 License, which allows others to remix, tweak, and build upon the work non-commercially, as long as appropriate credit is given and the new creations are licensed under the identical terms.

Access this article online

Quick Response Code:



Website:

www.asianjns.org

DOI:

10.4103/ajns.AJNS_367_16

How to cite this article: De Cauwer H, Eerdekenes A, Stessels F, Vanneste D, De Mulder G. A dry pineapple slice like lesion in the anterior skull base. *Asian J Neurosurg* 2019;14:1051.

© 2019 Asian Journal of Neurosurgery | Published by Wolters Kluwer - Medknow