

Case Report

Diffuse bone marrow uptake related to granulocyte colony-stimulating factor-producing maxillary sinus carcinoma on 4-borono-2-¹⁸F-fluoro-L-phenylalanine positron emission tomography/computed tomography

ABSTRACT

Granulocyte colony-stimulating factor (G-CSF) can be produced by tumor cells and is known to promote tumor growth, thereby potentially accelerating disease progression. Squamous cell carcinoma (SCC) at maxillary sinus is aggressive growth with poor prognosis. Maxillary sinus carcinomas are rare and can be clinically silent in the early stages or manifest with the same signs and symptoms of more common illnesses, leading to their delayed diagnosis of disease. Hypermetabolic uptake of ¹⁸F-fluorodeoxyglucose (¹⁸F-FDG) but not of 4-borono-2-¹⁸F-fluoro-L-phenylalanine (¹⁸F-FBPA), in the bone marrow of patients with G-CSF-producing tumors without bone marrow involvement during positron emission tomography (PET), has been reported. The present case report describes our first experience of bone marrow uptake in PET/computed tomography examination using ¹⁸F-FBPA, high uptake seen in the bone marrow of a patient with a G-CSF-secreting SCC of the maxillary sinus that it relapsed following chemoradiation therapy and surgical resection of the tumor.

Keywords: ¹⁸F-4-borono-2-¹⁸F-fluoro-*l*-phenylalanine, bone marrow uptake, GSF, maxillary squamous carcinoma

INTRODUCTION

Granulocyte colony-stimulating factor (G-CSF) is a growth factor and causes tumor cells to proliferate.^[1-4] In the squamous cell carcinoma (SCC) of the maxillary sinus, G-CSF secretion by tumor cells can thus worsen the prognosis of an aggressive tumor.^[3,4] Here, we report a case of a 70-year-old female with relapsed G-CSF-secreting SCC of the maxillary sinus after chemoradiation therapy (CRT). The increase in blood G-CSF levels in this patient reflected the degree of disease progression. It also corresponded to the degree of diffuse bone marrow uptake of 4-borono-2-¹⁸F-fluoro-L-phenylalanine (¹⁸F-FBPA) as well as of ¹⁸F-fluorodeoxyglucose (¹⁸F-FDG) in the positron emission tomography/computed tomography (PET/CT) scans. The degree of uptake of ¹⁸F-FBPA in the bone marrow is usually minimal in patients with non-G-CSF-secreting tumors that have not metastasized to the bone; hence, this occurrence is rare.

KHARISMA PERDANI KUSUMAHSTUTI^{1,2}, TADASHI WATABE^{1,3}, NAOYA KITAMURA⁴, TETSUYA YAMAMOTO⁴

¹Department of Nuclear Medicine and Tracer Kinetics, Graduate School of Medicine, Osaka University, Osaka, Japan,

²Department of Nuclear Medicine and Molecular Imaging, Universitas Padjadjaran, General Hasan Sadikin Hospital, Bandung, Indonesia, ³Institute for Radiation Sciences, Osaka University, Suita, Osaka, ⁴Department of Oral and Maxillofacial Surgery, Kochi Medical School, Kochi University, Nangoku, Kochi, Japan

Address for correspondence: Dr. Tadashi Watabe, Department of Nuclear Medicine and Tracer Kinetics, Graduate School of Medicine, Osaka University, 2-2 Yamadaoka, Suita, Osaka 565-0871, Japan.
E-mail: watabe@tracer.med.osaka-u.ac.jp

Submitted: 08-Jun-2020, **Revised:** 21-Jul-2020,

Accepted: 13-Aug-2020, **Published:** 23-Oct-2020

This is an open access journal, and articles are distributed under the terms of the Creative Commons Attribution-NonCommercial-ShareAlike 4.0 License, which allows others to remix, tweak, and build upon the work non-commercially, as long as appropriate credit is given and the new creations are licensed under the identical terms.

For reprints contact: WKHLRPMedknow_reprints@wolterskluwer.com

How to cite this article: Kusumahstuti KP, Watabe T, Kitamura N, Yamamoto T. Diffuse bone marrow uptake related to granulocyte colony-stimulating factor-producing maxillary sinus carcinoma on 4-borono-2-¹⁸F-fluoro-L-phenylalanine positron emission tomography/computed tomography. *World J Nucl Med* 2021;20:188-91.

Access this article online**Website:**

www.wjnm.org

DOI:

10.4103/wjnm.WJNM_80_20

Quick Response Code

CASE REPORT

A 70-year-old female, spuriously diagnosed with maxillary sinusitis, underwent CT, which showed maxillary osteomyelitis and a mass projecting into her right maxillary sinus and right nasal cavity. Two months later, she underwent surgery with resection of a solid tumor at the maxillary antrum, later revealed to be a G-CSF-producing SCC (Stage IVA, T4N0M0). Two weeks after surgery, there was a considerable increase in diffuse bone marrow uptake of ¹⁸F-FDG in the ¹⁸F-FDG PET-CT scan despite lack of bone marrow involvement as evidenced by the bone marrow biopsy [Figure 1a and b]. In addition, there was a marked increase in the white blood cell count (WBC) from 50.1×10^3 cells/ μ L to 106.3×10^3 cells/ μ L; blood G-CSF from 757 pg/m L to 2290 pg/m L; and alkaline phosphatase (ALP) from 655 pg/mL to 2339 pg/m L, 1 month following the surgery. Subsequently, the patient was given postoperative CRT, which consisted of superselective

intra-arterial chemotherapy (cisplatin [CDDP] 130 mg, 5 times) and radiation therapy (total 60 Gy). During CRT, the WBC, G-CSF, and ALP levels gradually decreased to 64.1×10^3 cells/ μ L, 1330 pg/m L, and 1571 U/L, respectively.

Six months after CRT, the patient's G-CSF levels, ALP levels, and WBC count increased to 875 pg/m L, 673 U/L, and 45.5×10^3 cells/ μ L, respectively, suggesting recurrence. This was confirmed with an ¹⁸F-FDG PET scan, which showed a hypermetabolic area at the former operation site. In addition, the ¹⁸F-FDG PET scan showed a mild diffuse bone marrow uptake of ¹⁸F-FDG [Figure 1c and d]. ¹⁸F-FBPA PET/CT taken 8 months after CRT for pretreatment evaluation for boron neutron capture therapy (BNCT) showed a similar uptake pattern of ¹⁸F-FBPA in the former operation site but a diffuse intense uptake of ¹⁸F-FBPA in the bone marrow. This increased bone marrow uptake of ¹⁸F-FBPA occurred in the absence of bone marrow metastases. The uptake of ¹⁸F-FBPA seen in the bone marrow could be attributed to the increased levels of G-CSF, which also caused an increase in WBCs [Figure 2].

¹⁸F-FBPA-PET study was performed with the approval of the Ethics Committee of Osaka University Hospital. Written informed consent was obtained from the patient.

DISCUSSION

This report presents a patient with a G-CSF-producing squamous carcinoma in the maxillary sinus showing diffuse bone marrow uptake of ¹⁸F-FBPA on the ¹⁸F-FBPA PET scan. This uptake of ¹⁸F-FBPA in the bone marrow in the absence of bone marrow metastases is rare because ¹⁸F-FBPA is highly

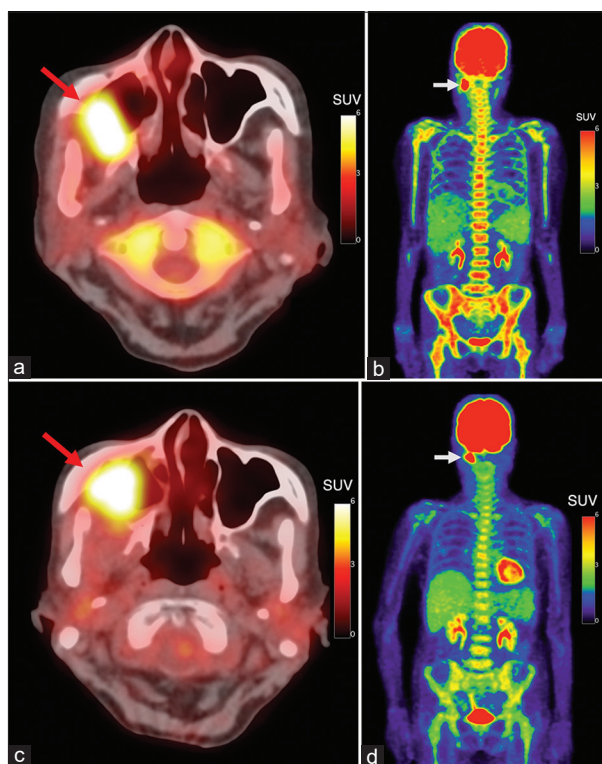


Figure 1: (a) Axial positron emission tomography/computed tomography fusion and (b) maximum intensity projection images of ¹⁸F-fluorodeoxyglucose positron emission tomography immediately after surgery. Increased uptake was seen in the residual tumor located in the maxillary sinus (arrows) and diffuse bone marrow uptake was observed, suggesting a granulocyte colony-stimulating factor-producing tumor. (c) Axial positron emission tomography/computed tomography fusion and (d) maximum intensity projection images of ¹⁸F-fluorodeoxyglucose positron emission tomography 6 months after the completion of postoperative chemoradiation therapy when the recurrence was suspected. High uptake was observed in the recurrent tumor in the same place as the operated site (red arrow). Mild diffuse bone marrow uptake can be seen in addition to the uptake in the recurrent tumor (white arrow)

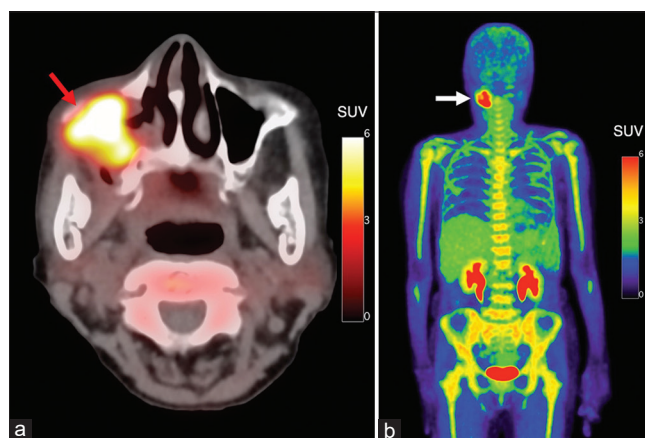


Figure 2: 4-borono-2-¹⁸F-fluoro-/-phenylalanine positron emission tomography/computed tomography images before BNCT for tumor recurrence. (a) Axial positron emission tomography/computed tomography fusion image shows increased 4-borono-2-¹⁸F-fluoro-/-phenylalanine uptake of the tumor in the location of the right maxillary sinus (arrow), (b) maximum intensity projection image reveals diffuse bone marrow uptake as well as uptake in the tumor (arrow)

specific to metastatic cancer cells since it is a substrate of L-type amino acid transporter 1 (LAT1).^[1-4] Since the uptake of ¹⁸F-FBPA in inflamed and reactive tissue is minimal, we usually do not see false-positive uptakes in the bone marrow. It is not necessary to perform bone marrow biopsy in a case with diffuse bone marrow uptakes with increased G-CSF level. We can differentiate it from metastasis, which usually showed focal or heterogeneous uptakes.

Maxillary sinus carcinomas are rare and can be clinically silent in the early stages.^[5-7] At the time of diagnosis, 70%–80% of maxillary sinus carcinomas are already at the T3 or T4 stages with local tumor extension.^[5] The overall mortality rate of these tumors is 65.5%, and the overall 1-, 2-, and 5-year survival rate is 57.9%, 44.8%, and 17.7%, respectively.^[8,9] This patient was initially diagnosed with maxillary sinusitis.

G-CSF-producing cells are rarely associated with head-and-neck carcinomas. Asano *et al.* reported the first case of a G-CSF-producing tumor and proposed the following criteria for diagnosing G-CSF-producing tumors: (1) leukocytosis with neutrophil predominance; (2) elevated serum and urine G-CSF levels; (3) normalization of WBC count and serum G-CSF level after removal of the tumor; and (4) increased G-CSF in tumor tissues.^[8,9] The gold standard to diagnose of G-CSF-producing tumor in this case was the laboratory finding. It showed elevated WBC and G-CSF levels, which were accompanied by normalization after the CRT and increase at the recurrence.

Glioblastoma, melanoma, and head-and-neck tumors can be treated successfully with BNCT. Here, a ¹⁰B-tagged tumor-seeking compound administered to patients accumulates in the tumors. A beam of thermal neutrons directed at the tumor causes nuclear capture of neutrons by boron, leading to nuclear fission. The tumors get irradiated by the reaction of ¹⁰B (n,α) ⁷Li.^[10-12] Therapeutic efficacy to BNCT can be predicted by ¹⁸F-FBPA PET since the uptake pattern is similar to the ¹⁰B-tagged compounds administered during BNCT.^[13-15] This patient had thus undergone ¹⁸F-FBPA PET for pretreatment evaluation of BNCT, enabling us to make these observations.

Hypermetabolic bone marrow uptake of ¹⁸F-FDG can be caused by increased metabolic activity in bone marrow, which is evidenced by increased G-CSF and WBC levels. Depending on the red marrow activity, the uptake can vary from moderate to intense.^[16-18] In the present study, increased bone marrow uptake of ¹⁸F-FBPA was seen as well. G-CSF tumors can sometimes cause this to occur possibly through an amino acid transporter.^[19]

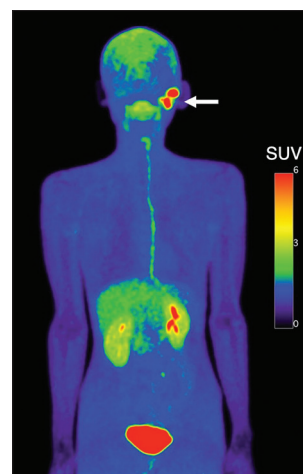


Figure 3: Maximum intensity projection image of 4-borono-2-¹⁸F-fluoro-L-phenylalanine positron emission tomography of a 30-year-old male with left parotid carcinoma (arrow) as a reference case of a patient with a tumor that does not produce granulocyte colony-stimulating factor. Note that no significant uptake was observed in the normal bone marrow on 4-borono-2-¹⁸F-fluoro-L-phenylalanine positron emission tomography

We performed FDG PET/CT before 1st CRT and 6 months after CRT. FBPA PET/CT was performed 2 months after the 2nd FDG PET/CT. Both FDG and FBPA showed diffuse bone marrow uptake and high uptake in the recurrent tumor. However, FBPA-PET showed increased uptakes in the bilateral humerus and femur compared to FDG-PET, suggesting progression during the interval between the two scans.

Tani *et al.* showed a significant correlation between ¹⁸F-BPA and ¹⁸F-FDG uptake in head-and-neck cancers.^[20] This was seen in our patient as well. Uptake of ¹⁸F-FBPA occurs through LAT1, which is present predominantly in malignant cells and is highly selective. ¹⁸F-FBPA usually shows minimal uptake in normal bone marrow [Figure 3]. However, in this patient, the ¹⁸F-FBPA PET scan showed homogeneous uptake of ¹⁸F-FBPA despite bone marrow biopsy ruling out bone marrow metastases. Thus, this case illustrates that a G-CSF-producing tumor should be considered if increased uptake of ¹⁸F-FBPA in the bone marrow is seen on the ¹⁸F-FBPA PET scan in the absence of bone marrow metastases.

Declaration of patient consent

The authors certify that they have obtained all appropriate patient consent forms. In the form the patient(s) has/have given his/her/their consent for his/her/their images and other clinical information to be reported in the journal. The patients understand that their names and initials will not be published and due efforts will be made to conceal their identity, but anonymity cannot be guaranteed.

Acknowledgment

We would like to thank all staff at Osaka University Hospital and NM Dept. Hasan Sadikin Hospital for kindly supports, especially Sadahiro Naka for the synthesis of ¹⁸F-FBPA, Takashi Kamiya and Hidetaka Sasaki for the PET acquisition.

Financial support and sponsorship

This study was funded by the QiSS program of the OPERA (Grant Number: JPMJOP1721) from the Japan Science and Technology Agency.

Conflicts of interest

There are no conflicts of interest.

REFERENCES

- Nagata H, Komatsu S, Takaki W, Okayama T, Sawabe Y, Ishii M, et al. Granulocyte colony-stimulating factor-producing hepatocellular carcinoma with abrupt changes. *World J Clin Oncol* 2016;7:380-6.
- Ito N, Matsuda T, Kakehi Y, Takeuchi E, Takahashi T, Yoshida O. Bladder cancer producing granulocyte colony-stimulating factor. *N Engl J Med* 1990;323:1709-10.
- Nara T, Hayakawa A, Ikeuchi A, Katoh N, Kishimoto S. Granulocyte colony-stimulating factor-producing cutaneous angiosarcoma with leukaemoid reaction arising on a burn scar. *Br J Dermatol* 2003;149:1273-5.
- Iwasa K, Noguchi M, Mori K, Ohta N, Miyazaki I, Nonomura A, et al. Anaplastic thyroid carcinoma producing the granulocyte colony stimulating factor (G-CSF): Report of a case. *Surg Today* 1995;25:158-60.
- Nishio N, Fujimoto Y, Hiramatsu M, Maruo T, Tsuzuki H, Mukoyama N, et al. Maxillary sinus carcinoma outcomes over 60 years: Experience at a single institution. *Nagoya J Med Sci* 2018;80:91-8.
- Santos MR, Servato JP, Cardoso SV, de Faria PR, Eisenberg AL, Dias FL, et al. Squamous cell carcinoma at maxillary sinus: Clinicopathologic data in a single Brazilian institution with review of literature. *Int J Clin Exp Pathol* 2014;7:8823-32.
- Fukuda K, Kojiro M, Hirano M, Hyams VJ, Heffner D. Predominance of squamous cell carcinoma and rarity of adenocarcinoma of maxillary sinus among Japanese. *Kurume Med J* 1989;36:1-6.
- Asano S, Urabe A, Okabe T, Sato N, Kondo Y, Ueyama Y, et al. Demonstration of granulopoiesis factor(s) in the plasma of nude mice transplanted with human lung cancer and in the tumor tissue. *Blood* 1977;49:845-52.
- Kuroshima T, Wada M, Takehiko S, Takano M, Sed M. G-CSF producing oral carcinoma with diffuse uptake of FDG in the bone marrow: A case report. *Oncol Lett* 2018;15:1241-5.
- Herrera MS, González SJ, Minsky DM, Kreiner AJ. Evaluation of performance of an accelerator-based BNCT facility for the treatment of different tumor targets. *Phys Med* 2013;29:436-46.
- Ishiwata K, Ido T, Kawamura M, Kubota K, Ichihashi M, Mishima Y. 4-Borono-2-[¹⁸F] fluoro-D, L-phenylalanine as a target compound for boron neutron capture therapy: Tumor imaging potential with positron emission tomography. *Int J Rad Appl Instrum B* 1991;18:745-51.
- Imahori Y, Ueda S, Ohmori Y, Sakae K, Kusuki T, Kobayashi T, et al. Positron emission tomography-based boron neutron capture therapy using boronophenylalanine for high-grade gliomas: Part I. *Clin Cancer Res* 1998;4:1825-32.
- Hanaoka K, Watabe T, Naka S, Kanai Y, Ikeda H, Genki H, et al. FBPA PET in boron neutron capture therapy for cancer: Prediction of 10B concentration in the tumor and normal tissue in a rat xenograft model. *EJNMMI Res* 2014;4:70.
- Shimosegawa E, Isohashi K, Naka S, Horitsugi G, Hatazawa J. Assessment of 10B concentration in boron neutron capture therapy; Potential of image-guided therapy using 18FBPA PET. *Ann Nucl Med* 2016;30:749-55.
- Watabe T, Hanaoka K, Naka S, Kanai Y, Ikeda H, Aoki M, et al. Practical calculation method to estimate the absolute boron concentration in tissues using ¹⁸F-FBPA PET. *Ann Nucl Med* 2017;31:481-5.
- Watabe T, Ikeda H, Nagamori S, Wiriyasermkul P, Tanaka Y, Naka S, et al. ¹⁸F-FBPA as a tumor-specific probe of L-type amino acid transporter 1 (LAT1): A comparison study with ¹⁸F-FDG and ¹¹C-Methionine PET. *Eur J Nucl Med Mol Imaging* 2017;44:321-31.
- Nakamoto Y, Suga T, Hara T, Ishizu K, Togashi K. Inhomogeneous bone marrow uptake caused by G-CSF mimics multiple bone metastases on FDG-PET. *Clin Nucl Med* 2010;35:74-6.
- Kazama T, Swanson N, Podoloff DA, Macapinlac HA. Effect of colony-stimulating factor and conventional-or high-dose chemotherapy on FDG uptake in bone marrow. *Eur J Nucl Med Mol Imaging* 2005;32:1406-11.
- Martín L, Comalada M, Martí L, Closs EI, MacLeod CL, Martín del Río R, et al. Granulocyte-macrophage colony-stimulating factor increases L-arginine transport through the induction of CAT2 in bone marrow-derived macrophages. *Am J Physiol Cell Physiol* 2006;290:C1364-72.
- Tani H, Kurihara H, Hiroi K, Honda N, Yoshimoto M, Kono Y, et al. Correlation of 18F-BPA and 18F-FDG uptake in head and neck cancers. *Radiother Oncol* 2014;113:193-7.